



WEST ELEVATION



SOUTH ELEVATION

**FINISH LEGEND**

- ◇ BRICK - GRAY
- ◇ FLUSH METAL PANEL - WHITE
- ◇ FINE REINFORCED CONCRETE PANELS - GRAY COLOUR, 3 TEXTURES
- ◇ EXPOSED CONCRETE - NATURAL FINISH
- ◇ ALUMINUM STOREFRONT, BLACK ANODIZED
- ◇ WOOD TRELLIS/STRUCTURE W/ GLASS ROOF
- ◇ PREFINISHED WINDOW SYSTEM, W/ CLEAR GLAZING
- ◇ POWDER COATED ALUM RAILING, MISC. METALS
- ◇ FINE REINFORCED CONCRETE PANELS - TERRACOTTA COLOUR, 3 TEXTURES
- ◇ PREFINISHED SLIDING PANEL, NATURAL COLOUR IN ALUMINUM TRACK
- ◇ ACCENT FLASHING
- ◇ DECORATIVE METAL PANEL

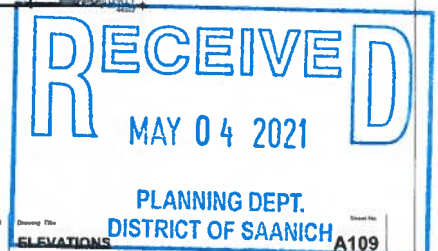
\* Refer to Material Schedule for info on exterior finishes.

CEDAR HILL ROAD



**Inter-Generational Housing Project - Luther Court Society**  
 1525 Cedar Hill Cross Road, 3781 & 3787 Cedar Hill Road, Victoria, BC

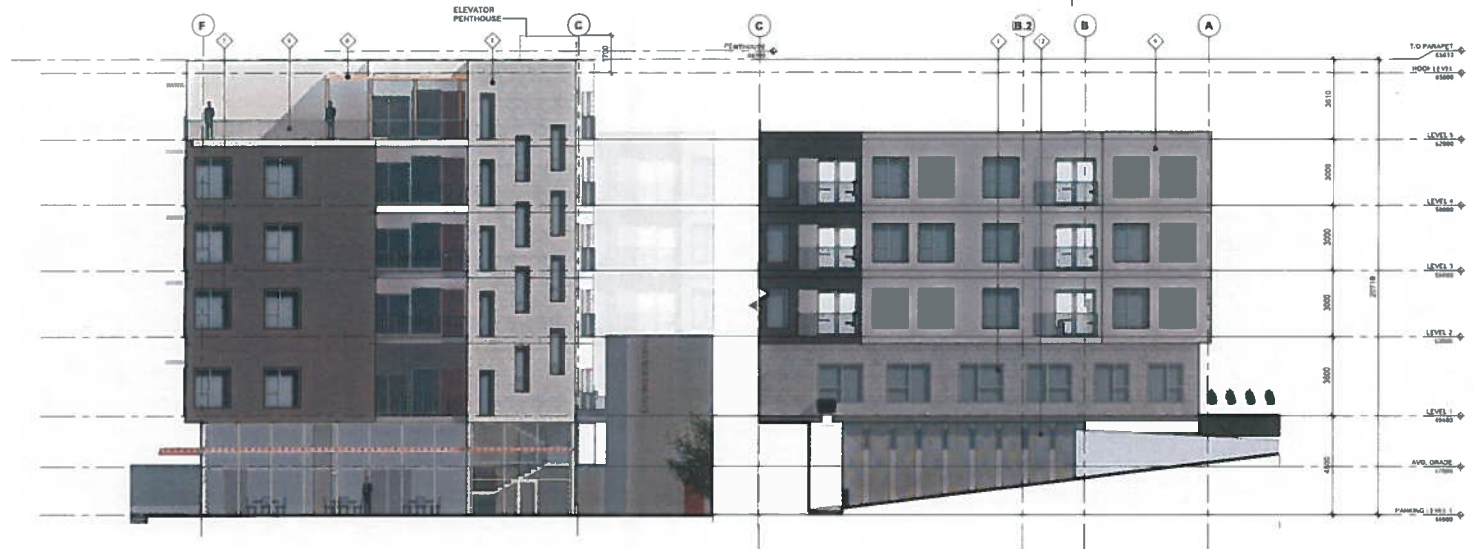
Scale: 1/8" = 1'-0" Date: April 26, 2021 Drawing Title: ELEVATIONS  
 Submitted for Development Permit Application





NORTH ELEVATION - A

NORTH ELEVATION - B



EAST ELEVATION - A

EAST ELEVATION - B

- FINISH LEGEND**
- ◇ BRICK - GRAY
  - ◇ FLUSH METAL PANEL - WHITE
  - ◇ FIBRE REINFORCED CONCRETE PANELS - GRAY COLOUR, 3 TEXTURES
  - ◇ EXPOSED CONCRETE - NATURAL FINISH
  - ◇ ALUMINUM STOREFRONT - BLACK ANODIZED
  - ◇ WOOD TRUSS/STRUCTURE W/ GLASS ROOF
  - ◇ PREFINISHED WINDOW SYSTEM W/ CLEAR GLAZING
  - ◇ POWDER COATED ALUM RAILING/ MISC. METALS
  - ◇ FIBRE REINFORCED CONCRETE PANELS - TERRACOTTA COLOUR, 3 TEXTURES
  - ◇ PREFINISHED SLIDING PANEL - NATURAL COLOUR BY ALUMINUM TRACK
  - ◇ ACCENT FLASHING
  - ◇ DECORATIVE METAL PANEL
- \* Refer to Materials Schedule for info on exterior finishes.



**Inter-Generational Housing Project - Luther Court Society**  
 1525 Cedar Hill Cross Road, 3781 & 3787 Cedar Hill Road, Victoria, BC

Scale: 1/8" = 1'-0" Date: April 21, 2021  
 Subject: Inter-Generational Housing Project Application

