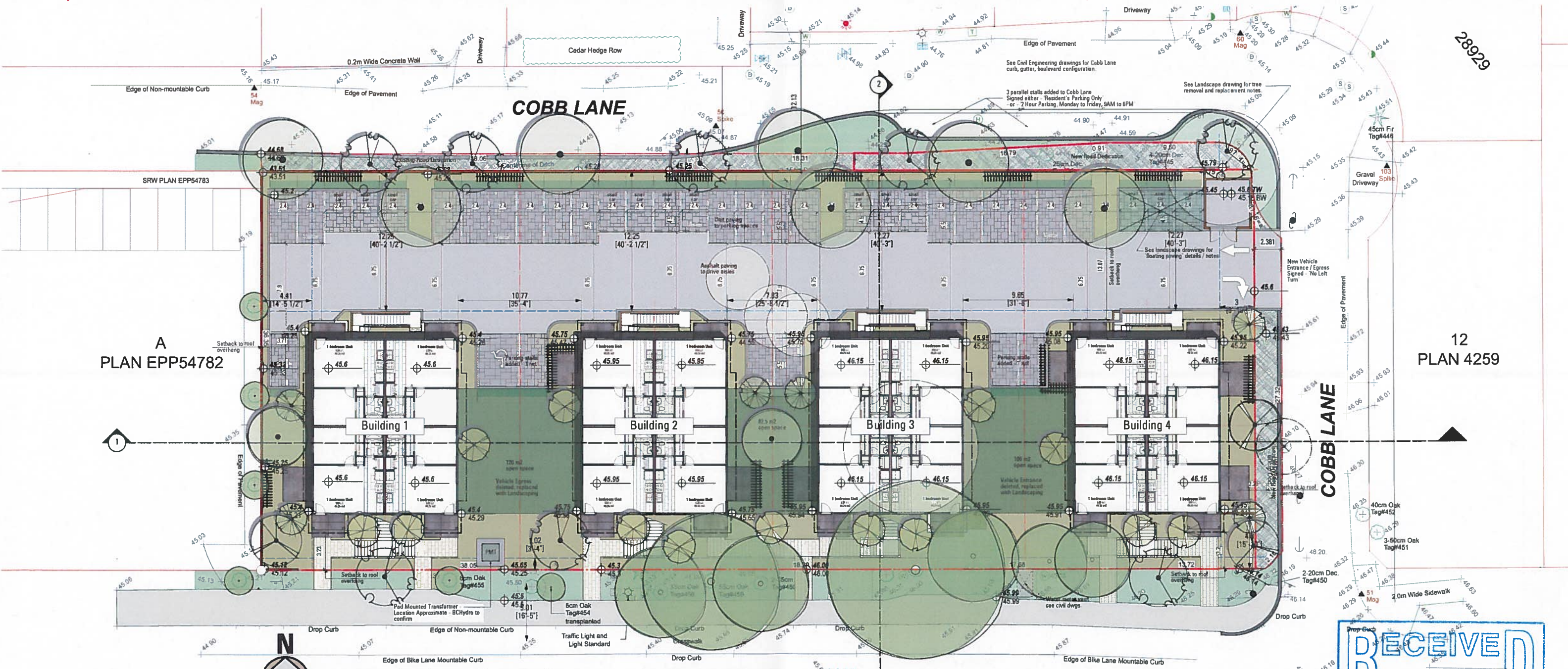




Cook Street Elevation
scale: 1 : 150



A
PLAN EPP54782

12
PLAN 4259



Site Plan
scale: 1 : 150

Site Survey information including Property Lines, Existing Features and Trees and Elevation Data, is taken from survey prepared by JE Anderson & Associates. File # 30559 - Dated August 2, 2017.

COOK STREET

RECEIVED
MAR 28 2019

PLANNING DEPT.
DISTRICT

A2 Joe Newell
architect inc.

December 19th, 2017
Rev. August 9th, 2018
Rev. November 21, 2018
Rev. December 14, 2018
Rev. March 27th, 2019

42 - 101 Presley Place, Victoria, BC V8B 0S4
P. (250) 382-4240, F. (250) 382-5733
www.joewellarchitect.com

3461, 3451, 3449, 3447
COOK STREET

PROPOSED MULTI-FAMILY RESIDENTIAL DEVELOPMENT