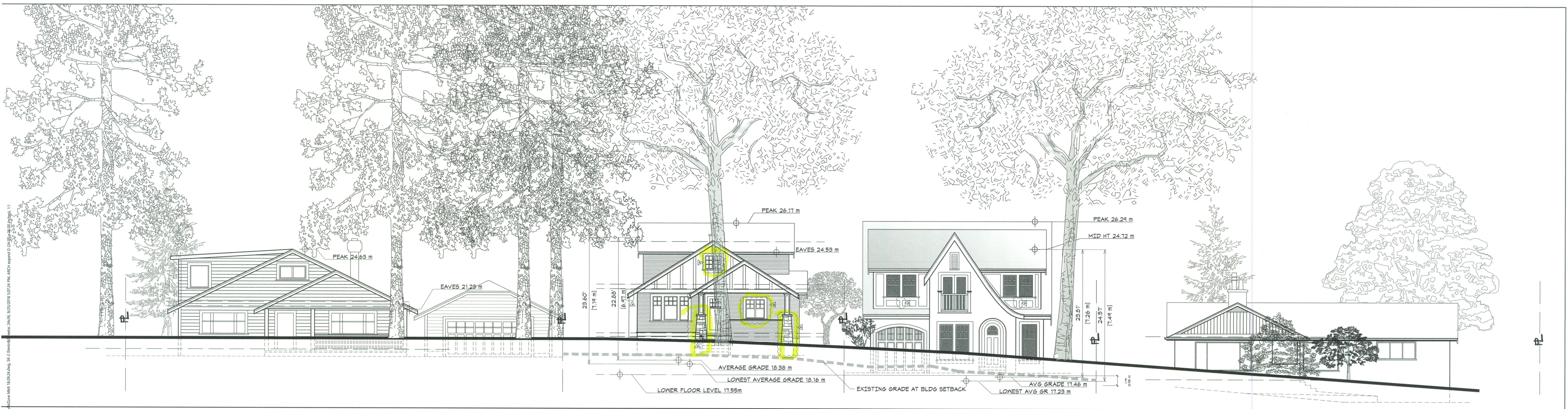
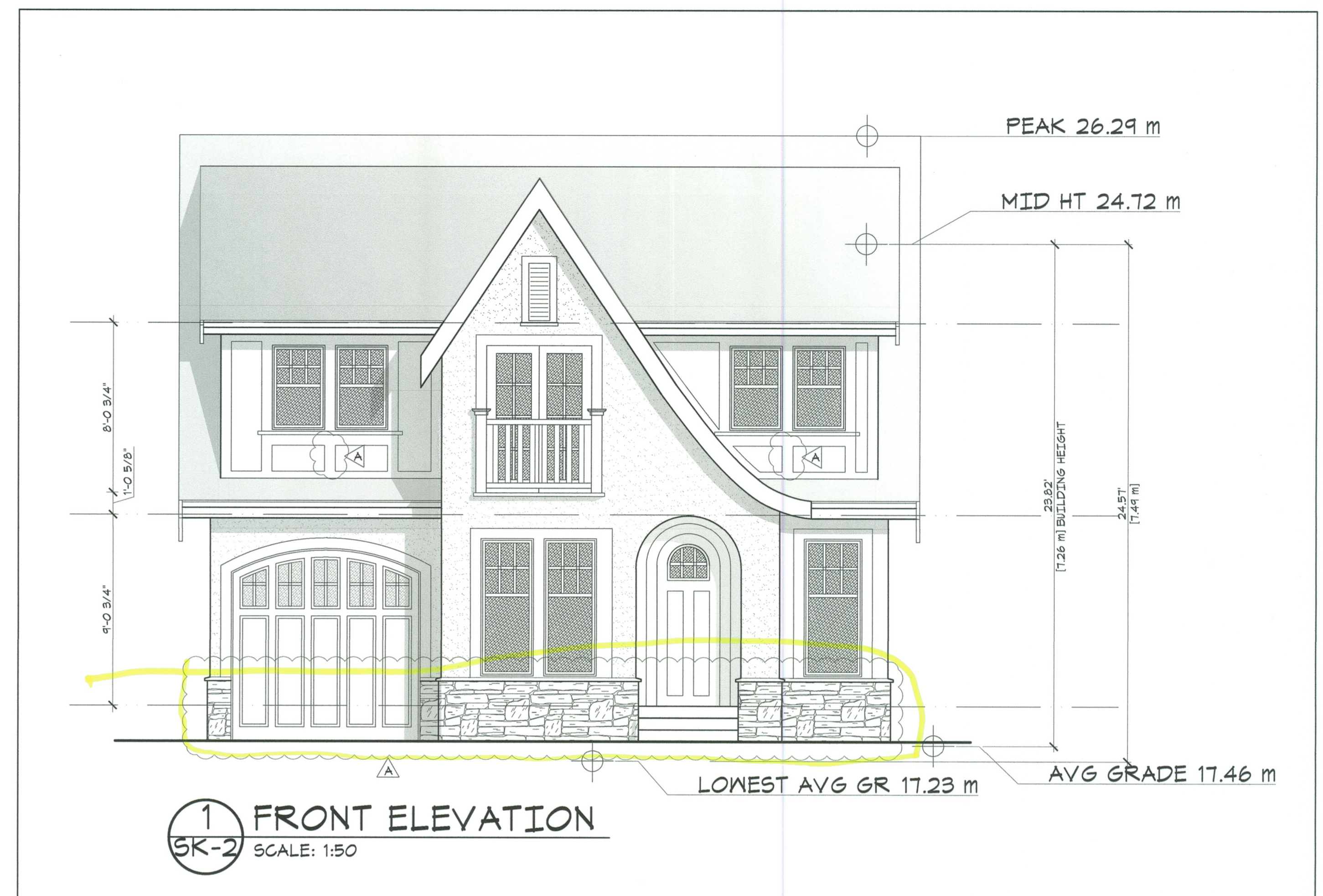


AVERAGE GRADE CALCULATIONS

	LOT 1	LOT 2
A	18.19	17.65
B	18.17	17.34
C	18.17	17.10
D	18.11	17.10
E	18.16	16.92
F	18.51	17.45
G	18.70	17.50
H	18.70	18.09
J	18.68	18.02
K	18.55	---
L	18.24	---
TOTAL	202.18	151.17
AVERAGE GRADE (TOTAL/4 OF PTS)	18.38	17.46

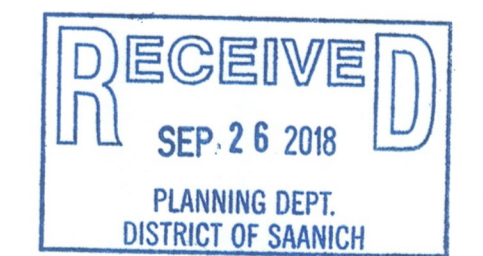
3 GRADE POINTS
SK-2 SCALE: 1:100



2 STREETSCAPE
SK-2 SCALE: 1:100

**ELEVATION & STREETSCAPE
RE-ZONING AND SUBDIVISION
3905 HOBBS ST.**

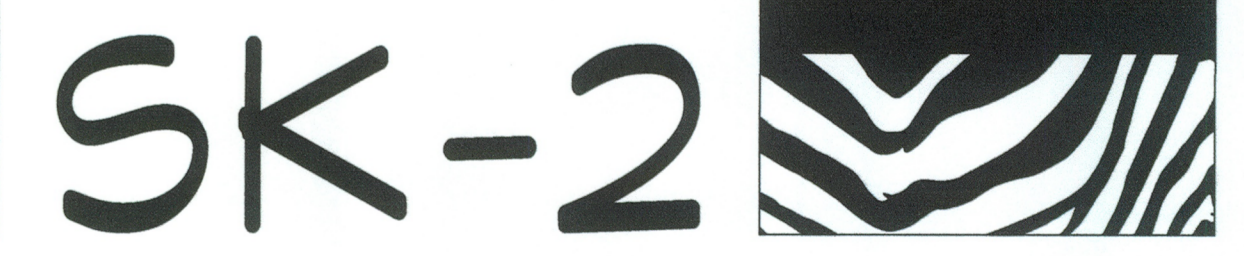
SAANICH, B.C. 05.15.18
SCALE = 1/8"=1'-0"



REVISIONS PER SAANICH COMMENTS 09.25.18

REVISIONS & ISSUES

REV.	DESCRIPTION	DATE
A	SUBDIVISION & REZONING APPLICATION	05.04.18
B	ADD MUNTIN BARS TO 2 WINDOWS ON EXIST. HOUSE, ADD STONE TO LOWER MAIN FLOOR FRONT OF SCHEMATIC ELEVATION	09.25.18



Z:\Project Files\3905 Hobbs St\3905 Hobbs St SK-2 Elevation.dwg, 09/25/2018, 10:24 AM, MCH, updated 09/25/2018 10:24 AM, 1:1