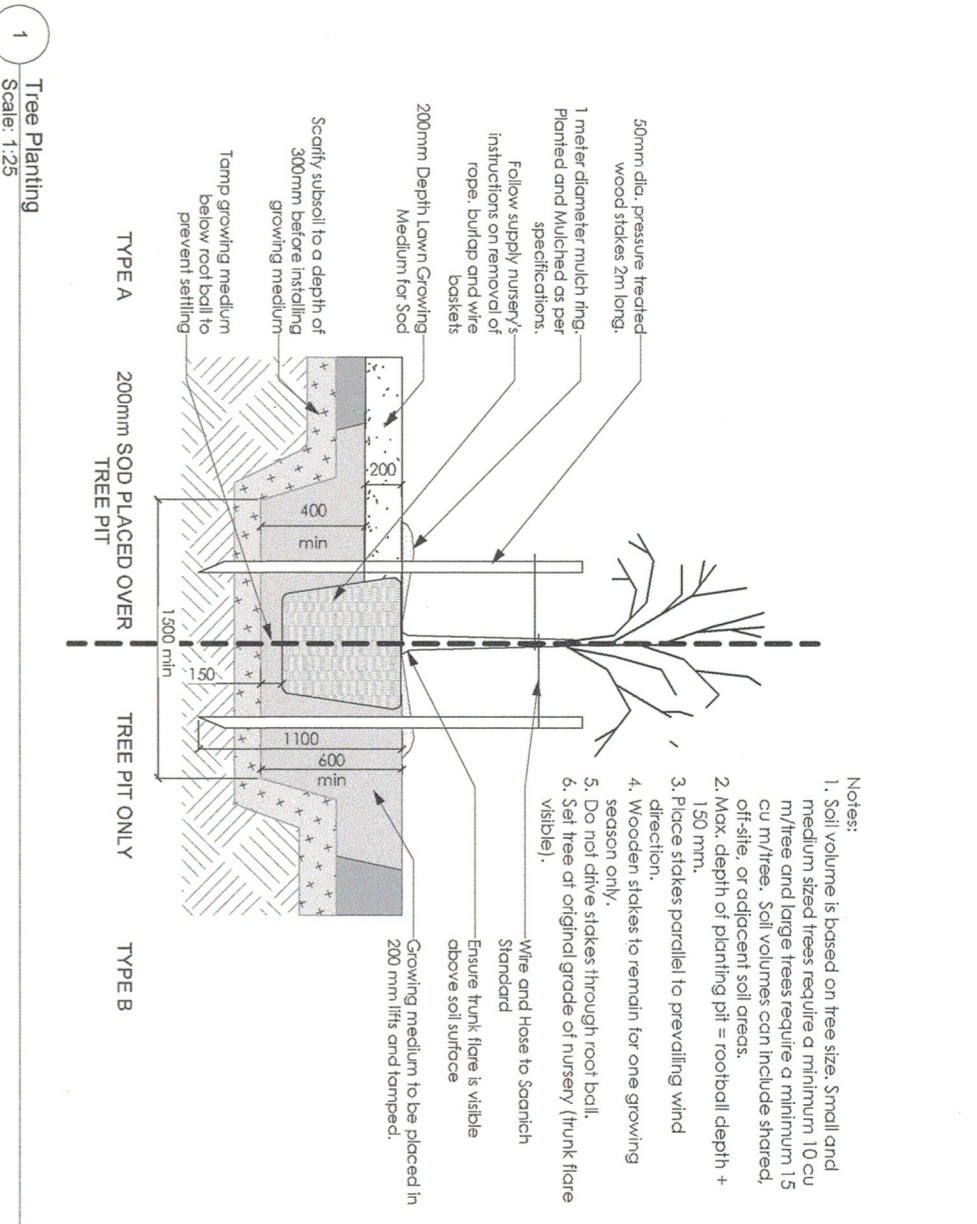


### EXISTING TREE INVENTORY\*

TREE TAG #	SPECIES	STATUS	QUANTITY
601, 602, 603, 604	Garry Oak	Bylaw Protected	4
<b>TOTAL TREES TO BE RETAINED: 4</b>			
TREE TAG #	SPECIES	STATUS	QUANTITY
605, 606, 607, 608, 609	Western Red Cedar	Bylaw Protected	11
611, 613, 614, 616, 626			
627	Decider cedar	Bylaw Protected	1
612	Australian pine	Bylaw Protected	1
615	London plane	Bylaw Protected	1
617	Douglas-fir	Bylaw Protected	1
618	Douglas-fir	Bylaw Protected	1
619, 620, 621, 622, 625	Big leaf maple	Bylaw Protected	7
635, 636			
623	Black cottonwood	Bylaw Protected	1
628, 629	Coast redwood	Bylaw Protected	2
630	Lambdya poplar	Bylaw Protected	1
631, 632, 633, 634	Douglas-fir	Bylaw Protected	4
<b>TOTAL BYLAW PROTECTED TREES TO BE REMOVED: 31</b>			
<b>TOTAL ESTIMATED UNPROTECTED TREE REMOVAL: 199</b>			
<b>TOTAL TREE REMOVAL: 230</b>			
* Based on Arborist's Report received from 1 Arborist dated June 28, 2016. Refer to Arborist report for details.			
<b>REPLACEMENT TREES</b>			
<b>TOTAL REPLACEMENT TREES REQUIRED AS PER BYLAW: 72</b>			
<b>TOTAL PROPOSED TREES TO BE PLANTED: 235</b>			
<b>NEW TREES (IN EXCESS OF REMOVAL): 23</b>			
Final selection of boulevard trees to be determined through consultation with Saanich parks staff. Tree species to vary but to include a minimum of 2x Garry Oaks			



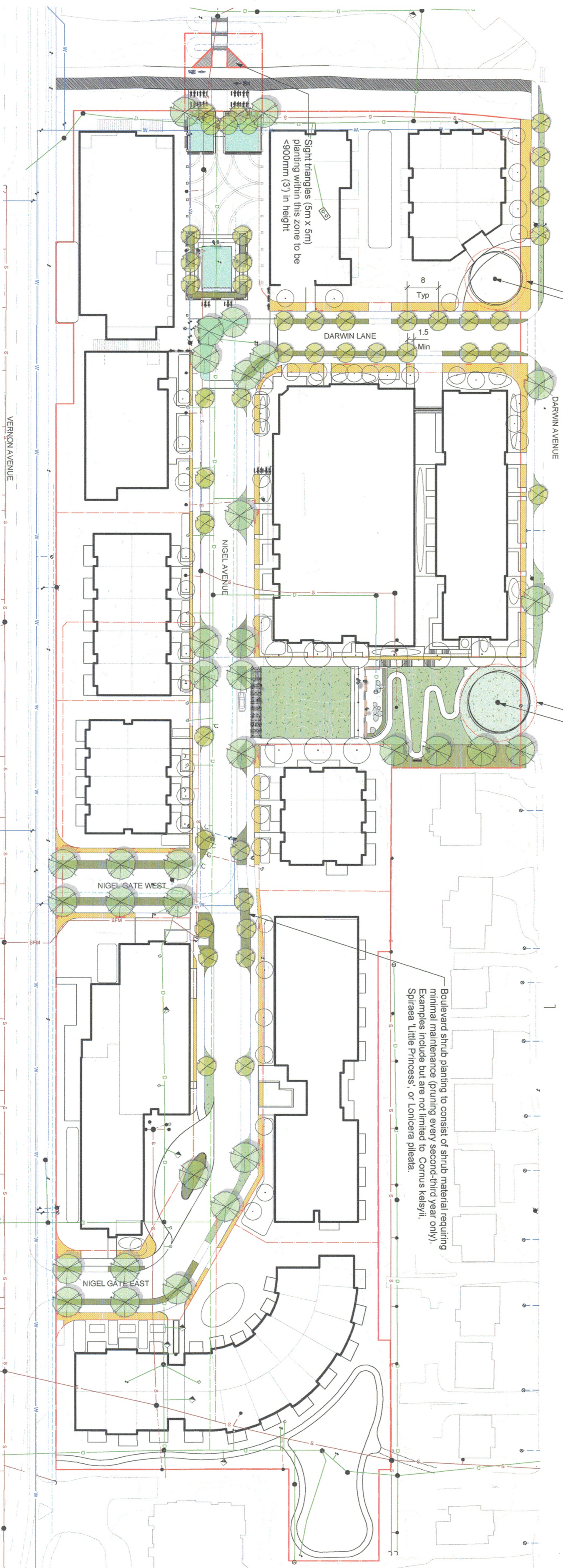
### PREFERRED LIST OF TREES

Large:	Medium:	Small:
Acer pseudoplatanus Fagus sylvatica Fraxinus pennsylvanica Ginkgo biloba Liquidambar styraciflua Liriodendron tulipifera Quercus garryana Quercus robur	Cornus Eddies White Wonder* Fraxinus oxycarpa Halesia monticola Magnolia x soulangeana Prunus salicina Zelkova serrata	Acer campestre Acer ginnala Acer glabrum Acer glabrum var. douglasii Cornus florida Syrax japonicus Quercus
<b>Large Columnar:</b> Quercus pauciflora Green Pillar* Quercus robur Crimschmidt*	<b>Medium Columnar:</b> Acer platanoides Crimson Sentry* Acer rubrum Bowhall* Acer rubrum Yamston* Carpinus betulus fastigiata Liquidambar styraciflua Emerald Sentinel*	<b>Small Rain Garden:</b> Acer circinatum Amelanchier laevis Amelanchier canadensis Rhamnus purshiana
<b>Large Rain Garden:</b> Acer rubrum Liriodendron tulipifera Quercus garryana* Quercus robur	<b>Medium Rain Garden:</b> Acer campestre Koeleria paniculata* Parrotia persica Cercis canadensis	<b>Small Rain Garden:</b> Acer circinatum Amelanchier laevis Amelanchier canadensis Rhamnus purshiana

\* Trees planted on raised portion or edges of rain gardens.

### LEGEND

	Landscape Area Proposed as Maintained Lawn
	Landscape Area Proposed as Shrub Planting
	Landscape Area Proposed as Rain Garden
	Landscape Area of back of sidewalk, landscape installation and maintenance assumed responsibility of adjacent property owner.
	Proposed offsite tree utilizing municipal soil resources, shown for illustrative purposes only.



**NOT FOR CONSTRUCTION**

<b>client</b> BC HOUSING VICTORIA, BC	<b>project</b> NIGEL VALLEY NEIGHBOURHOOD PLAN VICTORIA, BC	<b>sheet title</b> Offsite Tree Plan	<b>revision</b> 1 Client Review 17.09.07 2 Issued for Rezoning 17.05.25
---	--	---	---

**RECEIVED**  
OCT 03 2017  
PLANNING DEPT.  
DISTRICT OF SAANICH

**Murdoch deGreeff INC**  
Landscape Planning & Design  
2001 St. Charles Street  
Victoria, BC V8T 1G1  
Phone: 250.413.2811  
Fax: 250.413.2812

<b>project no.</b> 11.51.13	<b>scale</b> 1:500	<b>drawn by</b> IR	<b>checked by</b> SW/PdG
<b>revision no.</b> 2	<b>sheet no.</b> L3.01		

Original Rezoning Submission: 141 Trees  
Revised Rezoning Submission: 77 Trees (44 small & 33 Medium/Large Canopy)