

ARCHITECTS INCORPORATED
 1434 West 5th Avenue Vancouver BC V6L 1V4
 Copyright. All rights reserved. Reproduction in whole or in part is prohibited. This drawing is an instrument of service and the property of the architect and may not be used in any way without the written permission of the architect. Dimensions shall have precedence over related dimensions. Contractors shall verify and be responsible for all dimensions and conditions on the job. Architect shall be informed of any discrepancies or variations from the drawings and conditions on the drawing.

DP Submission
 April 26, 2024



ABSTRACT
 developments

Project
 801 McKenzie
 801 McKenzie Ave,
 811 McKenzie Ave and
 821 McKenzie Ave
 Victoria District, BC

- Lot 1, Section 49,
 Victoria District, Plan 20415
 - Lot 2 & 3, Section 49,
 Victoria District, Plan 1178

Scale: 1:150
Streetscape
 Elevations

Streetscape Elevations **A-1.01**

Material Legend

Provide samples of all exterior colours & materials for review & approval

- 1 **Roofing**
Flat: IKO 2-Ply SBS Roofing, Light Gray
- 2 **Fascia: Light**
Aluminum Metal Fascia
Ice White
- 3 **Fascia: Dark**
Aluminum Metal Fascia
Iron Ore
- 4 **Soffit: Feature Wood**
Wood-like Fibre Cement Board
6" Exposure, Woodtone Summer Wheat
Colour matched fasteners
- 5 **Soffit: Typical**
Light Coloured Fibre Cement Panel
B.M. OC 65 - Chantilly Lace
- 6 **Panels: Light**
Fibre Cement Panels
B.M. OC 65 - Chantilly Lace
Concealed Fasteners
- 7 **Panels: Beige**
Fibre Cement Panels
B.M. HC-80 Bleeker Beige
Concealed Fasteners
- 8 **Windows: Vinyl Dark**
High Performance Low-e Coated
Dark Coloured Frame - Charcoal Vinyl
- 9 **Windows: Vinyl Beige**
High Performance Low-e Coated
Beige Coloured Frame - Beige Vinyl
- 10 **Windows: Curtain Wall**
High Performance Low-e Coated
Beige Coloured Frame - Match Charcoal Vinyl
- 11 **Metal Flashing: Feature**
Custom Bent Heavy Gauge Flashing
Match Colour to Adjacent Material
- 12 **Glazing: Privacy Screens & Guards**
Guards: Lightly frosted safety glass
Privacy Screens: Opaque safety glass
- 13 **Dark Coloured Metal Guardrails**
Cascadia Metals Iron One
- 14 **STO Brick Veneer: Beige**
STO/Aztec-Yellow Tumbled
Norman Size - Half Running Bond
- 15 **Architectural Concrete**
Exposed Concrete or Elastomeric Paint
B.M. Pignon Gray 2133-50
- 16 **Aluminum Slats**
LUX Neo Lumber 2.25" x 2.25"
Tigerwood
- 17 **Stucco**
Off White
- 18 **Vertical Plank Siding**
LUX Random Plank
Driftwood

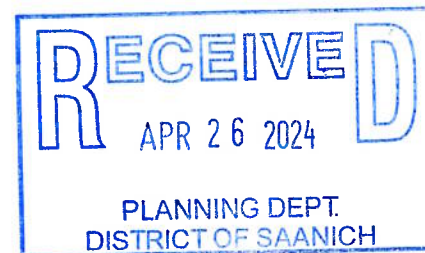
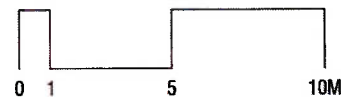


ARCHITECTS INCORPORATED
1454 West 8th Avenue Vancouver, BC V6I 1V4
Copyright: All rights reserved. Reproduction in whole or in part is prohibited. This drawing is an instrument of service. The property of the architect and may not be used in any way without the written permission of the office. When dimensions shall have precedence over stated dimensions. Contractors shall verify and be responsible for all dimensions and conditions on the job. Architect shall be informed of any discrepancies or variations from the dimensions and conditions on the drawing.

DP Submission
April 26, 2024



NORTH ELEVATION (McKenzie Ave)



Elevations **A-4.00**

Scale: 1:100
Elevations



ABSTRACT
developments

801 McKenzie
801 McKenzie Ave,
811 McKenzie Ave and
821 McKenzie Ave
Victoria District, BC

- Lot 1, Section 49,
Victoria District, Plan 20415
- Lot 2 & 3, Section 49,
Victoria District, Plan 1178

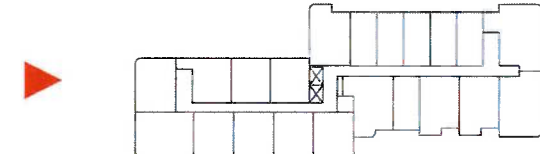
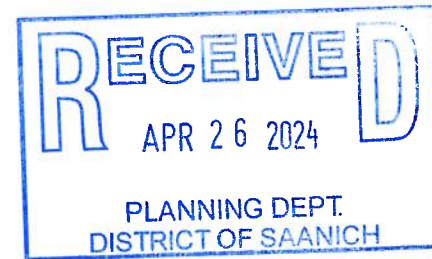
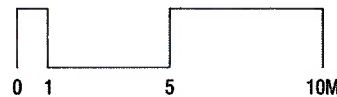
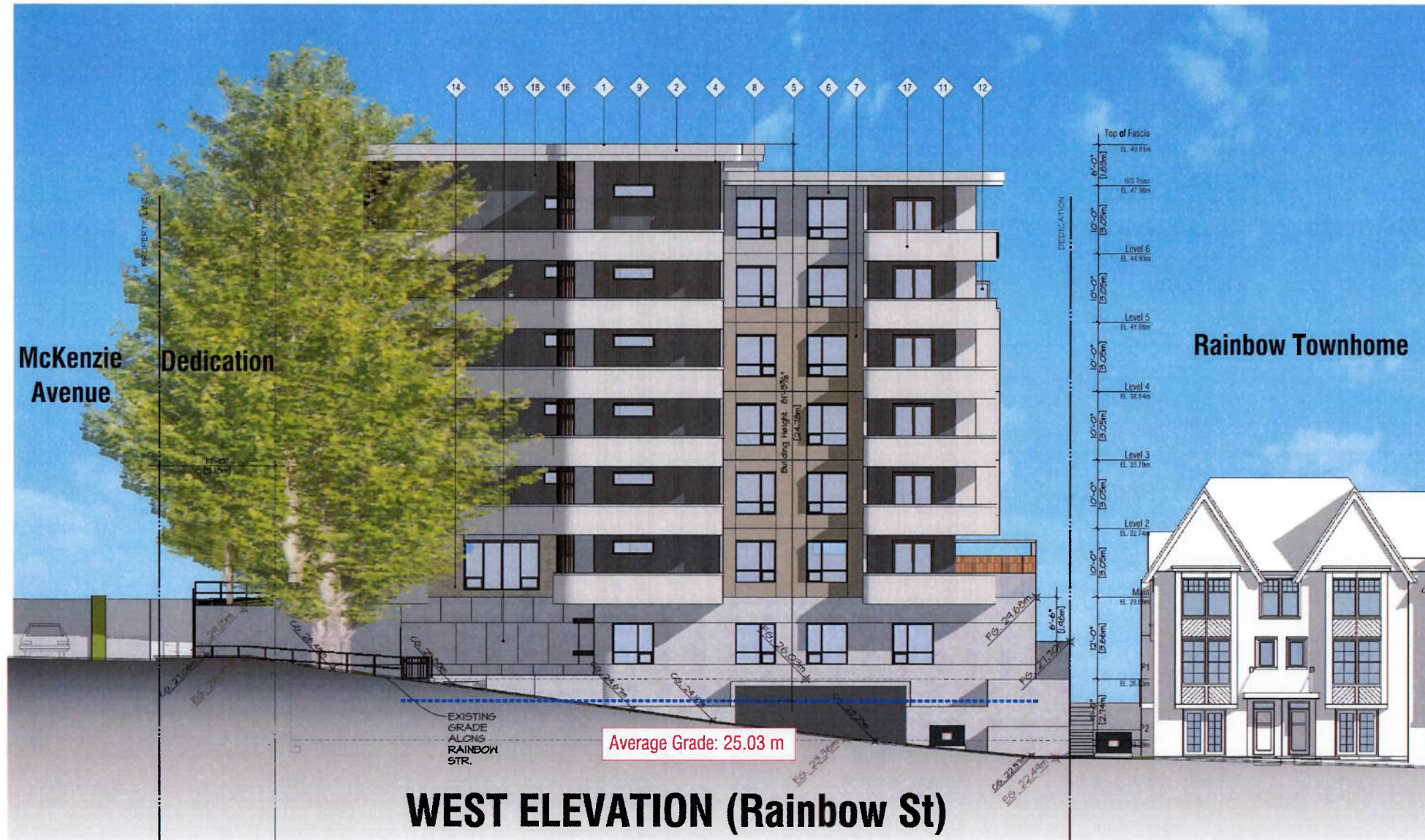
Material Legend

Provide samples of all exterior colours & materials for review & approval

- 1 **Roofing**
Flat, IKO 2-Ply SBS Roofing, Light Gray
- 2 **Fascia: Light**
Aluminum Metal Fascia
Ice White
- 3 **Fascia: Dark**
Aluminum Metal Fascia
Iron Ore
- 4 **Soffit: Feature Wood**
Wood-like Fibre Cement Board
6" Exposure, Woodlane Summer Wheat
Colour matched fasteners
- 5 **Soffit: Typical**
Light Coloured Fibre Cement Panel
B.M. OC 65 - Chantilly Lace
- 6 **Panels: Light**
Fibre Cement Panels
B.M. OC 65 - Chantilly Lace
Concealed Fasteners
- 7 **Panels: Beige**
Fibre Cement Panels
B.M. HC-80 Bleaker Beige
Concealed Fasteners
- 8 **Windows: Vinyl Dark**
High Performance Low-e Coated
Dark Coloured Frame - Charcoal Vinyl
- 9 **Windows: Vinyl Beige**
High Performance Low-e Coated
Beige Coloured Frame - Beige Vinyl
- 10 **Windows: Curtain Wall**
High Performance Low-e Coated
Beige Coloured Frame - Match Charcoal Vinyl
- 11 **Metal Flashing: Feature**
Custom Bent Heavy Gauge Flashing
Match Colour to Adjacent Material
- 12 **Glazing: Privacy Screens & Guards**
Guards: Lightly frosted safety glass
Privacy Screens: Opaque safety glass
- 13 **Dark Coloured Metal Guardrails**
Cascadia Metals Iron One
- 14 **STO Brick Veneer: Beige**
STO/Aztec-Yellow Tumbled
Norman Size - Half Running Bond
- 15 **Architectural Concrete**
Exposed Concrete or Elastomeric Paint
B.M. Plegon Gray 2133-50
- 16 **Aluminum Slats**
LUX Neo Lumber 2.25" x 2.25"
Tigerwood
- 17 **Stucco**
Off White
- 18 **Vertical Plank Siding**
LUX Random Plank
Driftwood



DP Submission
April 26, 2024



ABSTRACT
developments

801 McKenzie
801 McKenzie Ave,
811 McKenzie Ave and
821 McKenzie Ave
Victoria District, BC

- Lot 1, Section 49,
Victoria District, Plan 20415
- Lot 2 & 3, Section 49,
Victoria District, Plan 1178

Scale: 1:100
Elevations

Elevations **A-4.01**

Material Legend

- 1 **Roofing**
Flat: IKO 2-Ply SBS Roofing, Light Gray
- 2 **Fascia: Light**
Aluminum Metal Fascia
Ice White
- 3 **Fascia: Dark**
Aluminum Metal Fascia
Iron Ore
- 4 **Soffit: Feature Wood**
Wood-like Fibre Cement Board
6" Exposure, Woodtone Summer Wheat
Colour matched fasteners
- 5 **Soffit: Typical**
Light Coloured Fibre Cement Panel
B.M. OC 65 - Chantilly Lace
- 6 **Panels: Light**
Fibre Cement Panels
B.M. OC 65 - Chantilly Lace
Concealed Fasteners
- 7 **Panels: Beige**
Fibre Cement Panels
B.M. HC-80 Bleeker Beige
Concealed Fasteners
- 8 **Windows: Vinyl Dark**
High Performance Low-e Coated
Dark Coloured Frame - Charcoal Vinyl
- 9 **Windows: Vinyl Beige**
High Performance Low-e Coated
Beige Coloured Frame - Beige Vinyl
- 10 **Windows: Curtain Wall**
High Performance Low-e Coated
Beige Coloured Frame - Match Charcoal Vinyl
- 11 **Metal Flashing: Feature**
Custom Bent Heavy Gauge Flashing
Match Colour to Adjacent Material
- 12 **Glazing: Privacy Screens & Guards**
Guards: Lightly frosted safety glass
Privacy Screens: Opaque safety glass
- 13 **Dark Coloured Metal Guardrails**
Cascadia Metals Iron One
- 14 **STO Brick Veneer: Beige**
STO/Aztec-Yellow Tumbled
Norman Size - Half Running Bond
- 15 **Architectural Concrete**
Exposed Concrete or Elastomeric Paint
B.M. Plegion Gray 2133-50
- 16 **Aluminum Slats**
LUX Neo Lumber 2.25" x 2.25"
Tigerwood
- 17 **Stucco**
Off White
- 18 **Vertical Plank Siding**
LUX Random Plank
Driftwood

Provide samples of all exterior colours & materials for review & approval



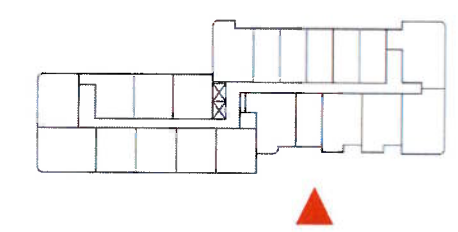
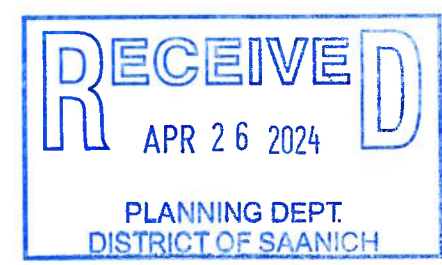
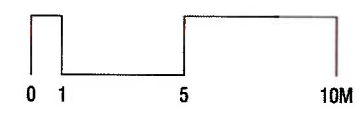
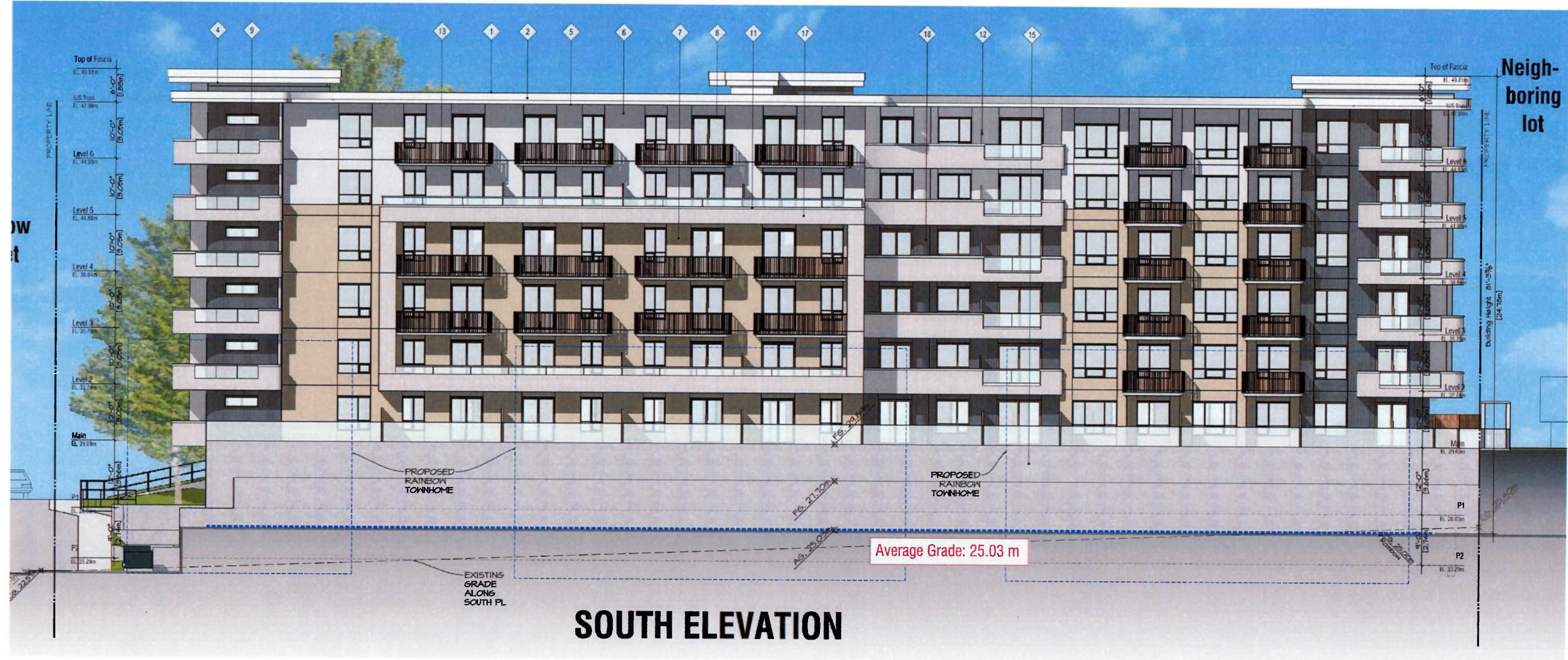
DP Submission
April 26, 2024



801 McKenzie
801 McKenzie Ave,
811 McKenzie Ave and
821 McKenzie Ave
Victoria District, BC

- Lot 1, Section 49,
Victoria District, Plan 20415
- Lot 2 & 3, Section 49,
Victoria District, Plan 1178

Scale: 1/100
Elevations



Elevations **A-4.02**

Material Legend

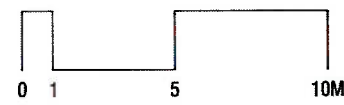
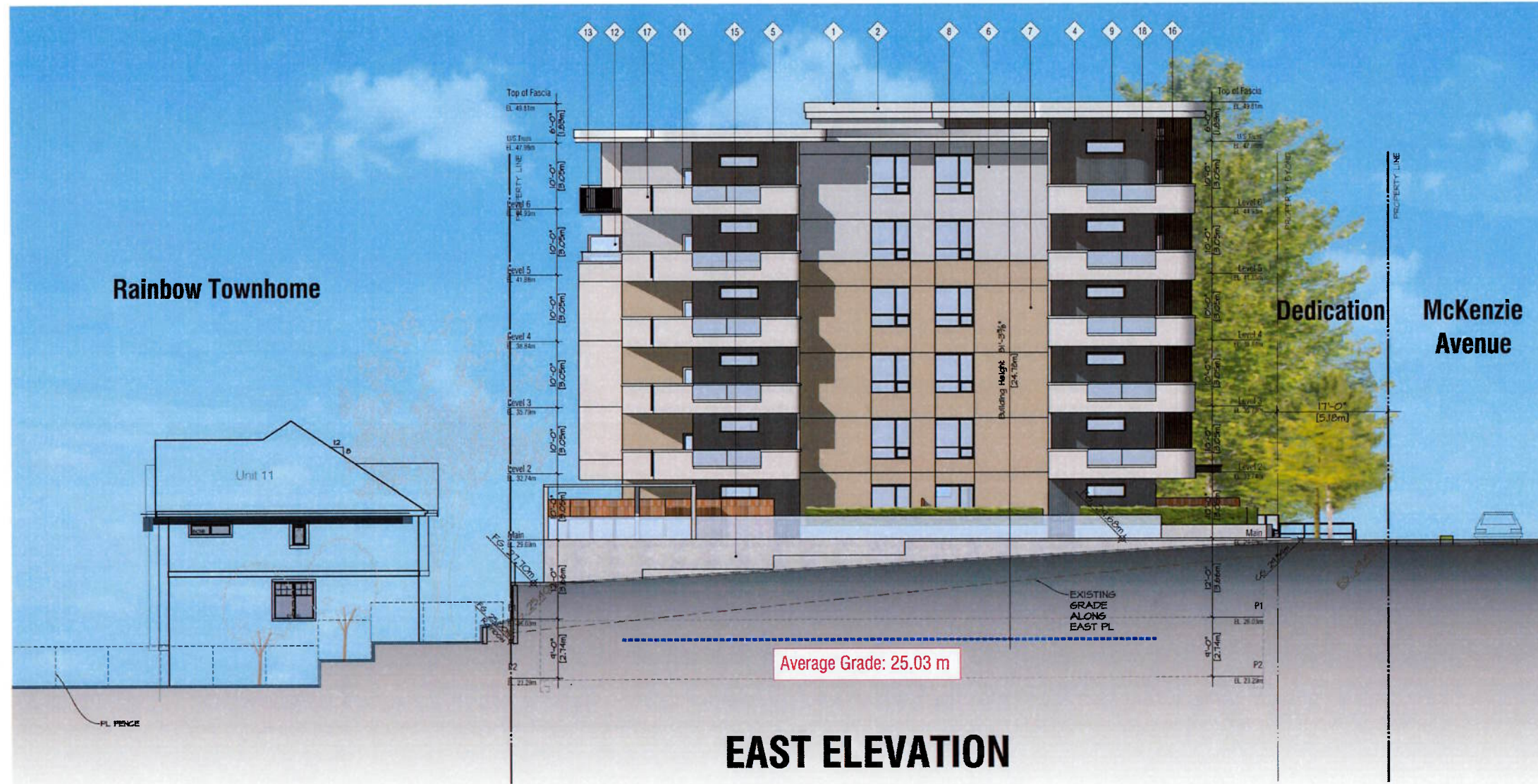
Provide samples of all exterior colours & materials for review & approval

- 1 **Roofing**
Flat: IKO 2-Ply SBS Roofing, Light Gray
- 2 **Fascia: Light**
Aluminum Metal Fascia
Ice White
- 3 **Fascia: Dark**
Aluminum Metal Fascia
Iron Ore
- 4 **Soffit: Feature Wood**
Wood-like Fibre Cement Board
6" Exposure, Woodtone Summer Wheat
Colour matched fasteners
- 5 **Soffit: Typical**
Light Coloured Fibre Cement Panel
B.M. OC 65 - Chantilly Lace
- 6 **Panels: Light**
Fibre Cement Panels
B.M. OC 65 - Chantilly Lace
Concealed Fasteners
- 7 **Panels: Beige**
Fibre Cement Panels
B.M. HC-80 Bleeker Beige
Concealed Fasteners
- 8 **Windows: Vinyl Dark**
High Performance Low-e Coated
Dark Coloured Frame - Charcoal Vinyl
- 9 **Windows: Vinyl Beige**
High Performance Low-e Coated
Beige Coloured Frame - Beige Vinyl
- 10 **Windows: Curtain Wall**
High Performance Low-e Coated
Beige Coloured Frame - Match Charcoal Vinyl
- 11 **Metal Flashing: Feature**
Custom Bent Heavy Gauge Flashing
Match Colour to Adjacent Material
- 12 **Glazing: Privacy Screens & Guards**
Guards: Lightly frosted safety glass
Privacy Screens: Opaque safety glass
- 13 **Dark Coloured Metal Guardrails**
Cascadia Metals Iron One
- 14 **STO Brick Veneer: Beige**
STO/Aztec-Yellow Tumbled
Norman Size - Half Running Bond
- 15 **Architectural Concrete**
Exposed Concrete or Elastomeric Paint
B.M. Pigeon Gray 2133-50
- 16 **Aluminum Slats**
LUX Neo Lumber 2.25' x 2.25'
Tigerwood
- 17 **Stucco**
Off White
- 18 **Vertical Plank Siding**
LUX Random Plank
Driftwood

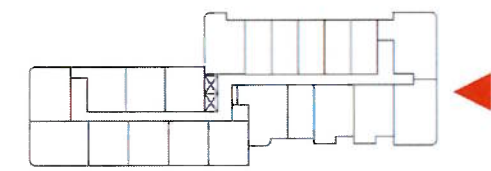


ARCHITECTS INCORPORATED
1454 West 5th Avenue Vancouver BC V6H1V4
Copyright. All rights reserved. Reproduction in whole or in part is prohibited. This drawing is an instrument of service is the property of the architect and may not be used in any way without the written consent of the architect. Dimensions shall have precedence over scaled dimensions. Contractors shall verify and be responsible for all dimensions and conditions on the job. Architects shall be informed of any discrepancies or violations from the drawings and conditions on the drawing.

DP Submission
April 25, 2024



RECEIVED
APR 26 2024
PLANNING DEPT.
DISTRICT OF SAANICH



ABSTRACT
developments

801 McKenzie Ave,
811 McKenzie Ave and
821 McKenzie Ave
Victoria District, BC

- Lot 1, Section 49,
Victoria District, Plan 20415
- Lot 2 & 3, Section 49,
Victoria District, Plan 1178

Scale: 1:100
Elevations

Elevations **A-4.03**