

RECEIVED
OCT 05 2023
PLANNING DEPT.
DISTRICT OF SANCHICH



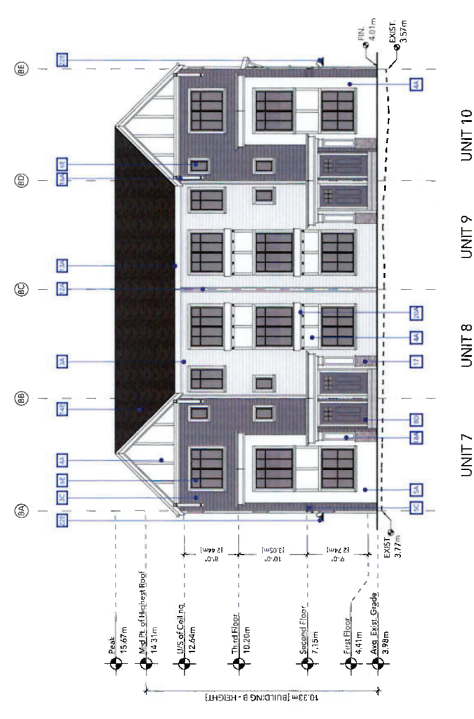
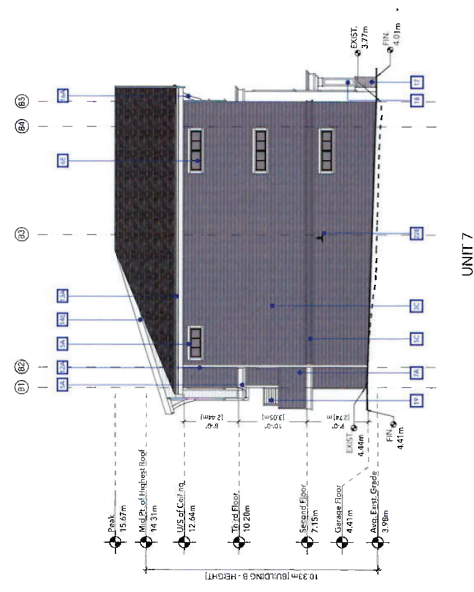
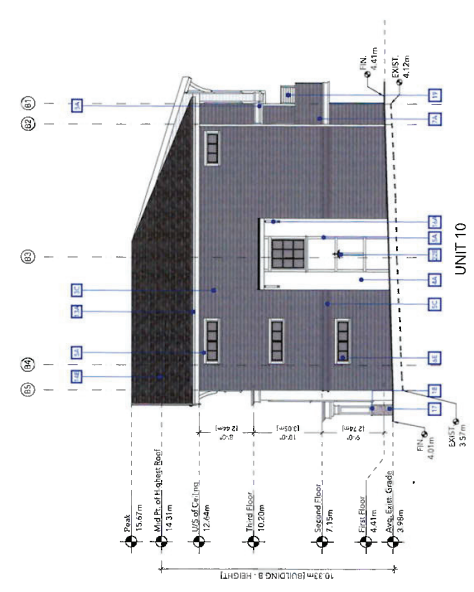
REV	DATE	DESCRIPTION	BY	APP
1	22.09.2023	ISSUED FOR PERMITS	AB	AU
2	22.09.2023	ISSUED FOR PERMITS	AB	AU

PROJECT
ABSTRACT
GORGE RESIDENTIAL
992 GORGE ROAD W,
VICTORIA, BC

PROJECT NO. 21067
SCALE 1:100
DATE SEPTEMBER 22, 2023

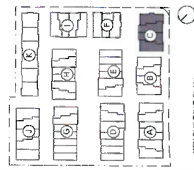
SHEET TITLE
ELEVATIONS - BUILDING
B

COLOUR
A ARCTIC WHITE
B LIGHT GREY
C MID GREY
D HUNTER BLACK
E HUNTER BLACK



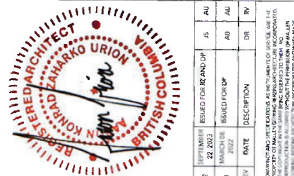
MATERIAL LEGEND

MATERIAL / ITEM
1 CONCRETE
2 BRICK
3 FIBRE CEMENT SIDING (RANDOM)
4 FIBRE CEMENT SIDING (HORIZONTAL)
5 FIBRE CEMENT SIDING (VERTICAL)
6 FIBRE CEMENT SIDING (RANDOM)
7 ASPHALT ROOFING
8 ASPHALT ROOFING (GREEN)
9 INSULATION (WALLS)
10 INSULATION (ROOF)
11 INSULATION (FLOOR)
12 ASPHALT ROOFING (GREEN)
13 ASPHALT ROOFING (GREEN)
14 ASPHALT ROOFING (GREEN)
15 ASPHALT ROOFING (GREEN)
16 ASPHALT ROOFING (GREEN)
17 ASPHALT ROOFING (GREEN)
18 ASPHALT ROOFING (GREEN)
19 ASPHALT ROOFING (GREEN)
20 ASPHALT ROOFING (GREEN)
21 ASPHALT ROOFING (GREEN)
22 WALL INSULATION (GREEN)



KEY BUILDING PLAN

RECEIVED
OCT 05 2023
PLANNING DEPT.
DISTRICT OF SAANICH



NO.	DATE	DESCRIPTION	BY	CHK
1	22.09.2023	ISSUED FOR PERMITS	AY	AY
2	22.09.2023	REVISED FOR PERMITS	AY	AY

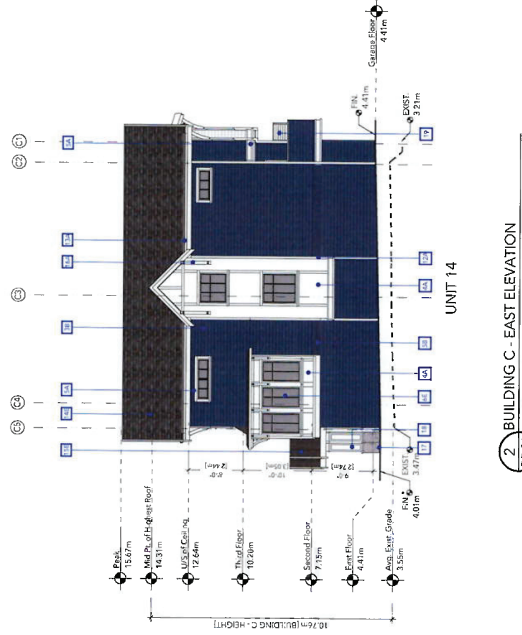
PROJECT NO: 21067
DATE: SEPTEMBER 22, 2023

ABSTRACT
GORGE RESIDENTIAL
992 GORGE ROAD W.
VICTORIA, BC

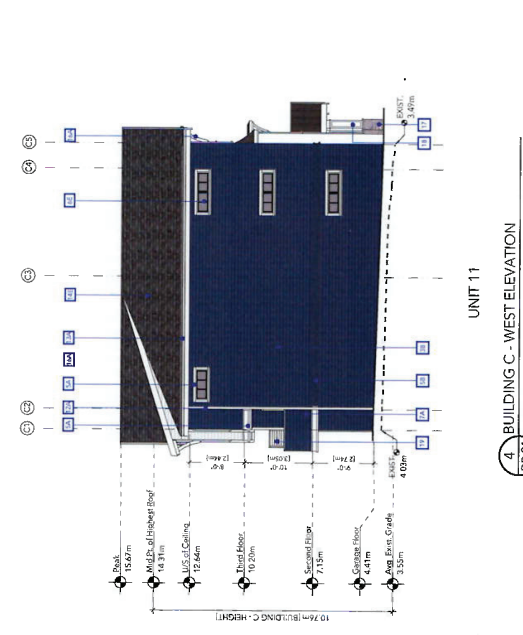
ELEVATIONS - BUILDING C

NO.	DATE	DESCRIPTION	BY	CHK
1	22.09.2023	ISSUED FOR PERMITS	AY	AY
2	22.09.2023	REVISED FOR PERMITS	AY	AY

MATERIAL / ITEM	COLOUR
1. CONCRETE	A
2. EXTERIOR WALLS	B
3. EXTERIOR SIDING	C
4. EXTERIOR SIDING	D
5. EXTERIOR SIDING	E
6. EXTERIOR SIDING	F
7. EXTERIOR SIDING	G
8. EXTERIOR SIDING	H
9. EXTERIOR SIDING	I
10. EXTERIOR SIDING	J
11. EXTERIOR SIDING	K
12. EXTERIOR SIDING	L
13. EXTERIOR SIDING	M
14. EXTERIOR SIDING	N
15. EXTERIOR SIDING	O
16. EXTERIOR SIDING	P
17. EXTERIOR SIDING	Q
18. EXTERIOR SIDING	R
19. EXTERIOR SIDING	S
20. EXTERIOR SIDING	T
21. EXTERIOR SIDING	U
22. EXTERIOR SIDING	V



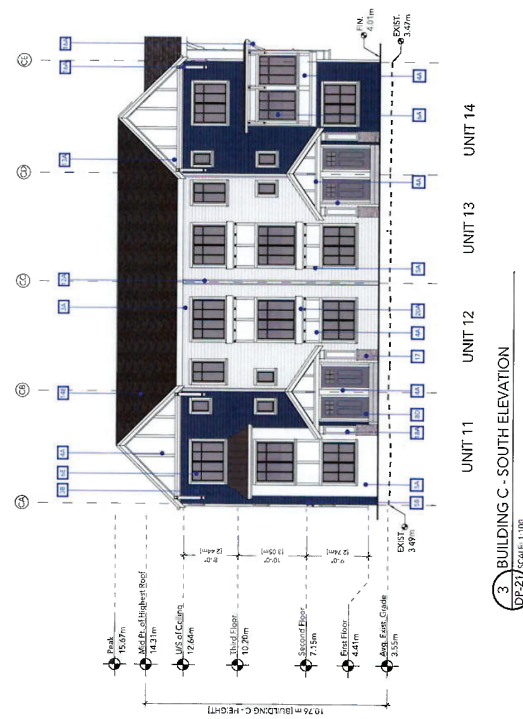
2. BUILDING C - EAST ELEVATION
DP-21 SCALE 1:100



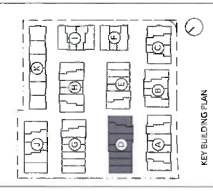
4. BUILDING C - WEST ELEVATION
DP-21 SCALE 1:100



1. BUILDING C - NORTH ELEVATION
DP-21 SCALE 1:100



3. BUILDING C - SOUTH ELEVATION
DP-21 SCALE 1:100



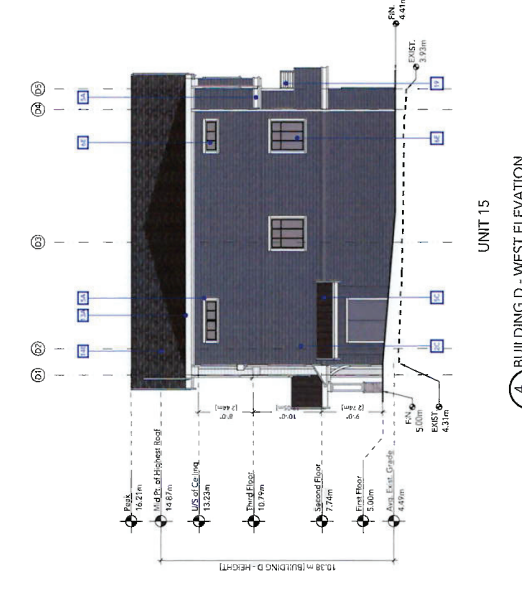
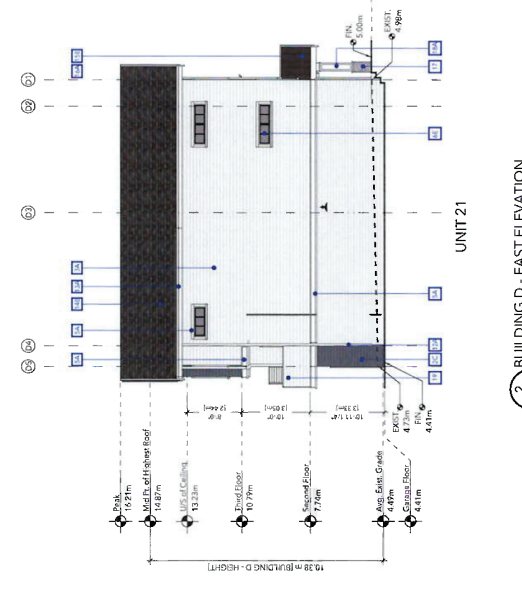
RECEIVED
OCT 05 2023
PLANNING DEPT.
DISTRICT OF SAANICH

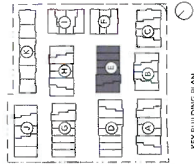


REV	DATE	DESCRIPTION	BY	CHK
1	20.09.2023	ISSUED FOR PERIOD OF 10	AAU	
2	20.09.2023	ISSUED FOR PERIOD OF 10	AAU	

ABSTRACT GORGE RESIDENTIAL 992 GORGE ROAD W, VICTORIA, BC	
PROJECT TITLE ELEVATIONS - BUILDING D	
PROJECT NO 21067	DATE SEPTEMBER 22, 2023
DRAWING NO DP-22	REVISION 1

MATERIAL / ITEM
1 CONCRETE
2 ASPHALT
3 BRICK CLAY BRICK (SANDLITE)
4 BRICK CLAY BRICK (SANDLITE)
5 BRICK CLAY BRICK (SANDLITE)
6 BRICK CLAY BRICK (SANDLITE)
7 BRICK CLAY BRICK (SANDLITE)
8 BRICK CLAY BRICK (SANDLITE)
9 BRICK CLAY BRICK (SANDLITE)
10 BRICK CLAY BRICK (SANDLITE)
11 BRICK CLAY BRICK (SANDLITE)
12 BRICK CLAY BRICK (SANDLITE)
13 BRICK CLAY BRICK (SANDLITE)
14 BRICK CLAY BRICK (SANDLITE)
15 BRICK CLAY BRICK (SANDLITE)
16 BRICK CLAY BRICK (SANDLITE)
17 BRICK CLAY BRICK (SANDLITE)
18 BRICK CLAY BRICK (SANDLITE)
19 BRICK CLAY BRICK (SANDLITE)
20 BRICK CLAY BRICK (SANDLITE)
21 BRICK CLAY BRICK (SANDLITE)
22 BRICK CLAY BRICK (SANDLITE)





KEY BUILDING PLAN

RECEIVED

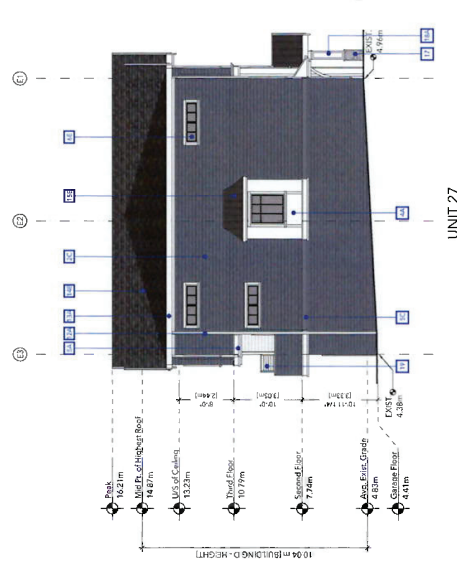
OCT 05 2023
 PLANNING DEPT.
 DISTRICT OF SANECH



NO.	DATE	DESCRIPTION	BY	CHK	APP
1	22.09.2023	ISSUED FOR PERMIT	AK	AK	
2	05.10.2023	ISSUED FOR STAMP	AK	AK	

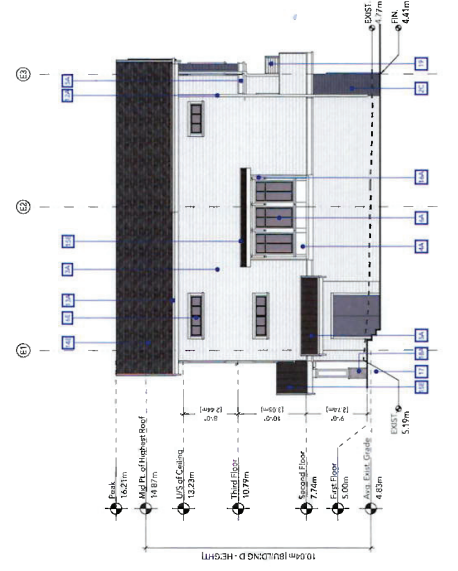
PROJECT: ABSTRACT
CLIENT: GORGE RESIDENTIAL
ADDRESS: 992 GORGE ROAD W., VICTORIA, BC

MATERIAL / ITEM	
1	CONCRETE
2	PERFORATED BRICK
3	PERFORATED BRICK WITH BOND BRICK
4	PERFORATED BRICK WITH BOND BRICK AND GUTTER
5	PERFORATED BRICK WITH BOND BRICK AND GUTTER WITH COLOUR GROUT
6	PERFORATED BRICK WITH BOND BRICK AND GUTTER WITH COLOUR GROUT AND METAL ROOF
7	PERFORATED BRICK WITH BOND BRICK AND GUTTER WITH COLOUR GROUT AND METAL ROOF WITH METAL ROOF GUTTER
8	PERFORATED BRICK WITH BOND BRICK AND GUTTER WITH COLOUR GROUT AND METAL ROOF WITH METAL ROOF GUTTER AND METAL ROOF GUTTER
9	PERFORATED BRICK WITH BOND BRICK AND GUTTER WITH COLOUR GROUT AND METAL ROOF WITH METAL ROOF GUTTER AND METAL ROOF GUTTER WITH METAL ROOF GUTTER
10	PERFORATED BRICK WITH BOND BRICK AND GUTTER WITH COLOUR GROUT AND METAL ROOF WITH METAL ROOF GUTTER AND METAL ROOF GUTTER WITH METAL ROOF GUTTER AND METAL ROOF GUTTER
11	PERFORATED BRICK WITH BOND BRICK AND GUTTER WITH COLOUR GROUT AND METAL ROOF WITH METAL ROOF GUTTER AND METAL ROOF GUTTER WITH METAL ROOF GUTTER AND METAL ROOF GUTTER
12	PERFORATED BRICK WITH BOND BRICK AND GUTTER WITH COLOUR GROUT AND METAL ROOF WITH METAL ROOF GUTTER AND METAL ROOF GUTTER WITH METAL ROOF GUTTER AND METAL ROOF GUTTER
13	PERFORATED BRICK WITH BOND BRICK AND GUTTER WITH COLOUR GROUT AND METAL ROOF WITH METAL ROOF GUTTER AND METAL ROOF GUTTER WITH METAL ROOF GUTTER AND METAL ROOF GUTTER
14	PERFORATED BRICK WITH BOND BRICK AND GUTTER WITH COLOUR GROUT AND METAL ROOF WITH METAL ROOF GUTTER AND METAL ROOF GUTTER WITH METAL ROOF GUTTER AND METAL ROOF GUTTER
15	PERFORATED BRICK WITH BOND BRICK AND GUTTER WITH COLOUR GROUT AND METAL ROOF WITH METAL ROOF GUTTER AND METAL ROOF GUTTER WITH METAL ROOF GUTTER AND METAL ROOF GUTTER
16	PERFORATED BRICK WITH BOND BRICK AND GUTTER WITH COLOUR GROUT AND METAL ROOF WITH METAL ROOF GUTTER AND METAL ROOF GUTTER WITH METAL ROOF GUTTER AND METAL ROOF GUTTER
17	PERFORATED BRICK WITH BOND BRICK AND GUTTER WITH COLOUR GROUT AND METAL ROOF WITH METAL ROOF GUTTER AND METAL ROOF GUTTER WITH METAL ROOF GUTTER AND METAL ROOF GUTTER
18	PERFORATED BRICK WITH BOND BRICK AND GUTTER WITH COLOUR GROUT AND METAL ROOF WITH METAL ROOF GUTTER AND METAL ROOF GUTTER WITH METAL ROOF GUTTER AND METAL ROOF GUTTER
19	PERFORATED BRICK WITH BOND BRICK AND GUTTER WITH COLOUR GROUT AND METAL ROOF WITH METAL ROOF GUTTER AND METAL ROOF GUTTER WITH METAL ROOF GUTTER AND METAL ROOF GUTTER
20	PERFORATED BRICK WITH BOND BRICK AND GUTTER WITH COLOUR GROUT AND METAL ROOF WITH METAL ROOF GUTTER AND METAL ROOF GUTTER WITH METAL ROOF GUTTER AND METAL ROOF GUTTER
21	PERFORATED BRICK WITH BOND BRICK AND GUTTER WITH COLOUR GROUT AND METAL ROOF WITH METAL ROOF GUTTER AND METAL ROOF GUTTER WITH METAL ROOF GUTTER AND METAL ROOF GUTTER
22	PERFORATED BRICK WITH BOND BRICK AND GUTTER WITH COLOUR GROUT AND METAL ROOF WITH METAL ROOF GUTTER AND METAL ROOF GUTTER WITH METAL ROOF GUTTER AND METAL ROOF GUTTER
COLOUR	
A	ARCTIC WHITE
B	PERFORATED BRICK
C	PERFORATED BRICK WITH BOND BRICK
D	PERFORATED BRICK WITH BOND BRICK
E	PERFORATED BRICK WITH BOND BRICK



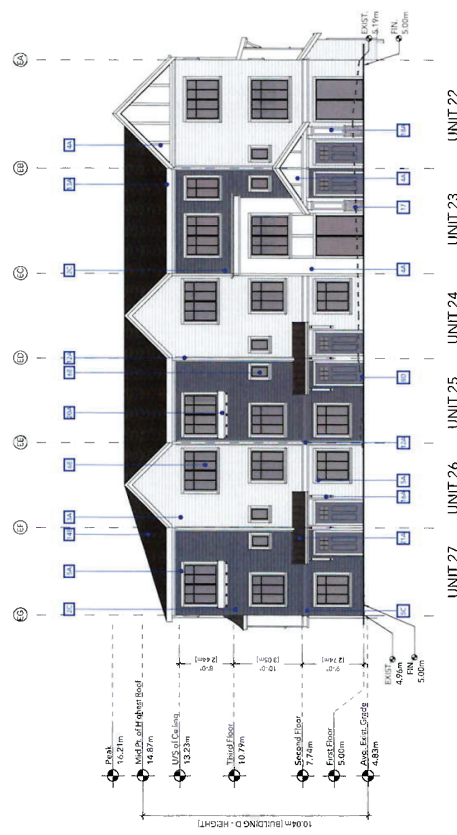
UNIT 27

2 BUILDING E - EAST ELEVATION
 DP-23 SCALE: 1:100



UNIT 15

4 BUILDING E - WEST ELEVATION
 DP-23 SCALE: 1:100



UNIT 22

UNIT 23

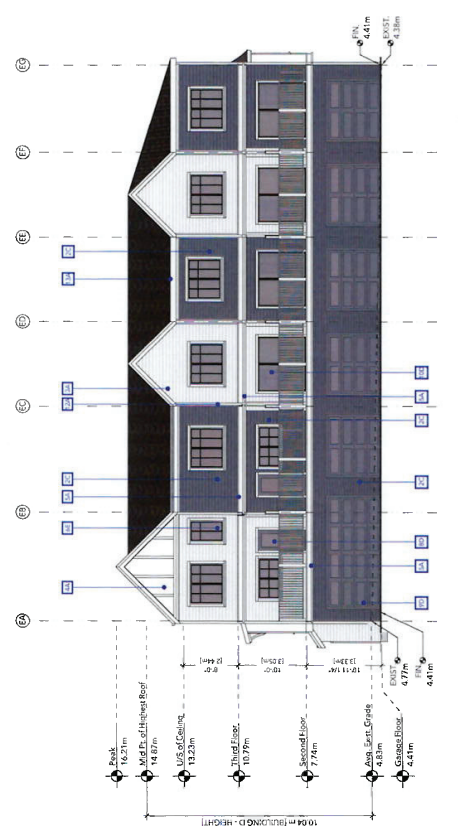
UNIT 24

UNIT 25

UNIT 26

UNIT 27

1 BUILDING E - NORTH ELEVATION
 DP-23 SCALE: 1:100



UNIT 21

UNIT 20

UNIT 19

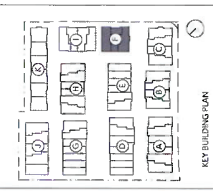
UNIT 18

UNIT 17

UNIT 16

UNIT 15

3 BUILDING E - SOUTH ELEVATION
 DP-23 SCALE: 1:100



RECEIVED
OCT 05 2023
PLANNING DEPT.
DISTRICT OF SASHICHT



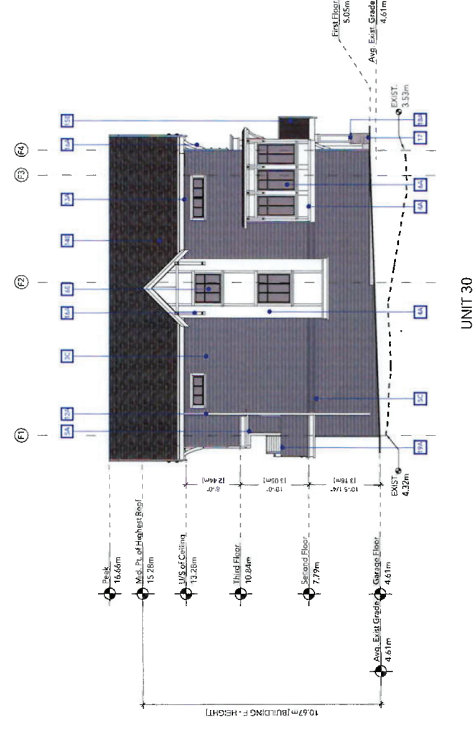
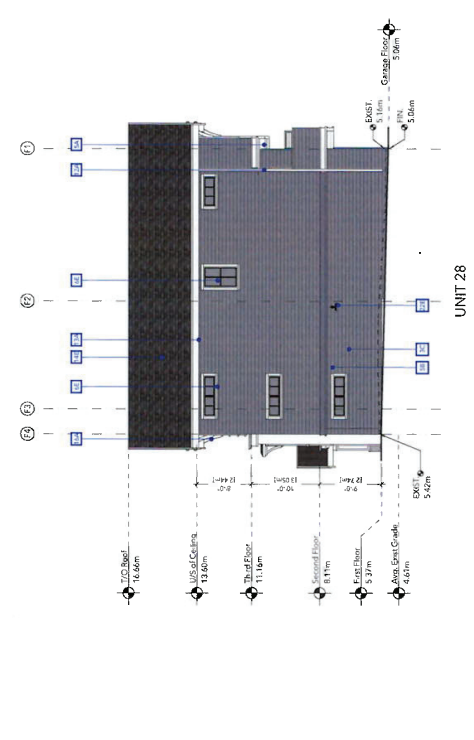
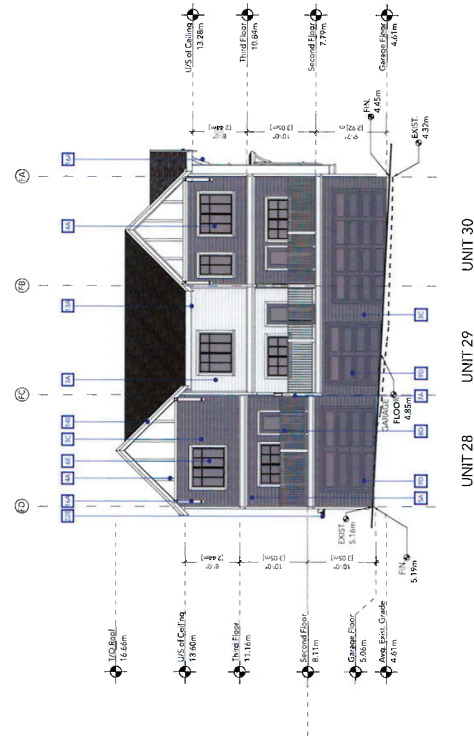
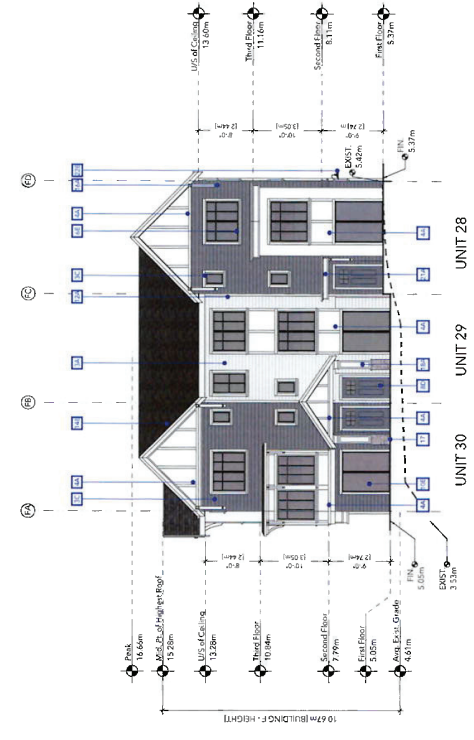
REV	DATE	DESCRIPTION	BY	CHK
1	22.03.2023	ISSUED FOR I/P	AS	AU
2	22.03.2023	ISSUED FOR I/P	AS	AU

ABSTRACT
GORGE RESIDENTIAL
992 GORGE ROAD W.
VICTORIA, BC

PROJECT NO: 21067
SCALE: AS SHOWN
DATE: SEPTEMBER 22, 2023

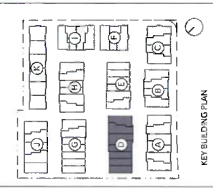
ELEVATIONS - BUILDING F

COLOUR:
A ACETIC WHITE
B TRAVERTINE
C TRAVERTINE
D BRIGHT BRICK
E BRIGHT BRICK



MATERIAL LEGEND

MATERIAL / ITEM
1 CONCRETE
2 BRICK
3 TRAVERTINE
4 TRAVERTINE
5 TRAVERTINE
6 TRAVERTINE
7 TRAVERTINE
8 TRAVERTINE
9 TRAVERTINE
10 TRAVERTINE
11 TRAVERTINE
12 TRAVERTINE
13 TRAVERTINE
14 TRAVERTINE
15 TRAVERTINE
16 TRAVERTINE
17 TRAVERTINE
18 TRAVERTINE
19 TRAVERTINE
20 TRAVERTINE
21 TRAVERTINE
22 TRAVERTINE



RECEIVED
OCT 05 2023
PLANNING DEPT.
DISTRICT OF SAANICH



REV	DATE	DESCRIPTION	BY	CHK
1	20.09.2023	ISSUED FOR PERMITS	AM	AM
2	20.09.2023	ISSUED FOR PERMITS	AM	AM

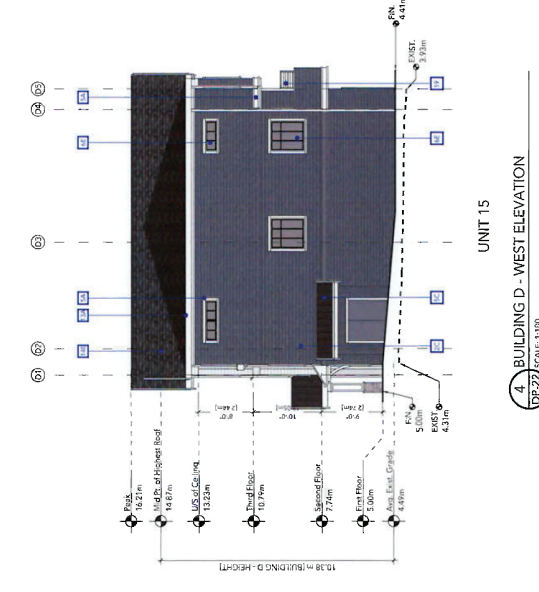
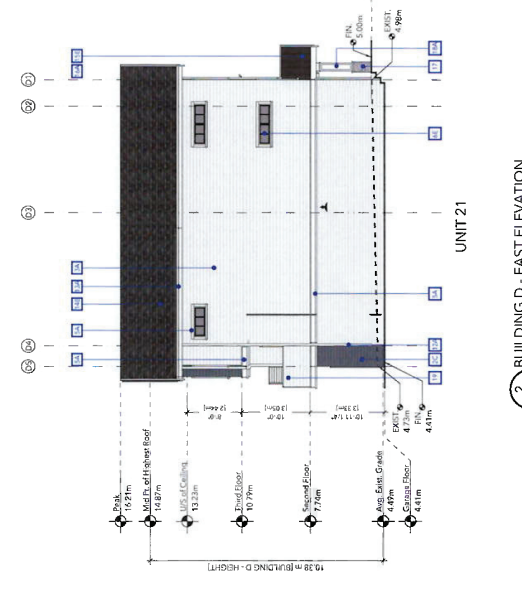
ABSTRACT
GORGE RESIDENTIAL
992 GORGE ROAD W,
VICTORIA, BC

ELEVATIONS - BUILDING D

PROJECT TITLE
DATE
21/06/23
DATE
SEPTEMBER 22, 2023
DRAWING NO.
DP-22
SECTION
1

MATERIAL LEGEND

MATERIAL / ITEM
1 CONCRETE
2 ASPHALT
3 BRICK
4 METAL CLADDING (STEEL)
5 METAL CLADDING (ALUMINUM)
6 METAL CLADDING (COPPER)
7 METAL CLADDING (ZINC)
8 METAL CLADDING (CERAMIC TILE)
9 METAL CLADDING (WOOD GRAIN)
10 METAL CLADDING (GLASS)
11 METAL CLADDING (STONE)
12 METAL CLADDING (BRICK)
13 METAL CLADDING (CONCRETE)
14 METAL CLADDING (METAL)
15 METAL CLADDING (STEEL)
16 METAL CLADDING (ALUMINUM)
17 METAL CLADDING (COPPER)
18 METAL CLADDING (ZINC)
19 METAL CLADDING (CERAMIC TILE)
20 METAL CLADDING (WOOD GRAIN)
21 METAL CLADDING (GLASS)
22 METAL CLADDING (STONE)
23 METAL CLADDING (BRICK)
24 METAL CLADDING (CONCRETE)
25 METAL CLADDING (METAL)
26 METAL CLADDING (STEEL)
27 METAL CLADDING (ALUMINUM)
28 METAL CLADDING (COPPER)
29 METAL CLADDING (ZINC)
30 METAL CLADDING (CERAMIC TILE)
31 METAL CLADDING (WOOD GRAIN)
32 METAL CLADDING (GLASS)
33 METAL CLADDING (STONE)
34 METAL CLADDING (BRICK)
35 METAL CLADDING (CONCRETE)
36 METAL CLADDING (METAL)
37 METAL CLADDING (STEEL)
38 METAL CLADDING (ALUMINUM)
39 METAL CLADDING (COPPER)
40 METAL CLADDING (ZINC)
41 METAL CLADDING (CERAMIC TILE)
42 METAL CLADDING (WOOD GRAIN)
43 METAL CLADDING (GLASS)
44 METAL CLADDING (STONE)
45 METAL CLADDING (BRICK)
46 METAL CLADDING (CONCRETE)
47 METAL CLADDING (METAL)
48 METAL CLADDING (STEEL)
49 METAL CLADDING (ALUMINUM)
50 METAL CLADDING (COPPER)
51 METAL CLADDING (ZINC)
52 METAL CLADDING (CERAMIC TILE)
53 METAL CLADDING (WOOD GRAIN)
54 METAL CLADDING (GLASS)
55 METAL CLADDING (STONE)
56 METAL CLADDING (BRICK)
57 METAL CLADDING (CONCRETE)
58 METAL CLADDING (METAL)
59 METAL CLADDING (STEEL)
60 METAL CLADDING (ALUMINUM)
61 METAL CLADDING (COPPER)
62 METAL CLADDING (ZINC)
63 METAL CLADDING (CERAMIC TILE)
64 METAL CLADDING (WOOD GRAIN)
65 METAL CLADDING (GLASS)
66 METAL CLADDING (STONE)
67 METAL CLADDING (BRICK)
68 METAL CLADDING (CONCRETE)
69 METAL CLADDING (METAL)
70 METAL CLADDING (STEEL)
71 METAL CLADDING (ALUMINUM)
72 METAL CLADDING (COPPER)
73 METAL CLADDING (ZINC)
74 METAL CLADDING (CERAMIC TILE)
75 METAL CLADDING (WOOD GRAIN)
76 METAL CLADDING (GLASS)
77 METAL CLADDING (STONE)
78 METAL CLADDING (BRICK)
79 METAL CLADDING (CONCRETE)
80 METAL CLADDING (METAL)
81 METAL CLADDING (STEEL)
82 METAL CLADDING (ALUMINUM)
83 METAL CLADDING (COPPER)
84 METAL CLADDING (ZINC)
85 METAL CLADDING (CERAMIC TILE)
86 METAL CLADDING (WOOD GRAIN)
87 METAL CLADDING (GLASS)
88 METAL CLADDING (STONE)
89 METAL CLADDING (BRICK)
90 METAL CLADDING (CONCRETE)
91 METAL CLADDING (METAL)
92 METAL CLADDING (STEEL)
93 METAL CLADDING (ALUMINUM)
94 METAL CLADDING (COPPER)
95 METAL CLADDING (ZINC)
96 METAL CLADDING (CERAMIC TILE)
97 METAL CLADDING (WOOD GRAIN)
98 METAL CLADDING (GLASS)
99 METAL CLADDING (STONE)
100 METAL CLADDING (BRICK)



RECEIVED
OCT 05 2023
PLANNING DEPT.
DISTRICT OF SAANICH

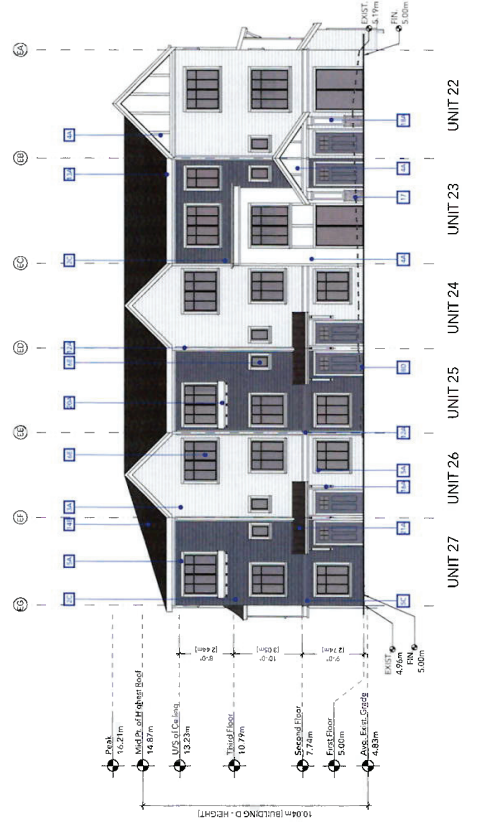
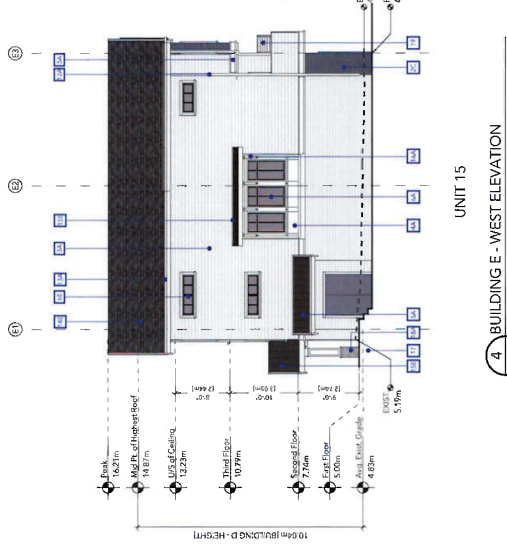


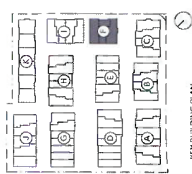
NO.	DATE	DESCRIPTION	BY	CHK	APP
1	22.09.2023	ISSUED FOR PERMIT	AK	AK	
2	22.09.2023	ISSUED FOR PERMIT	AK	AK	

NOTES:
1. THIS PLAN IS A DEVELOPMENT OF THE PERMITTED PLAN FOR THE ABOVE PROJECT.
2. THE PERMITTED PLAN IS THE BASIS FOR THIS PLAN.
3. THE PERMITTED PLAN IS THE BASIS FOR THIS PLAN.
4. THE PERMITTED PLAN IS THE BASIS FOR THIS PLAN.
5. THE PERMITTED PLAN IS THE BASIS FOR THIS PLAN.
6. THE PERMITTED PLAN IS THE BASIS FOR THIS PLAN.
7. THE PERMITTED PLAN IS THE BASIS FOR THIS PLAN.
8. THE PERMITTED PLAN IS THE BASIS FOR THIS PLAN.
9. THE PERMITTED PLAN IS THE BASIS FOR THIS PLAN.
10. THE PERMITTED PLAN IS THE BASIS FOR THIS PLAN.
11. THE PERMITTED PLAN IS THE BASIS FOR THIS PLAN.
12. THE PERMITTED PLAN IS THE BASIS FOR THIS PLAN.
13. THE PERMITTED PLAN IS THE BASIS FOR THIS PLAN.
14. THE PERMITTED PLAN IS THE BASIS FOR THIS PLAN.
15. THE PERMITTED PLAN IS THE BASIS FOR THIS PLAN.
16. THE PERMITTED PLAN IS THE BASIS FOR THIS PLAN.
17. THE PERMITTED PLAN IS THE BASIS FOR THIS PLAN.
18. THE PERMITTED PLAN IS THE BASIS FOR THIS PLAN.
19. THE PERMITTED PLAN IS THE BASIS FOR THIS PLAN.
20. THE PERMITTED PLAN IS THE BASIS FOR THIS PLAN.
21. THE PERMITTED PLAN IS THE BASIS FOR THIS PLAN.
22. THE PERMITTED PLAN IS THE BASIS FOR THIS PLAN.

PROJECT	
ABSTRACT	SEPTEMBER 22, 2023
GORGE RESIDENTIAL	SCALE
992 GORGE ROAD W.	
VICTORIA, BC	
PROJECT TITLE	
ELEVATIONS - BUILDING	
E	
PROJECT NO. / DATE:	21067 / SCALE
DATE:	
DRAWN BY:	DP-23
CHECKED BY:	
REVISION	1

MATERIAL / ITEM	COLOUR
1 CONCRETE	A
2 CERAMIC TILE	B
3 FIBRE CEMENT SIDING BOARD	C
4 FIBRE CEMENT SIDING BOARD	D
5 FIBRE CEMENT SIDING BOARD	E
6 FIBRE CEMENT SIDING BOARD	F
7 ALUMINIUM SIDING BOARD	G
8 ALUMINIUM SIDING BOARD	H
9 ALUMINIUM SIDING BOARD	I
10 ALUMINIUM SIDING BOARD	J
11 ALUMINIUM SIDING BOARD	K
12 ALUMINIUM SIDING BOARD	L
13 ALUMINIUM SIDING BOARD	M
14 ALUMINIUM SIDING BOARD	N
15 ALUMINIUM SIDING BOARD	O
16 ALUMINIUM SIDING BOARD	P
17 ALUMINIUM SIDING BOARD	Q
18 ALUMINIUM SIDING BOARD	R
19 ALUMINIUM SIDING BOARD	S
20 ALUMINIUM SIDING BOARD	T
21 ALUMINIUM SIDING BOARD	U
22 WALL ROOFING	V





RECEIVED
 OCT 05 2023
 PLANNING DEPT.
 DISTRICT OF SURREY



REV	DATE	DESCRIPTION	BY	APP
1	22.03.2023	ISSUED FOR I/P	AS	AU
2	05.10.2023	ISSUED FOR I/P	AS	AU

PROJECT NO. 2023-001
 992 SONGE ROAD W.
 VICTORIA, BC
 V8M 2G7

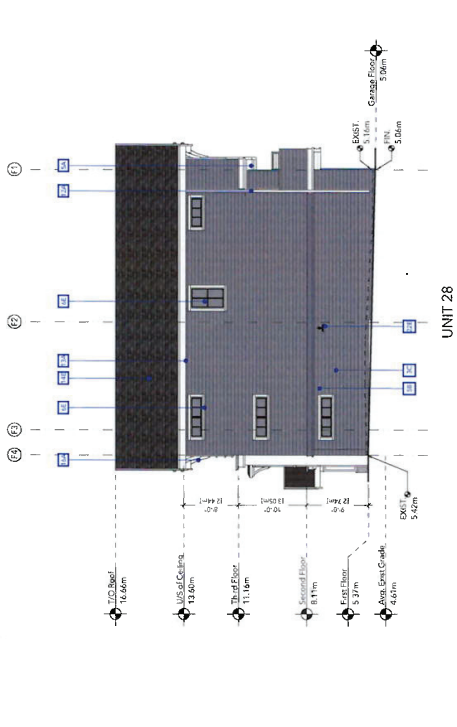
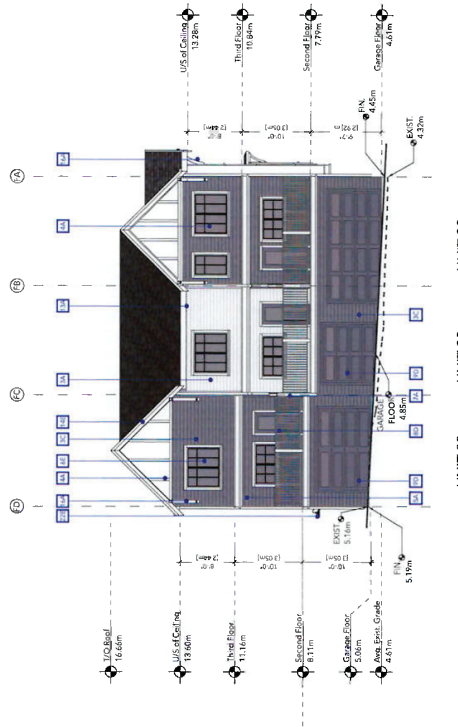
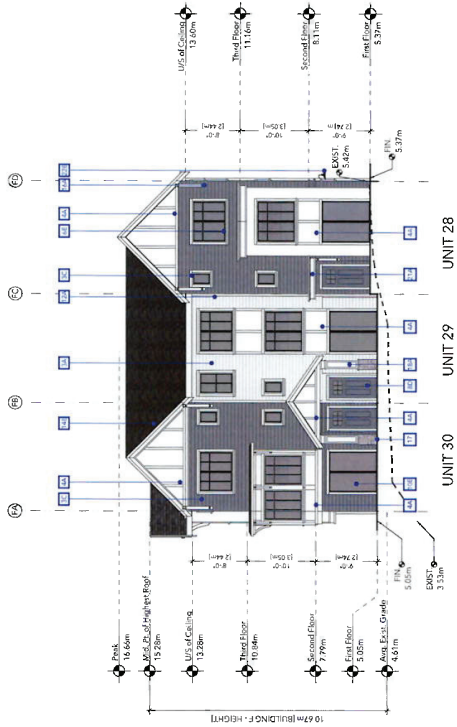
ABSTRACT
GORGE RESIDENTIAL
 992 SONGE ROAD W.
 VICTORIA, BC

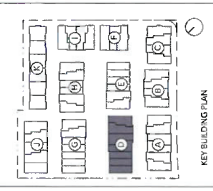
PROJECT NO.	21067
DATE	SEPTEMBER 22, 2023
SCALE	AS SHOWN
DRAWN BY	AS SHOWN
CHECKED BY	AS SHOWN
PROJECT TITLE	ELEVATIONS - BUILDING F
PROJECT NO.	21067
DATE	SEPTEMBER 22, 2023
SCALE	AS SHOWN
DRAWN BY	AS SHOWN
CHECKED BY	AS SHOWN
PROJECT TITLE	ELEVATIONS - BUILDING F
PROJECT NO.	21067
DATE	SEPTEMBER 22, 2023
SCALE	AS SHOWN
DRAWN BY	AS SHOWN
CHECKED BY	AS SHOWN
PROJECT TITLE	ELEVATIONS - BUILDING F
PROJECT NO.	21067
DATE	SEPTEMBER 22, 2023
SCALE	AS SHOWN
DRAWN BY	AS SHOWN
CHECKED BY	AS SHOWN
PROJECT TITLE	ELEVATIONS - BUILDING F

MATERIAL LEGEND

MATERIAL / ITEM	DESCRIPTION
1	CONCRETE
2	CLAY TILE
3	CLAY TILE
4	CLAY TILE
5	CLAY TILE
6	CLAY TILE
7	CLAY TILE
8	CLAY TILE
9	CLAY TILE
10	CLAY TILE
11	CLAY TILE
12	CLAY TILE
13	CLAY TILE
14	CLAY TILE
15	CLAY TILE
16	CLAY TILE
17	CLAY TILE
18	CLAY TILE
19	CLAY TILE
20	CLAY TILE
21	CLAY TILE
22	CLAY TILE

COLOUR	A	ACETIC WHITE
	B	CHARCOAL
	C	TRAVERTINE
	D	TRAVERTINE
	E	TRAVERTINE
	F	TRAVERTINE
	G	TRAVERTINE
	H	TRAVERTINE
	I	TRAVERTINE
	J	TRAVERTINE
	K	TRAVERTINE
	L	TRAVERTINE
	M	TRAVERTINE
	N	TRAVERTINE
	O	TRAVERTINE
	P	TRAVERTINE
	Q	TRAVERTINE
	R	TRAVERTINE
	S	TRAVERTINE
	T	TRAVERTINE
	U	TRAVERTINE
	V	TRAVERTINE
	W	TRAVERTINE
	X	TRAVERTINE
	Y	TRAVERTINE
	Z	TRAVERTINE





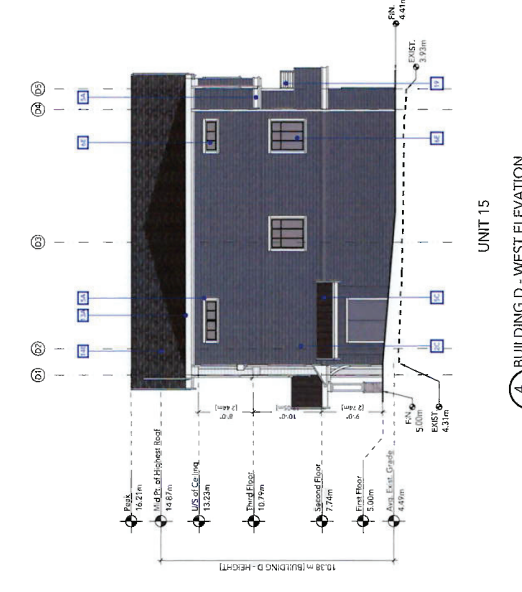
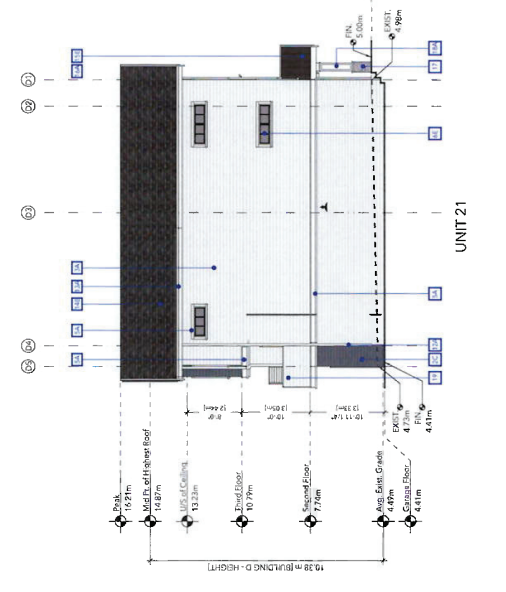
RECEIVED
OCT 05 2023
PLANNING DEPT.
DISTRICT OF SAANICH

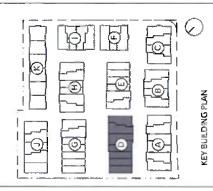


NO.	DATE	DESCRIPTION	BY	CHK
1	20.09.2023	ISSUED FOR APPROVAL	AVJ	
2	20.09.2023	ISSUED FOR APPROVAL	AVJ	

PROJECT TITLE		PROJECT NO.	DATE
ABSTRACT		21067	SEPTEMBER 22, 2023
GORGE RESIDENTIAL		DATE	AS ISSUED
992 GORGE ROAD W.		PROJECT NO.	DP-22
VICTORIA, BC		SECTION	1

MATERIAL / ITEM	COLOUR
1 CONCRETE	A
2 ASPHALT	B
3 BRICK	C
4 GYP. BOARD	D
5 INSULATION	E
6 METAL ROOFING	F
7 METAL SIDING	G
8 METAL TRIM	H
9 METAL FLASHING	I
10 METAL DOWNSPOUT	J
11 METAL GUTTER	K
12 METAL RAINWATER	L
13 METAL RAINWATER	M
14 METAL RAINWATER	N
15 METAL RAINWATER	O
16 METAL RAINWATER	P
17 METAL RAINWATER	Q
18 METAL RAINWATER	R
19 METAL RAINWATER	S
20 METAL RAINWATER	T
21 METAL RAINWATER	U
22 METAL RAINWATER	V





RECEIVED
OCT 05 2023
PLANNING DEPT.
DISTRICT OF SAANICH



REV	DATE	DESCRIPTION	BY	CHK
1	20.09.2023	ISSUED FOR PERIOD OF 10	AVJ	
2	20.09.2023	ISSUED FOR PERIOD OF 10	AVJ	

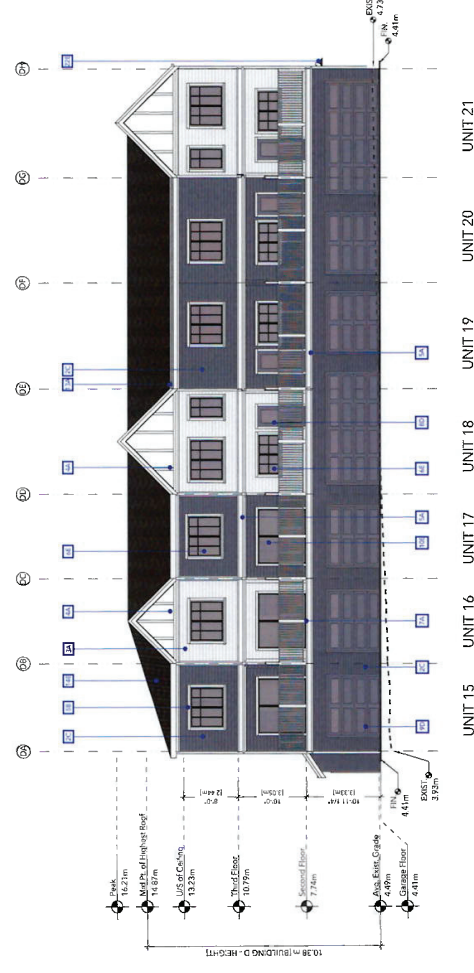
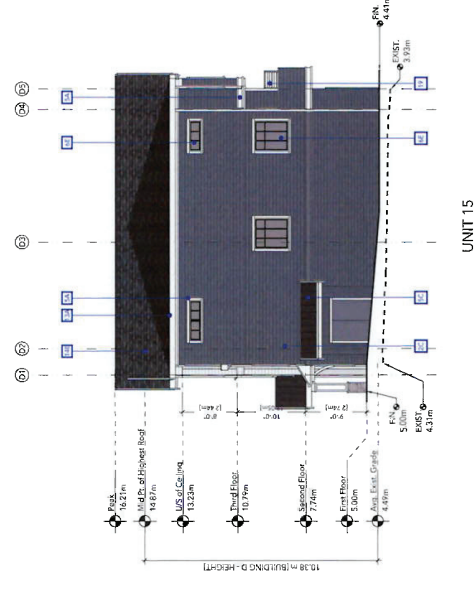
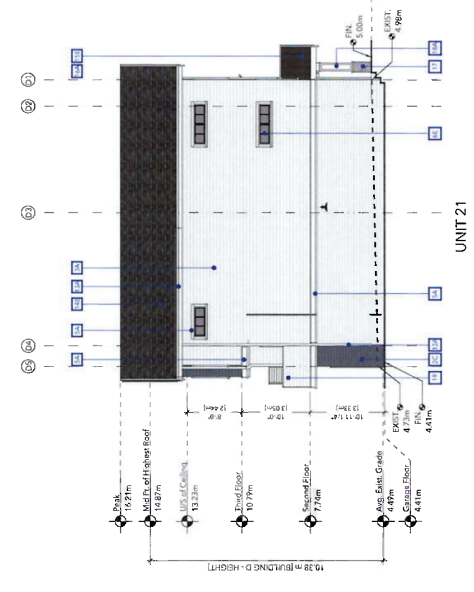
ABSTRACT
GORGE RESIDENTIAL
992 GORGE ROAD W,
VICTORIA, BC

ELEVATIONS - BUILDING D

PROJECT TITLE
DATE
21/06/23
DATE
SEPTEMBER 22, 2023
DRAWING NO.
DP-22
SECTION
1

MATERIAL LEGEND

MATERIAL / ITEM
1 CONCRETE
2 ASPHALT
3 BRICK
4 METAL CLADDING (STEEL)
5 METAL CLADDING (ALUMINUM)
6 METAL CLADDING (COPPER)
7 METAL CLADDING (ZINC)
8 METAL CLADDING (CERAMIC TILE)
9 METAL CLADDING (WOOD GRAIN)
10 METAL CLADDING (GLASS)
11 METAL CLADDING (STONE)
12 METAL CLADDING (BRICK)
13 METAL CLADDING (CONCRETE)
14 METAL CLADDING (METAL)
15 METAL CLADDING (STEEL)
16 METAL CLADDING (ALUMINUM)
17 METAL CLADDING (COPPER)
18 METAL CLADDING (ZINC)
19 METAL CLADDING (CERAMIC TILE)
20 METAL CLADDING (WOOD GRAIN)
21 METAL CLADDING (GLASS)
22 METAL CLADDING (STONE)
23 METAL CLADDING (BRICK)
24 METAL CLADDING (CONCRETE)
25 METAL CLADDING (METAL)
26 METAL CLADDING (STEEL)
27 METAL CLADDING (ALUMINUM)
28 METAL CLADDING (COPPER)
29 METAL CLADDING (ZINC)
30 METAL CLADDING (CERAMIC TILE)
31 METAL CLADDING (WOOD GRAIN)
32 METAL CLADDING (GLASS)
33 METAL CLADDING (STONE)
34 METAL CLADDING (BRICK)
35 METAL CLADDING (CONCRETE)
36 METAL CLADDING (METAL)
37 METAL CLADDING (STEEL)
38 METAL CLADDING (ALUMINUM)
39 METAL CLADDING (COPPER)
40 METAL CLADDING (ZINC)
41 METAL CLADDING (CERAMIC TILE)
42 METAL CLADDING (WOOD GRAIN)
43 METAL CLADDING (GLASS)
44 METAL CLADDING (STONE)
45 METAL CLADDING (BRICK)
46 METAL CLADDING (CONCRETE)
47 METAL CLADDING (METAL)
48 METAL CLADDING (STEEL)
49 METAL CLADDING (ALUMINUM)
50 METAL CLADDING (COPPER)
51 METAL CLADDING (ZINC)
52 METAL CLADDING (CERAMIC TILE)
53 METAL CLADDING (WOOD GRAIN)
54 METAL CLADDING (GLASS)
55 METAL CLADDING (STONE)
56 METAL CLADDING (BRICK)
57 METAL CLADDING (CONCRETE)
58 METAL CLADDING (METAL)
59 METAL CLADDING (STEEL)
60 METAL CLADDING (ALUMINUM)
61 METAL CLADDING (COPPER)
62 METAL CLADDING (ZINC)
63 METAL CLADDING (CERAMIC TILE)
64 METAL CLADDING (WOOD GRAIN)
65 METAL CLADDING (GLASS)
66 METAL CLADDING (STONE)
67 METAL CLADDING (BRICK)
68 METAL CLADDING (CONCRETE)
69 METAL CLADDING (METAL)
70 METAL CLADDING (STEEL)
71 METAL CLADDING (ALUMINUM)
72 METAL CLADDING (COPPER)
73 METAL CLADDING (ZINC)
74 METAL CLADDING (CERAMIC TILE)
75 METAL CLADDING (WOOD GRAIN)
76 METAL CLADDING (GLASS)
77 METAL CLADDING (STONE)
78 METAL CLADDING (BRICK)
79 METAL CLADDING (CONCRETE)
80 METAL CLADDING (METAL)
81 METAL CLADDING (STEEL)
82 METAL CLADDING (ALUMINUM)
83 METAL CLADDING (COPPER)
84 METAL CLADDING (ZINC)
85 METAL CLADDING (CERAMIC TILE)
86 METAL CLADDING (WOOD GRAIN)
87 METAL CLADDING (GLASS)
88 METAL CLADDING (STONE)
89 METAL CLADDING (BRICK)
90 METAL CLADDING (CONCRETE)
91 METAL CLADDING (METAL)
92 METAL CLADDING (STEEL)
93 METAL CLADDING (ALUMINUM)
94 METAL CLADDING (COPPER)
95 METAL CLADDING (ZINC)
96 METAL CLADDING (CERAMIC TILE)
97 METAL CLADDING (WOOD GRAIN)
98 METAL CLADDING (GLASS)
99 METAL CLADDING (STONE)
100 METAL CLADDING (BRICK)



RECEIVED

OCT 05 2023
PLANNING DEPT.
DISTRICT OF SAANICH



NO.	REVISION	DATE	DESCRIPTION	BY	CHK	APP
2	22.2023		ISSUED FOR PERMIT	AK	AK	AK
1	19.2023		ISSUED FOR EIP	AK	AK	AK
REV	DATE	DESCRIPTION	BY	CHK	APP	

I AM A MEMBER OF THE REGISTERED ARCHITECTS OF BRITISH COLUMBIA. I AM NOT PROVIDING ARCHITECTURAL SERVICES TO ANY OTHER CLIENTS AT THE SAME TIME AS I AM PROVIDING THESE SERVICES TO YOU. I AM NOT PROVIDING ARCHITECTURAL SERVICES TO ANY OTHER CLIENTS AT THE SAME TIME AS I AM PROVIDING THESE SERVICES TO YOU. I AM NOT PROVIDING ARCHITECTURAL SERVICES TO ANY OTHER CLIENTS AT THE SAME TIME AS I AM PROVIDING THESE SERVICES TO YOU.

108.00m (BUILDING D - HEIGHT)
 10.00m (BUILDING D - HEIGHT)

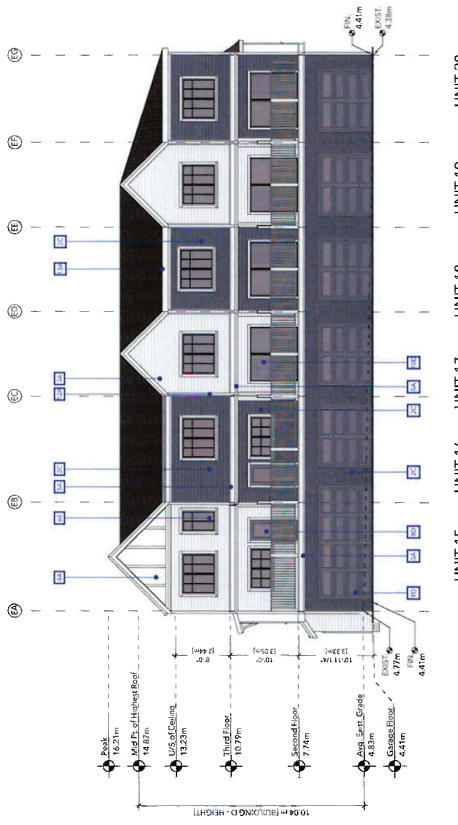
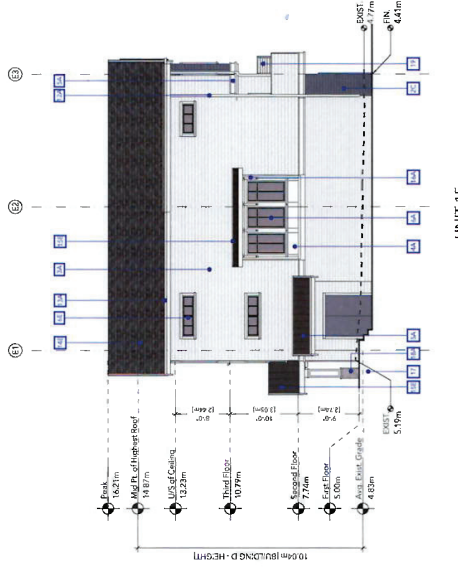
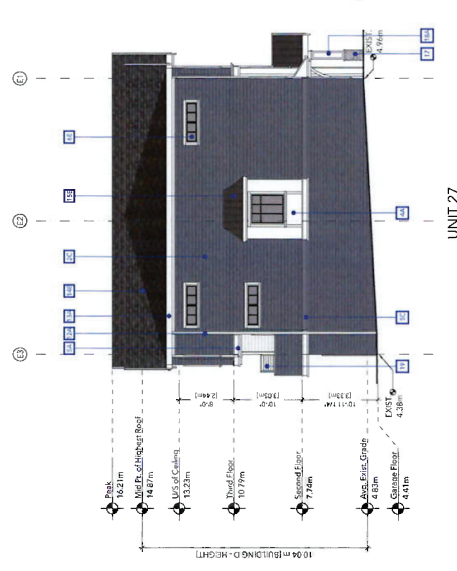
PROJECT ABSTRACT GORGE RESIDENTIAL 992 GORGE ROAD W, VICTORIA, BC	
PROJECT NO. 21067	DATE SEPTEMBER 22, 2023
PROJECT TITLE ELEVATIONS - BUILDING E	SCALE AS SHOWN
PROJECT NO. 21067	SCALE AS SHOWN
PROJECT NO. 21067	SCALE AS SHOWN
PROJECT NO. 21067	SCALE AS SHOWN

MATERIAL / ITEM

1	CONCRETE
2	ASBESTIC WHITE
3	PERFORATED STONE BRICKS
4	PERFORATED STONE BRICKS
5	PERFORATED STONE BRICKS
6	PERFORATED STONE BRICKS
7	PERFORATED STONE BRICKS
8	PERFORATED STONE BRICKS
9	PERFORATED STONE BRICKS
10	PERFORATED STONE BRICKS
11	PERFORATED STONE BRICKS
12	PERFORATED STONE BRICKS
13	PERFORATED STONE BRICKS
14	PERFORATED STONE BRICKS
15	PERFORATED STONE BRICKS
16	PERFORATED STONE BRICKS
17	PERFORATED STONE BRICKS
18	PERFORATED STONE BRICKS
19	PERFORATED STONE BRICKS
20	PERFORATED STONE BRICKS
21	PERFORATED STONE BRICKS
22	PERFORATED STONE BRICKS

COLOUR

A	ASBESTIC WHITE
B	PERFORATED STONE BRICKS
C	PERFORATED STONE BRICKS
D	PERFORATED STONE BRICKS
E	PERFORATED STONE BRICKS



RECEIVED
OCT 05 2023
PLANNING DEPT.
DISTRICT OF SURREY



REV	DATE	DESCRIPTION	BY	APP
1	10/05/23	ISSUED FOR PERM	AS	AU
2	10/05/23	ISSUED FOR PERM	AS	AU

PROJECT: ABSTRACT DEVELOPMENT
 992 SONGE ROAD W.
 VICTORIA, BC

PROJECT NO: 21067
 SCALE: AS SHOWN
 DATE: SEPTEMBER 22, 2023

PROJECT TITLE: ABSTRACT DEVELOPMENT
 ELEVATIONS - BUILDING F

OWNER: MGBA
 DRAWN BY: AS
 CHECKED BY: AS
 SCALE: 1:100

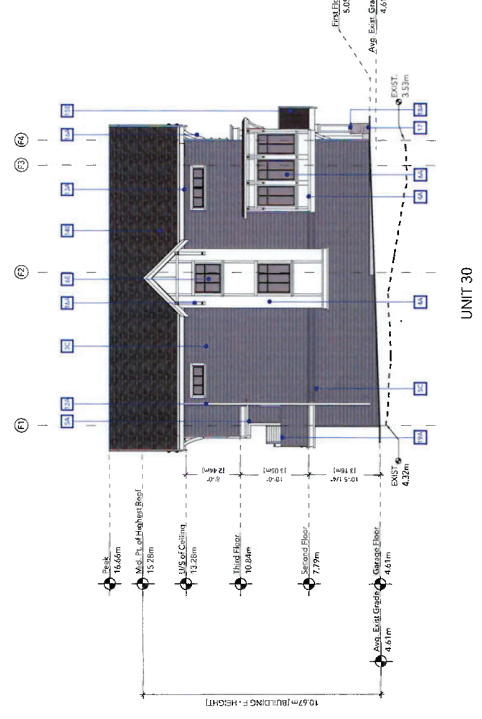
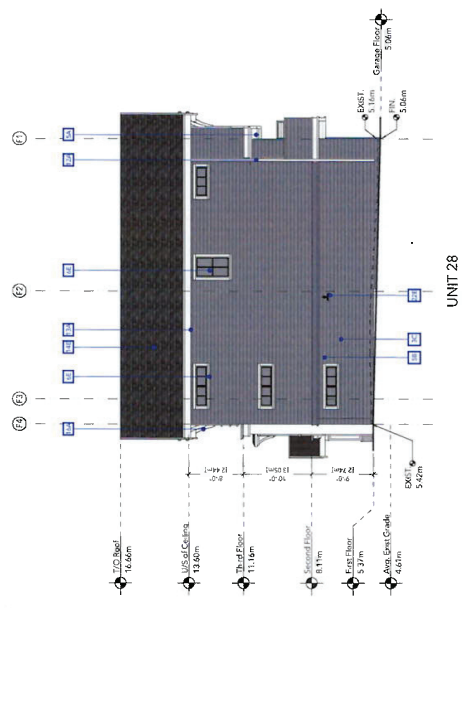
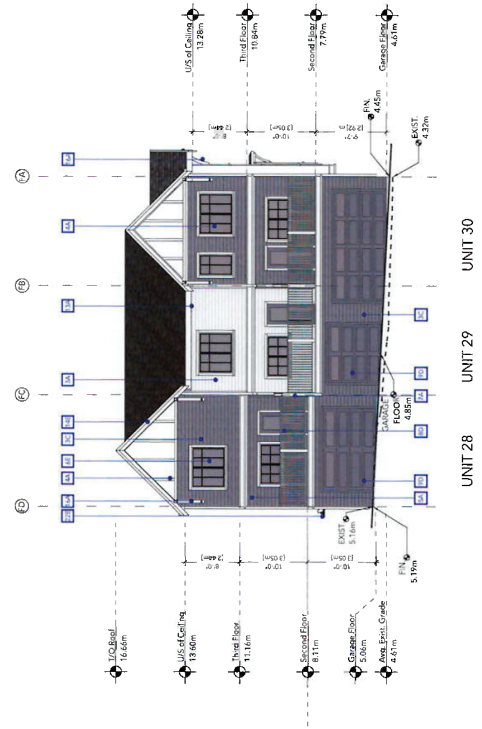
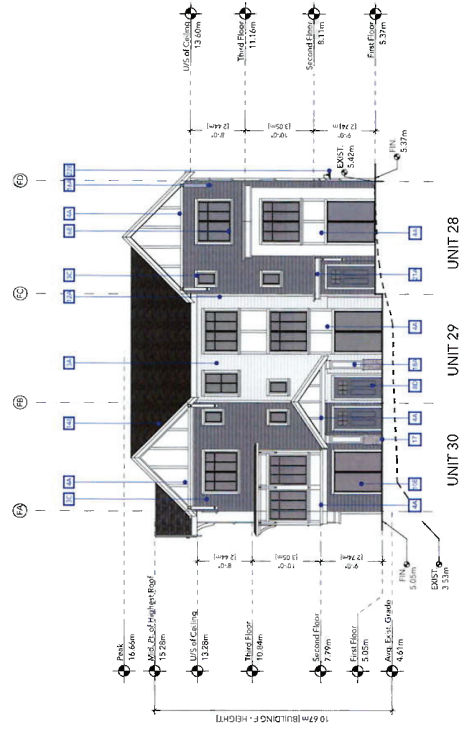
REVISIONS: 1
 SHEET NO: DP-24

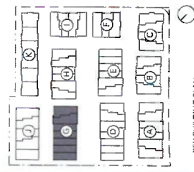
MATERIAL LEGEND

MATERIAL / ITEM	DESCRIPTION
1	CONCRETE
2	BRICK
3	CLAY TILE
4	WOOD SHAKES
5	WOOD SHAKES
6	WOOD SHAKES
7	WOOD SHAKES
8	WOOD SHAKES
9	WOOD SHAKES
10	WOOD SHAKES
11	WOOD SHAKES
12	WOOD SHAKES
13	WOOD SHAKES
14	WOOD SHAKES
15	WOOD SHAKES
16	WOOD SHAKES
17	WOOD SHAKES
18	WOOD SHAKES
19	WOOD SHAKES
20	WOOD SHAKES
21	WOOD SHAKES
22	WOOD SHAKES

COLOUR

A	ACETIC WHITE
B	ACETIC WHITE
C	ACETIC WHITE
D	ACETIC WHITE
E	ACETIC WHITE





RECEIVED
OCT 05 2023
PLANNING DEPT.
DISTRICT OF SURREY



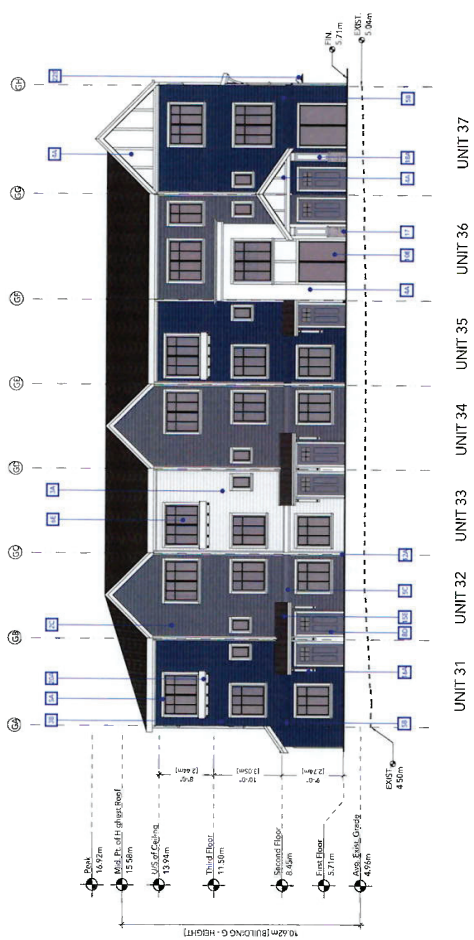
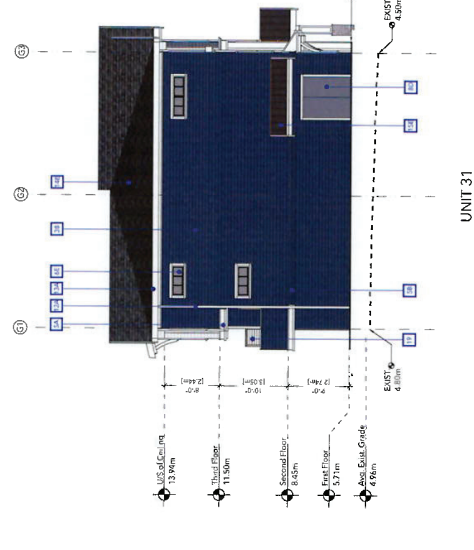
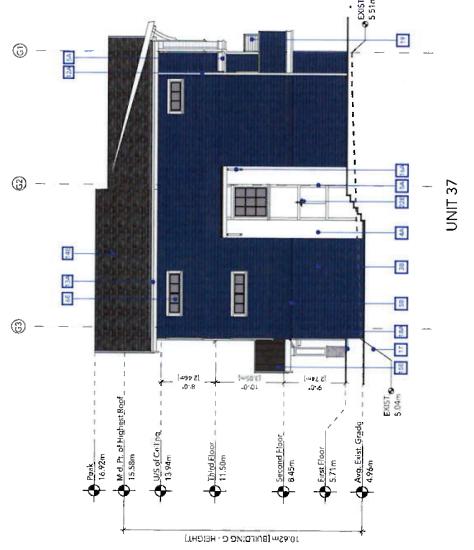
NO.	DATE	DESCRIPTION	BY	APP.
1	22.09.2023	ISSUED FOR PERMITS	AR	AU
2	22.09.2023	ISSUED FOR CONSTRUCTION	AR	AR

ABSTRACT
GORGES RESIDENTIAL
992 GORGE ROAD W.
VICTORIA, BC

ELEVATIONS - BUILDING G

PROJECT NO: 21067
SCALE: 1:100
DATE: SEPTEMBER 22, 2023

COLOUR
A: ACETIC WHITE
B: TITAN GRAY
C: TITAN GRAY
D: IMPERIAL BLACK



MATERIAL LEGEND

MATERIAL / ITEM	DESCRIPTION
1	CONCRETE
2	BRICK
3	CLAY TILE
4	WOOD SHAKES
5	WOOD SHAKES
6	WOOD SHAKES
7	WOOD SHAKES
8	WOOD SHAKES
9	WOOD SHAKES
10	WOOD SHAKES
11	WOOD SHAKES
12	WOOD SHAKES
13	WOOD SHAKES
14	WOOD SHAKES
15	WOOD SHAKES
16	WOOD SHAKES
17	WOOD SHAKES
18	WOOD SHAKES
19	WOOD SHAKES
20	WOOD SHAKES
21	WOOD SHAKES
22	WOOD SHAKES



RECEIVED
OCT 05 2023
PLANNING DEPT.
DISTRICT OF SHANICHI



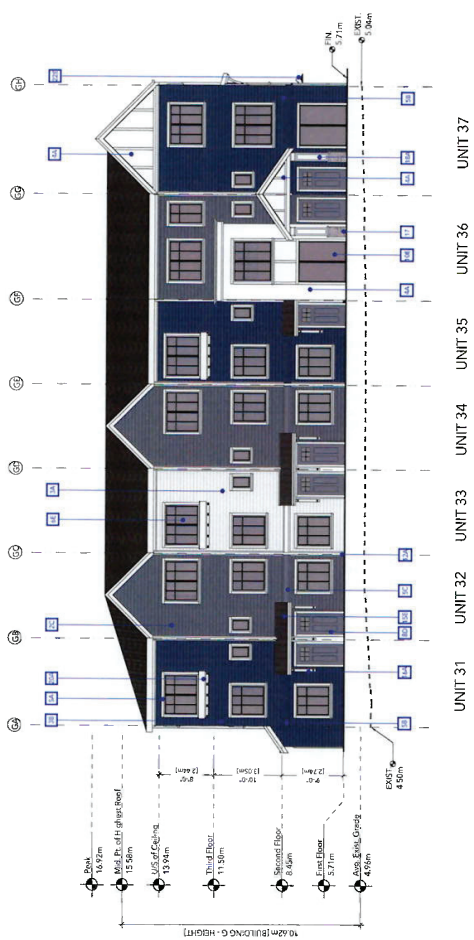
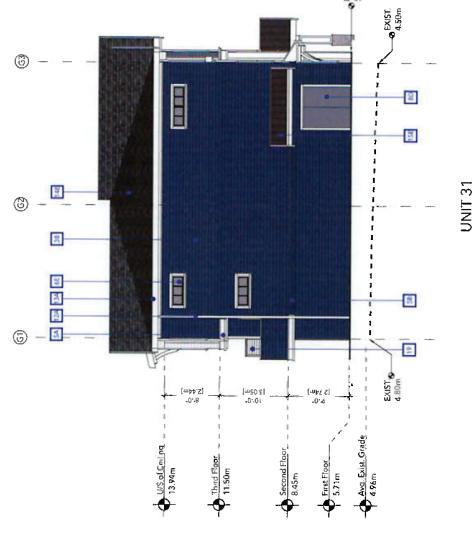
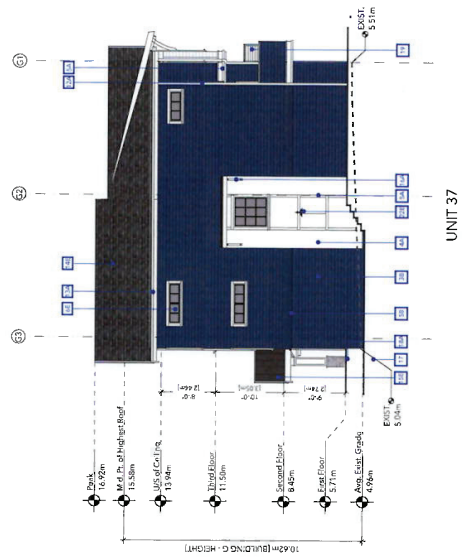
NO.	DATE	DESCRIPTION	BY	APP.
1	22.09.2023	ISSUED FOR PERMITS	KL	KL
2	22.09.2023	ISSUED FOR ENCL. OF PERMITS	KL	KL

ABSTRACT
GORGES RESIDENTIAL
992 GORGE ROAD W.
VICTORIA, BC

ELEVATIONS - BUILDING G

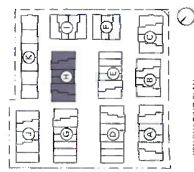
PROJECT NO: 21067
SCALE: 1:100
DATE: SEPTEMBER 22, 2023

COLOUR
A: ACETIC WHITE
B: TITANUM GREY
C: TITANUM GREY
D: IMPERIAL BLACK



MATERIAL LEGEND

MATERIAL / ITEM	DESCRIPTION
1	CONCRETE
2	PAINT
3	BRICK
4	GLASS
5	WOOD
6	ROOFING
7	ROOFING
8	ROOFING
9	ROOFING
10	ROOFING
11	ROOFING
12	ROOFING
13	ROOFING
14	ROOFING
15	ROOFING
16	ROOFING
17	ROOFING
18	ROOFING
19	ROOFING
20	ROOFING
21	ROOFING
22	ROOFING



RECEIVED
OCT 05 2023
PLANNING DEPT.
CITY OF SHELTON



NO.	DATE	ISSUED FOR	BY	DATE	DESCRIPTION
1	29.08.2023	ISSUED FOR PERMIT	AR	AU	
2	01.10.2023	REVISED FOR PERMIT	AR	AU	

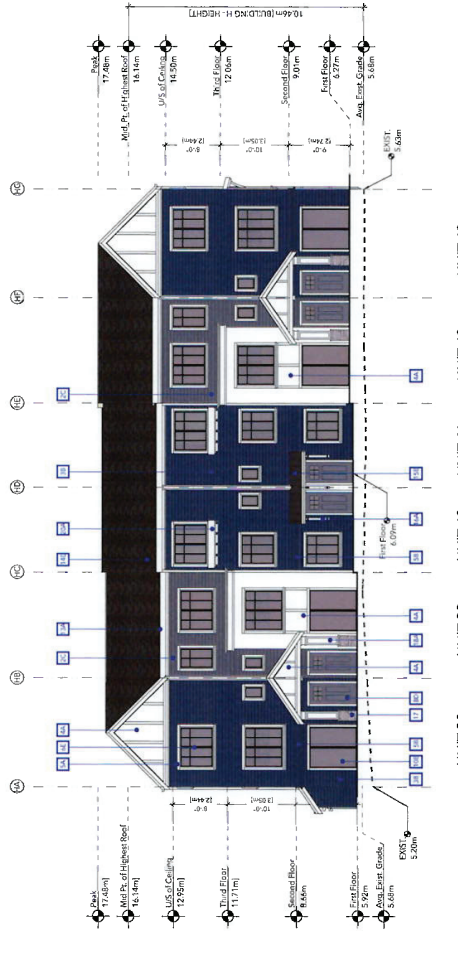
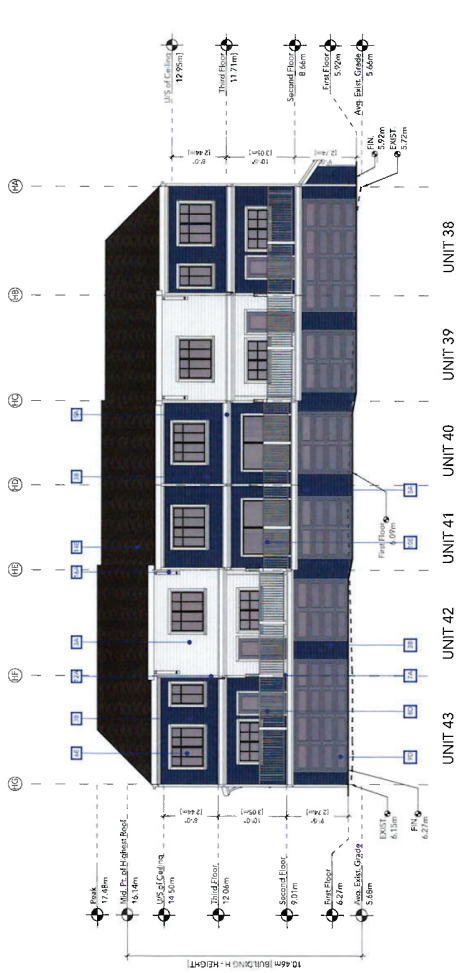
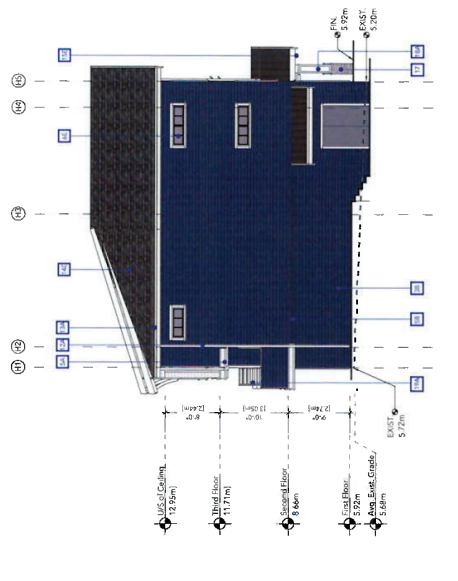
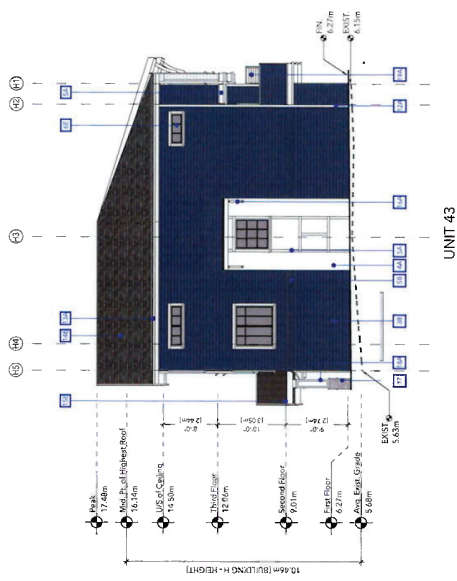
PROJECT: ABSTRACT DEVELOPMENTS

PROJECT TITLE:
**ABSTRACT
GORGE RESIDENTIAL
992 GORGE ROAD W,
VICTORIA, BC**

ELEVATIONS - BUILDING
H

PROJECT NO:	21057
DATE:	SEPTEMBER 22, 2023
DRAWN BY:	DP-29
CHECKED BY:	
SCALE:	1:100

MATERIAL / ITEM	COLOUR
1 CONCRETE	A
2 GYP BOARD	B
3 FIBRE CEMENT SHEET (SLOPED ROOF)	C
4 FIBRE CEMENT SHEET (FLAT ROOF)	D
5 FIBRE CEMENT SHEET (WALL)	E
6 ALUMINIUM QUADRANTAL SYSTEM	
7 ALUMINIUM QUADRANTAL SYSTEM	
8 POLYURETHANE INSULATION	
9 POLYURETHANE INSULATION	
10 POLYURETHANE INSULATION	
11 POLYURETHANE INSULATION	
12 POLYURETHANE INSULATION	
13 POLYURETHANE INSULATION	
14 POLYURETHANE INSULATION	
15 POLYURETHANE INSULATION	
16 POLYURETHANE INSULATION	
17 POLYURETHANE INSULATION	
18 POLYURETHANE INSULATION	
19 POLYURETHANE INSULATION	
20 POLYURETHANE INSULATION	
21 POLYURETHANE INSULATION	
22 WALL MOUNTED GORGE INDEK LAMP	





NO.	DATE	DESCRIPTION	BY	CHK.
1	22.09.2023	ISSUED FOR PERMIT	MMK	MMK
2	22.09.2023	ISSUED FOR RFP	MMK	MMK

PROJECT
ABSTRACT
GORGE RESIDENTIAL
 992 GORGE ROAD W.
 VICTORIA, BC

SHEET TITLE
ELEVATIONS - BUILDING I

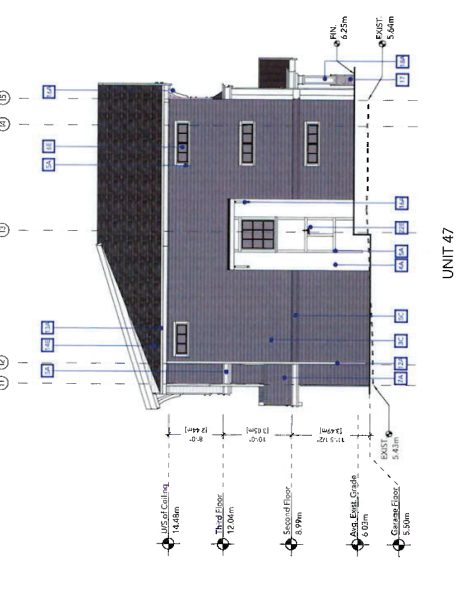
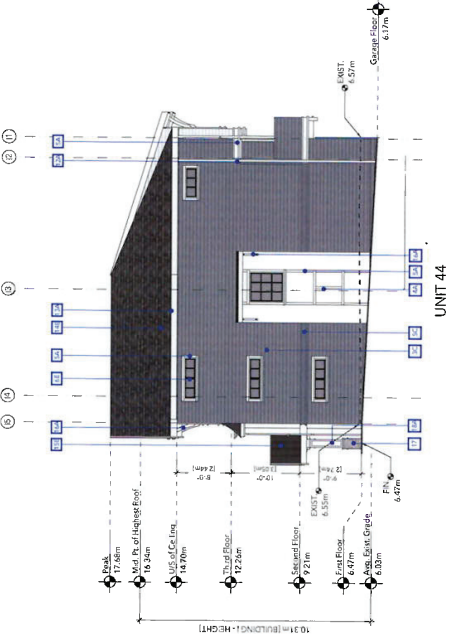
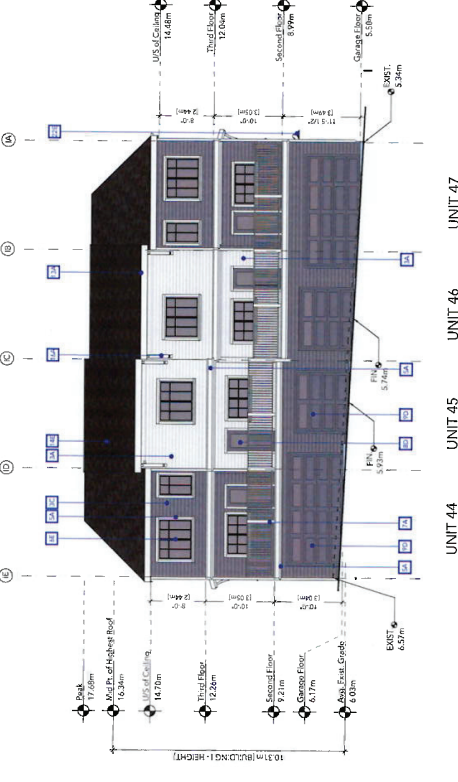
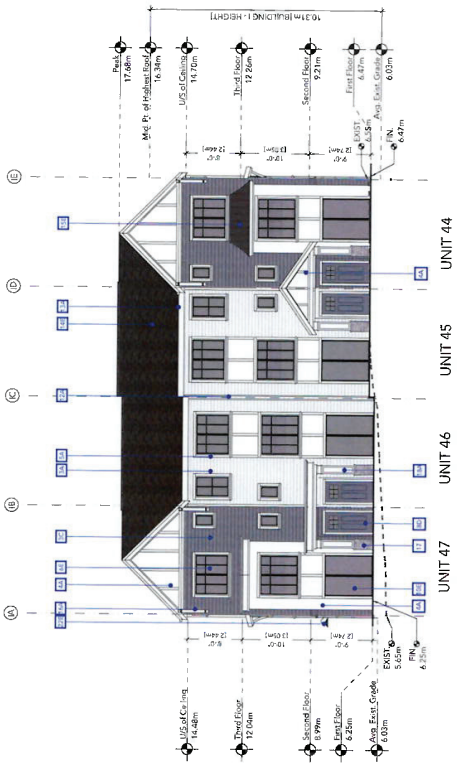
PROJECT NO. / DRAWING NO.
 21057 / 21057

DATE OF ISSUE
 SEPTEMBER 22, 2023

SCALE
 AS SHOWN

DRAWING NO.
DP-27

REGION
 1



MATERIAL / ITEM

- CONCRETE
- PAINT
- BRICK
- GLASS
- ALUMINUM
- STEEL
- WOOD
- ROOFING
- LANDSCAPING
- MECHANICAL
- ELECTRICAL
- PLUMBING
- HEATING
- Cooling
- Lighting
- Security
- Fire
- Sound
- Accessibility
- Other

COLOUR

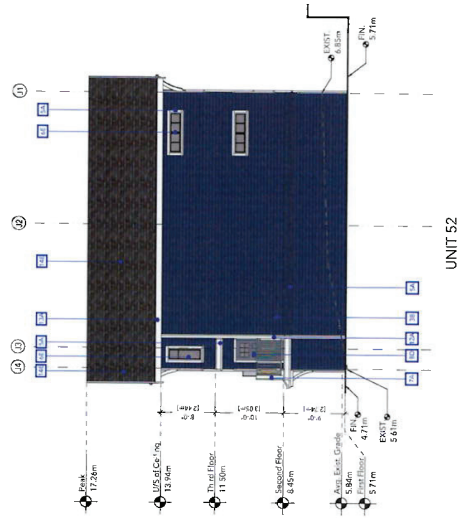
- ARCHITECT'S WHITE
- TRAVERTINE GREY
- BLACK
- ROSHARIFT BLACK



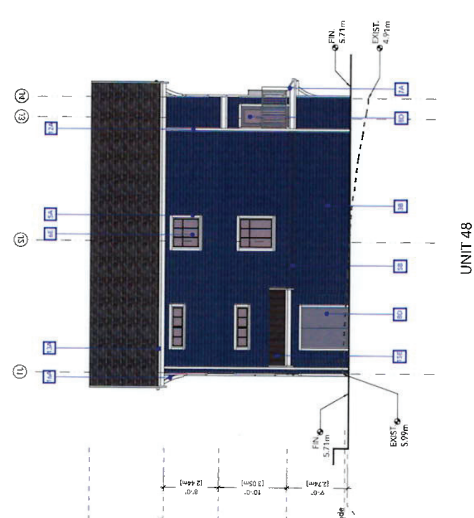
NO.	DATE	DESCRIPTION	BY	CHK
1	22.10.2023	ISSUED FOR PERMIT	AM	AU
2	22.10.2023	ISSUED FOR PERMIT	AM	AU

PROJECT	
ABSTRACT GORGE RESIDENTIAL 992 GORGE ROAD W. VICTORIA, BC	
SHEET TITLE	
ELEVATIONS - BUILDING J	
PROJECT NO.	21067
DATE	SEPTEMBER 22, 2023
SCALE	AS SHOWN
DESIGNED BY	AM
CHECKED BY	AU
DATE	SEPTEMBER 22, 2023
SCALE	AS SHOWN

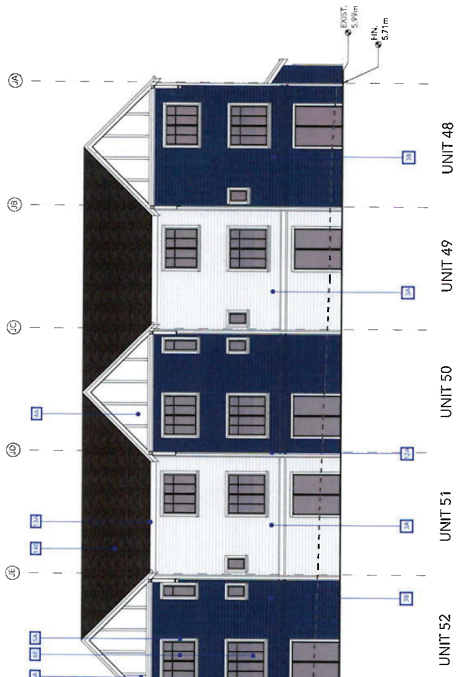
MATERIAL / ITEM	COLOUR
1. CONCRETE	A
2. BRICK	B
3. EXTERIOR STONE	C
4. STONE	D
5. METAL ROOF	E
6. METAL ROOF SYSTEM	F
7. METAL ROOF SYSTEM	G
8. METAL ROOF SYSTEM	H
9. METAL ROOF SYSTEM	I
10. METAL ROOF SYSTEM	J
11. METAL ROOF SYSTEM	K
12. METAL ROOF SYSTEM	L
13. METAL ROOF SYSTEM	M
14. METAL ROOF SYSTEM	N
15. METAL ROOF SYSTEM	O
16. METAL ROOF SYSTEM	P
17. METAL ROOF SYSTEM	Q
18. METAL ROOF SYSTEM	R
19. METAL ROOF SYSTEM	S
20. METAL ROOF SYSTEM	T
21. METAL ROOF SYSTEM	U
22. METAL ROOF SYSTEM	V



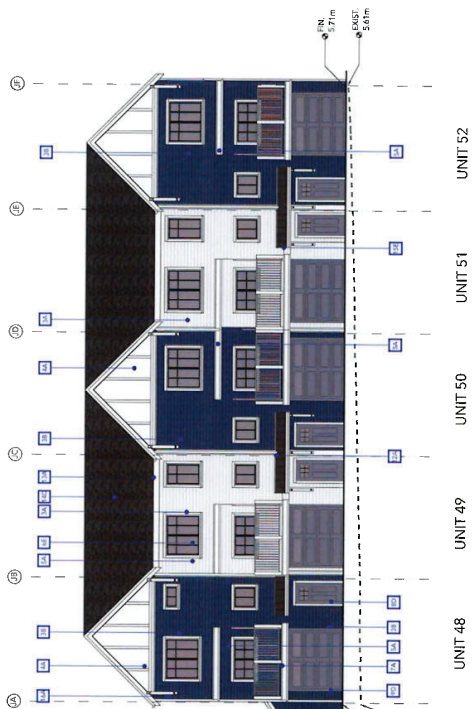
2. BUILDING J - EAST ELEVATION
DP-29 SCALE 1:100



4. BUILDING J - WEST ELEVATION
DP-29 SCALE 1:100



1. BUILDING J - NORTH ELEVATION
DP-29 SCALE 1:100



3. BUILDING J - SOUTH ELEVATION
DP-29 SCALE 1:100



NO.	DATE	DESCRIPTION	BY	CHK	APP
1	22.09.2023	ISSUED FOR APPROVAL	AB	AB	
2	22.09.2023	ISSUED FOR APPROVAL	AB	AB	

PROJECT

**ABSTRACT
GORGE RESIDENTIAL**
992 GORGE ROAD W,
VICTORIA, BC

SHEET TITLE

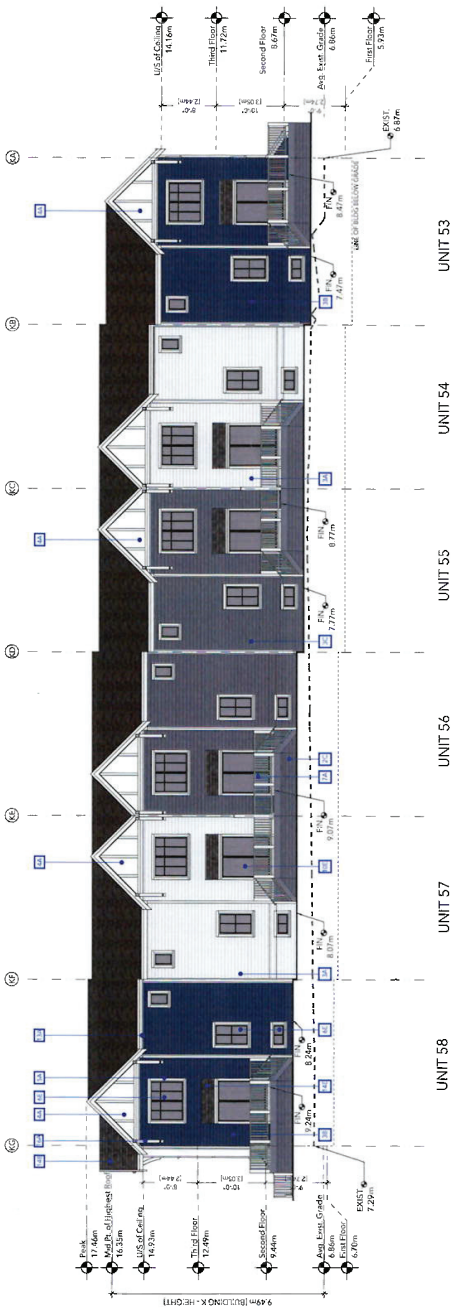
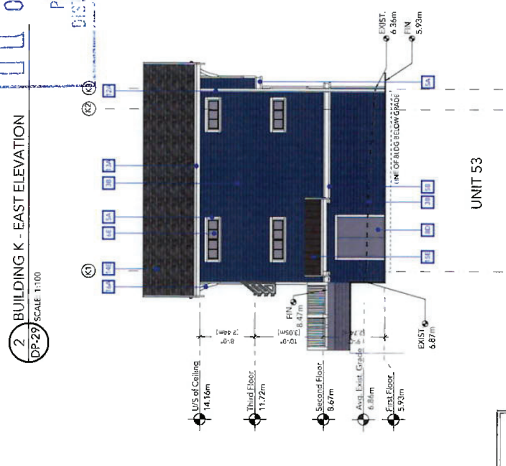
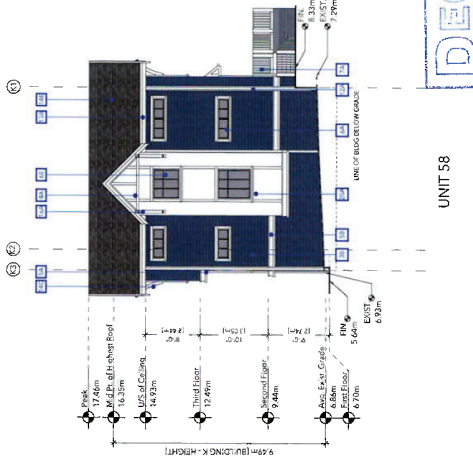
ELEVATIONS - BUILDING K

PROJECT NO. / ISSUE DATE / SEPTEMBER 22, 2023

21057 SCALE

DATE

1



MATERIAL / ITEM	COLOUR
1 CONCRETE	1
2 ASPHALT	2
3 GYPSONUM BOARD	3
4 FIRE RATED GYPSUM BOARD	4
5 FIBRE CEMENT CEILING BOARD	5
6 1/2" X 6" EXTERIOR GYPSUM BOARD	6
7 1/2" X 6" INTERIOR GYPSUM BOARD	7
8 1/2" X 6" GYPSUM BOARD	8
9 1/2" X 6" GYPSUM BOARD	9
10 1/2" X 6" GYPSUM BOARD	10
11 1/2" X 6" GYPSUM BOARD	11
12 1/2" X 6" GYPSUM BOARD	12
13 1/2" X 6" GYPSUM BOARD	13
14 1/2" X 6" GYPSUM BOARD	14
15 1/2" X 6" GYPSUM BOARD	15
16 1/2" X 6" GYPSUM BOARD	16
17 1/2" X 6" GYPSUM BOARD	17
18 1/2" X 6" GYPSUM BOARD	18
19 1/2" X 6" GYPSUM BOARD	19
20 1/2" X 6" GYPSUM BOARD	20
21 1/2" X 6" GYPSUM BOARD	21
22 1/2" X 6" GYPSUM BOARD	22
23 1/2" X 6" GYPSUM BOARD	23
24 1/2" X 6" GYPSUM BOARD	24
25 1/2" X 6" GYPSUM BOARD	25
26 1/2" X 6" GYPSUM BOARD	26
27 1/2" X 6" GYPSUM BOARD	27
28 1/2" X 6" GYPSUM BOARD	28
29 1/2" X 6" GYPSUM BOARD	29
30 1/2" X 6" GYPSUM BOARD	30
31 1/2" X 6" GYPSUM BOARD	31
32 1/2" X 6" GYPSUM BOARD	32
33 1/2" X 6" GYPSUM BOARD	33
34 1/2" X 6" GYPSUM BOARD	34
35 1/2" X 6" GYPSUM BOARD	35
36 1/2" X 6" GYPSUM BOARD	36
37 1/2" X 6" GYPSUM BOARD	37
38 1/2" X 6" GYPSUM BOARD	38
39 1/2" X 6" GYPSUM BOARD	39
40 1/2" X 6" GYPSUM BOARD	40
41 1/2" X 6" GYPSUM BOARD	41
42 1/2" X 6" GYPSUM BOARD	42
43 1/2" X 6" GYPSUM BOARD	43
44 1/2" X 6" GYPSUM BOARD	44
45 1/2" X 6" GYPSUM BOARD	45
46 1/2" X 6" GYPSUM BOARD	46
47 1/2" X 6" GYPSUM BOARD	47
48 1/2" X 6" GYPSUM BOARD	48
49 1/2" X 6" GYPSUM BOARD	49
50 1/2" X 6" GYPSUM BOARD	50
51 1/2" X 6" GYPSUM BOARD	51
52 1/2" X 6" GYPSUM BOARD	52
53 1/2" X 6" GYPSUM BOARD	53
54 1/2" X 6" GYPSUM BOARD	54
55 1/2" X 6" GYPSUM BOARD	55
56 1/2" X 6" GYPSUM BOARD	56
57 1/2" X 6" GYPSUM BOARD	57
58 1/2" X 6" GYPSUM BOARD	58
59 1/2" X 6" GYPSUM BOARD	59
60 1/2" X 6" GYPSUM BOARD	60
61 1/2" X 6" GYPSUM BOARD	61
62 1/2" X 6" GYPSUM BOARD	62
63 1/2" X 6" GYPSUM BOARD	63
64 1/2" X 6" GYPSUM BOARD	64
65 1/2" X 6" GYPSUM BOARD	65
66 1/2" X 6" GYPSUM BOARD	66
67 1/2" X 6" GYPSUM BOARD	67
68 1/2" X 6" GYPSUM BOARD	68
69 1/2" X 6" GYPSUM BOARD	69
70 1/2" X 6" GYPSUM BOARD	70
71 1/2" X 6" GYPSUM BOARD	71
72 1/2" X 6" GYPSUM BOARD	72
73 1/2" X 6" GYPSUM BOARD	73
74 1/2" X 6" GYPSUM BOARD	74
75 1/2" X 6" GYPSUM BOARD	75
76 1/2" X 6" GYPSUM BOARD	76
77 1/2" X 6" GYPSUM BOARD	77
78 1/2" X 6" GYPSUM BOARD	78
79 1/2" X 6" GYPSUM BOARD	79
80 1/2" X 6" GYPSUM BOARD	80
81 1/2" X 6" GYPSUM BOARD	81
82 1/2" X 6" GYPSUM BOARD	82
83 1/2" X 6" GYPSUM BOARD	83
84 1/2" X 6" GYPSUM BOARD	84
85 1/2" X 6" GYPSUM BOARD	85
86 1/2" X 6" GYPSUM BOARD	86
87 1/2" X 6" GYPSUM BOARD	87
88 1/2" X 6" GYPSUM BOARD	88
89 1/2" X 6" GYPSUM BOARD	89
90 1/2" X 6" GYPSUM BOARD	90
91 1/2" X 6" GYPSUM BOARD	91
92 1/2" X 6" GYPSUM BOARD	92
93 1/2" X 6" GYPSUM BOARD	93
94 1/2" X 6" GYPSUM BOARD	94
95 1/2" X 6" GYPSUM BOARD	95
96 1/2" X 6" GYPSUM BOARD	96
97 1/2" X 6" GYPSUM BOARD	97
98 1/2" X 6" GYPSUM BOARD	98
99 1/2" X 6" GYPSUM BOARD	99
100 1/2" X 6" GYPSUM BOARD	100