



Cuthbert Holmes Park & Tillicum Park

Welcome to the Park!

This park and the Colquitz River are home to many creatures. Protect them and the habitat they depend on:

- Stay on designated trails
- Avoid disturbing wildlife
- Keep dogs on designated trails and out of the river

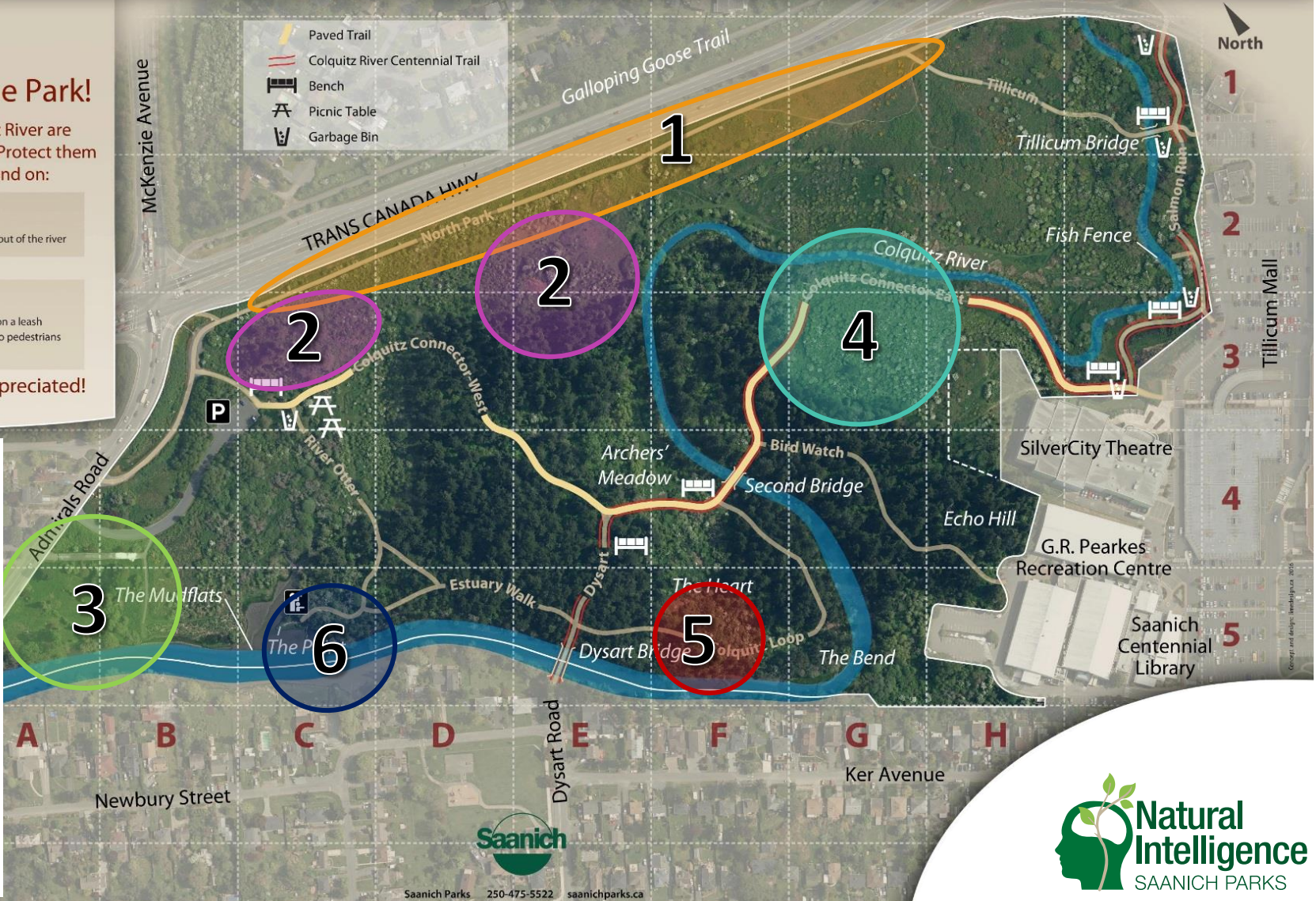
Respect all visitors:

- Share the trail
- Clean up after your dog
- Always keep dogs under control or on a leash
- Cyclists mind your speed and yield to pedestrians
- Smoking not permitted

Your cooperation is appreciated!

PROJECTS

- 1 – Stumps with Purpose
- 2 – New Ponds and Wetlands
- 3 – Estuary Fingers
- 4 – Riparian Restoration
- 5 – Invasive Species removal and planting
- 6 – Wetland and Habitat Protection



Saanich Parks 250-475-5522 saanichparks.ca



PROJECTS



1

Stumps with Purpose

What? Placement of logs, stumps, other woody debris, plants and boulders on the berm slopes.

Why? To slow water as it drains off the highway berm, and provide habitat diversity.



2

New Ponds and Wetlands

What? Creation of several ponds and wetland habitats.

Why? To capture extra run-off from the highway and residential area and provide a fresh water habitat for diverse wildlife. Water has been treated in the retention pond in the off-ramp.

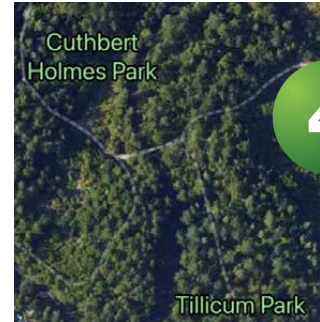


3

Estuary Fingers

What? Side channels have been created along the river estuary.

Why? To enhance safe and diverse estuarine habitat along the river edges, for small fish and other creatures seeking refuge.



4

Riparian Restoration

What? Trail relocation away from the river, bank area replanted with groves of trembling aspen and other native species and 200 meters of instream fish habitat restored.

Why? Trail relocation prevents flooding and promotes restoration in the river bank zone. The replacement of English Hawthorn with Trembling Aspen increases forest diversity. Instream habitat improvements increase stream health for salmon and other species.



5

Invasive Species Removal and Planting

What? Ongoing ecosystem restoration, and community stewardship opportunities in forested areas of the park.

Why? Promotes a balanced and diverse ecosystem and engages the community in helping care for the park.



6

Wetland Habitat Protection

What? Native plants in riparian area. In stream work to improve wildlife habitat. Creation of “bird blind” for a glimpse into estuary life is planned.

Why? Improvements of river health, wildlife habitat, and for nature appreciation and education.