



Kings Community Nature Space Engagement No. 2 - Virtual

December 6, 2022

6:30 – 8:00pm



Agenda

6:30pm



8:00pm

- Welcome and Opening Comments
- Background & What We Heard
- Discussions: Break Out Groups
 - Draft Vision
 - Draft Goals
 - Management Scenarios
- Closing and Next Steps

Background

1950's

- BC Hydro purchased former farmland

2018

- BC Hydro announced intention to sell the land
- The community campaigned for the property to become a park and began fundraising

2019

- The District of Saanich acquired the property
- Fundraising, private donations, and local government contributions supported the purchase

Background

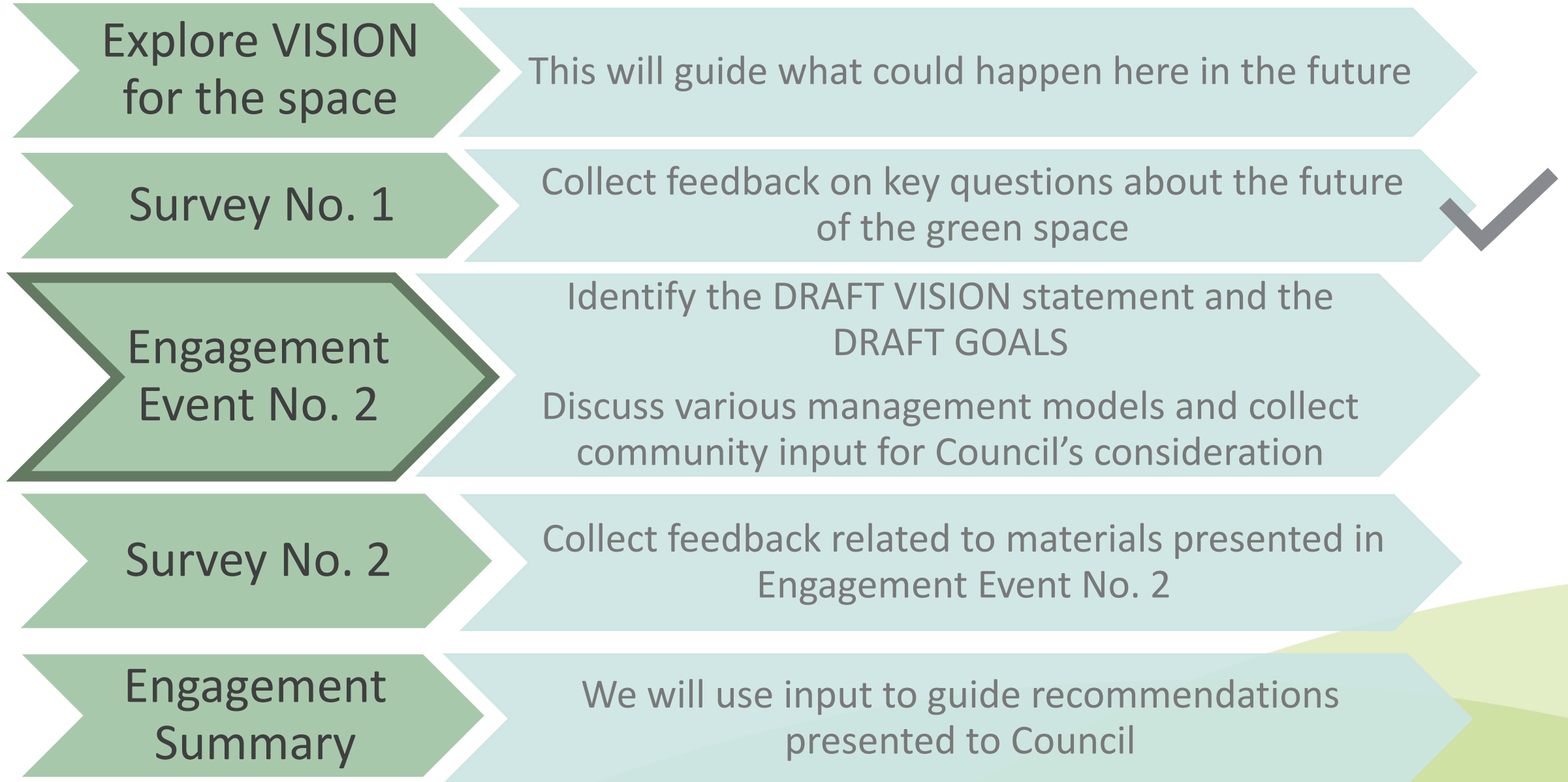
WE ARE HERE!
2022



Saanich Council
directed staff to
proceed with public
consultation



Current Phase



Next Phases

Year 2

Draft concept plan will be developed to reflect the vision and goals

Year 3

Final concept plan presented to Council

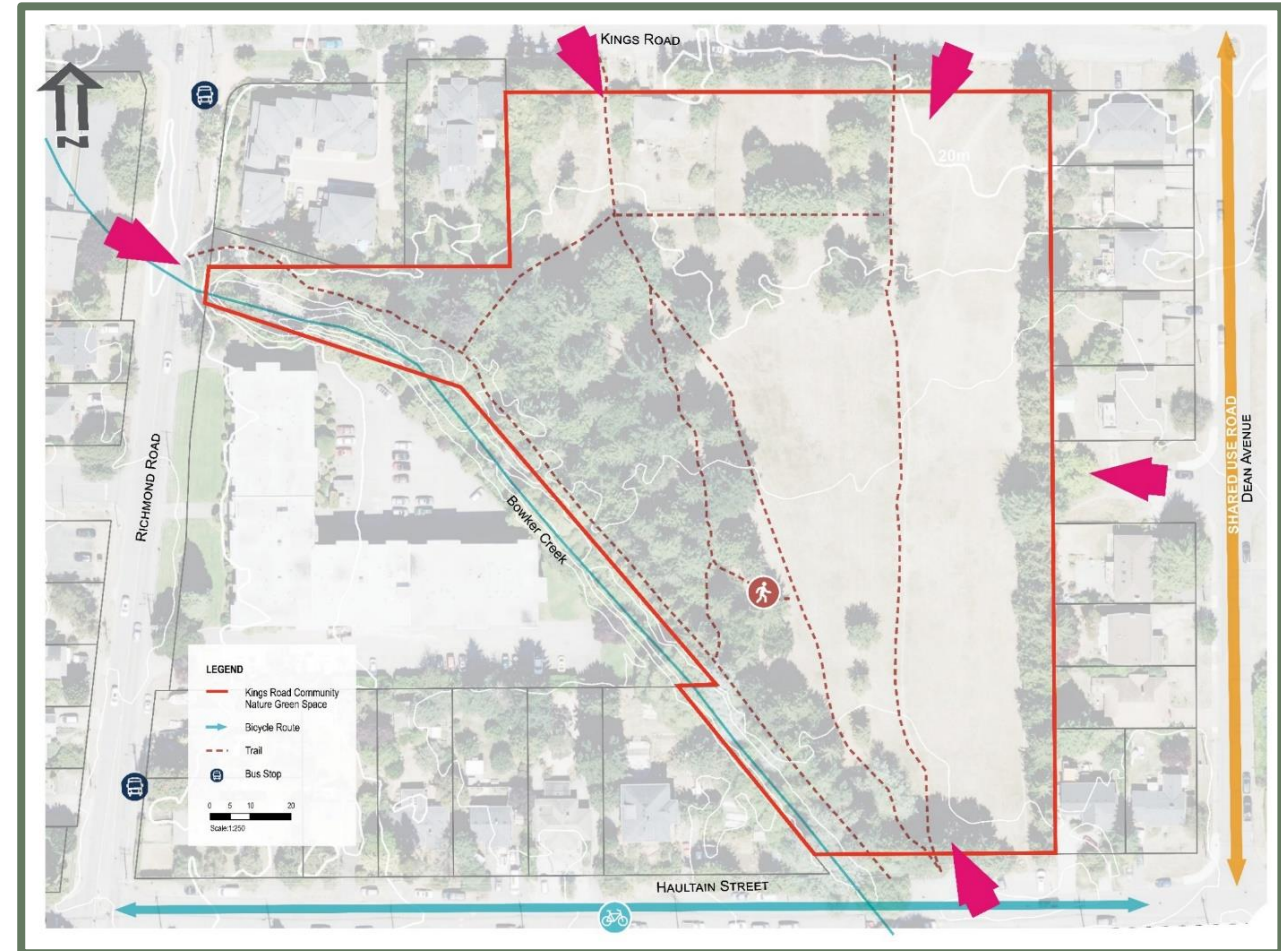
Year 4 &
Onwards

Concept plan implementation begins

Site Conditions

Opportunities & Constraints

- Large flat open spaces
- Central location in community
- Existing natural assets (Bowker Creek, Unique trees)
- Back-up emergency helicopter landing site will continue for Royal Jubilee Hospital's use
- Addressing stormwater management and/or the Bowker Creek Blueprint initiative will result in loss of some existing trees



What We Heard: Engagement #1

Held November 15, 2022

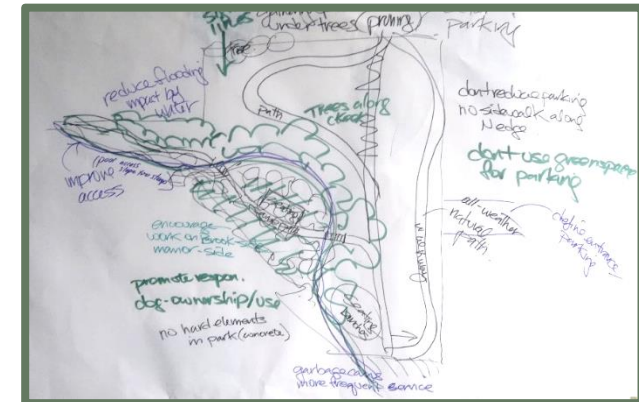
- Public Session included discussion, design charrette, and visioning process
- The event was about visioning and aimed to promote creative thinking and dreaming BIG!



50 people attended in-person session



73 responses to the online survey



What We've Heard

Themes	Support or Strongly Support
Restore, naturalize, and increase biodiversity	93%
Restore Bowker Creek in its existing location	63%
Restore and further enhance Bowker Creek by moving it further into the park	53%
Maintain the open space for informal recreation	75%
Continue to welcome dogs	70%
Improve stormwater management and mitigate flooding	91%

What We've Heard

Themes	Support or Strongly Support
Provide safe, accessible, all-weather paths for people of all ages and abilities	85%
Accommodate nature-based play and outdoor education	79%
Preserve and enhance the urban forest through retention of existing trees and planting more trees	93%
Allow access to Bowker Creek for educational opportunities	78%
I would like to see the space remain exactly as it is	30%

Additional Comments

Examples of additional comments received include:

- Consider First Nations
- Limit paving / wheelchair accessible
- Native plants
- Not just big dog park / keep dogs out of wildlife
- Rename the park
- Connect to hospital
- Must remove some trees
- Community gardens
- Zone P-4N
- Fire hazard
- Define informal recreation and nature-based play

Draft Vision Statement presented in Survey:

Kings Community Nature Space is a refuge for both people and wildlife. Bowker Creek contributes to the park's vibrant natural environment and supports wildlife biodiversity. Visitors to the space enjoy accessible paths, and benefit from the connection to nature, socialization, informal recreation, and the beauty of natural areas and open space.

59% of survey respondents said this captures the long-term vision. 33% suggested its "almost there but needs a bit of work."

Revised Vision Statement



The (name to be determined) is a peaceful park that benefits people and the environment. The park includes Bowker Creek, native plants and trees, open spaces, accessible trails, and informal recreation spaces that holistically support wildlife habitat, robust stormwater management, and opportunities for people to connect with each other and nature.

Group Break Out Session: VISION

How could this DRAFT Vision statement be further improved?

- **What is missing?**
 - **What is your favourite component of the DRAFT Vision?**
- 

Draft Goals

Goals are needed to support the long-term Vision...

Goal 1: Improve Bowker Creek Health & Stormwater Management

- Work with Bowker Creek Initiative and stormwater management experts to improve the creek and provide flood mitigation
- Prioritize minimizing impact to existing trees and wildlife
- Replace every tree lost

Goal 2: Improve Ecosystem Functions and Wildlife Habitat

- Complete creek restoration with minimal temporary impact to wildlife
- Create functional wildlife habitat with appropriate native trees, shrubs and herbs
- Protect most sensitive wildlife habitat areas from intrusion by people and dogs

Goal 3: Increase Urban Forest and Help Slow Climate Change

- Plant more trees to contribute to urban tree-cover and provide shade for park users

Draft Goals Cont.

Goal 4: Provide Informal Recreation


- Preserve ample open space for all people to share and enjoy
- Continue to welcome dogs with responsible owners
- Keep some areas under trees open (vs native understory) for people and dogs to enjoy
- Provide seating at strategic locations for resting, socializing, and viewing

Goal 5: Provide Access To Nature

- Create opportunities for visitors to experience nature in a respectful manner, e.g. pathways, boardwalks, sitting / viewing areas

Draft Goals Cont.

Goal 6: Ensure Connections

- Create a safe, accessible pathway system to accommodate visitors from the hospital and the larger community. Minimize hard-surfacing
 - Explore possibility of improving pathway to hospital that is on land not owned by Saanich.
 - Accommodate the Bowker Creek Greenway
- 

Group Break Out Session: GOALS



- **What is missing from these DRAFT goals?**
- **How could they be further improved?**
- **Of the goals listed, which do you think is most important?**

Park Management Models

	Community Involvement
Municipal (Saanich Parks manages the park)	Low
Community-based Group in Partnership with Municipality (eg. 'Friends of', Stewardship, or Advisory Group)	Low - Medium
Partial Management Model (Municipal Operations in collaboration with not-for profit for focused area)	Medium - High
Not-for-Profit Society (e.g. Swan Lake Christmas Hill Nature Sanctuary)	Very High


OPTION 1: Municipal

The Municipality owns, operates and maintains the park. Site changes and improvements like buildings (nature houses) are approved by, and paid for by, the Municipality.

Pros

- Standards of park management and maintenance levels applied
- Access to municipal funds
- Responsive to community

Cons

- Limited grant availability
 - Work scheduled in context of 170+ Saanich parks
- 

OPTION 2:

Community-Based Group in Partnership with District

The Municipality owns, operates, and maintains the park. Site changes and improvements like buildings are approved by, and paid for, by the Municipality. The Community group supports additional community initiatives such as invasive plant removals and mutually agreed-upon projects.

Pros

- Municipality maintains standard levels of service and maintenance
- Community may fundraise when approved by Saanich
- Increased communication and liaison with Saanich
- Flexible – group may dissolve if / when desired

Cons

- Projects must comply with municipal safety and liability standards and meet Parks Department requirements


OPTION 3: Partial Management Model

The Municipality owns, operates and maintains the park. A Not-For-Profit Society manages specific site features (e.g. Nature House) according to an annual agreement with Saanich that must be adhered to.

Pros

- Benefit of both the municipality and the Not-For-Profit
- Community and volunteer resources tailored to desired outcomes
- Enhanced and targeted program delivery (e.g. education)

Cons

- Requires long-term community commitment and involvement
 - Not-For-Profit responsible for own financing and administration
 - Potential for volunteer burnout
- 

OPTION 4: Not-for-Profit Society

The Municipality owns the park. The Society provides and pays for park management including operations and maintenance according to the terms and objectives outlined in an agreement with the Municipality. This agreement is negotiated at the outset and reviewed annually.


Pros

- Significant grant opportunities
- May raise funds through donations
- Highly responsive to site-specific requests and maintenance needs
- Efficient at delivery of educational programs
- Public participation (volunteering)

Cons

- Requires long-term high community commitment and involvement
- Requires funding independent of Saanich
- Potential for volunteer burnout

Group Break Out Session: Management Models

- **Which management model would you be most supportive of? Why?**
 - **Which management model would you be least supportive of? What are your main concerns?**
- 

A photograph of a stone retaining wall in a wooded area. The wall is constructed from large, grey, rectangular stones and is situated on a slope. The background shows a dense forest with green foliage and trees. The foreground is filled with various green plants and grasses. The word "Questions?" is overlaid in the center of the image in a large, bold, black font.

Questions?



Closing and Next Steps

- All information will be summarized and shared on the project page at **[Saanich.ca/kings](https://saanich.ca/kings)**



Thank you



Contact us at parks@saanich.ca or 250-475-5522 with any other feedback or questions.



saanich.ca/kings