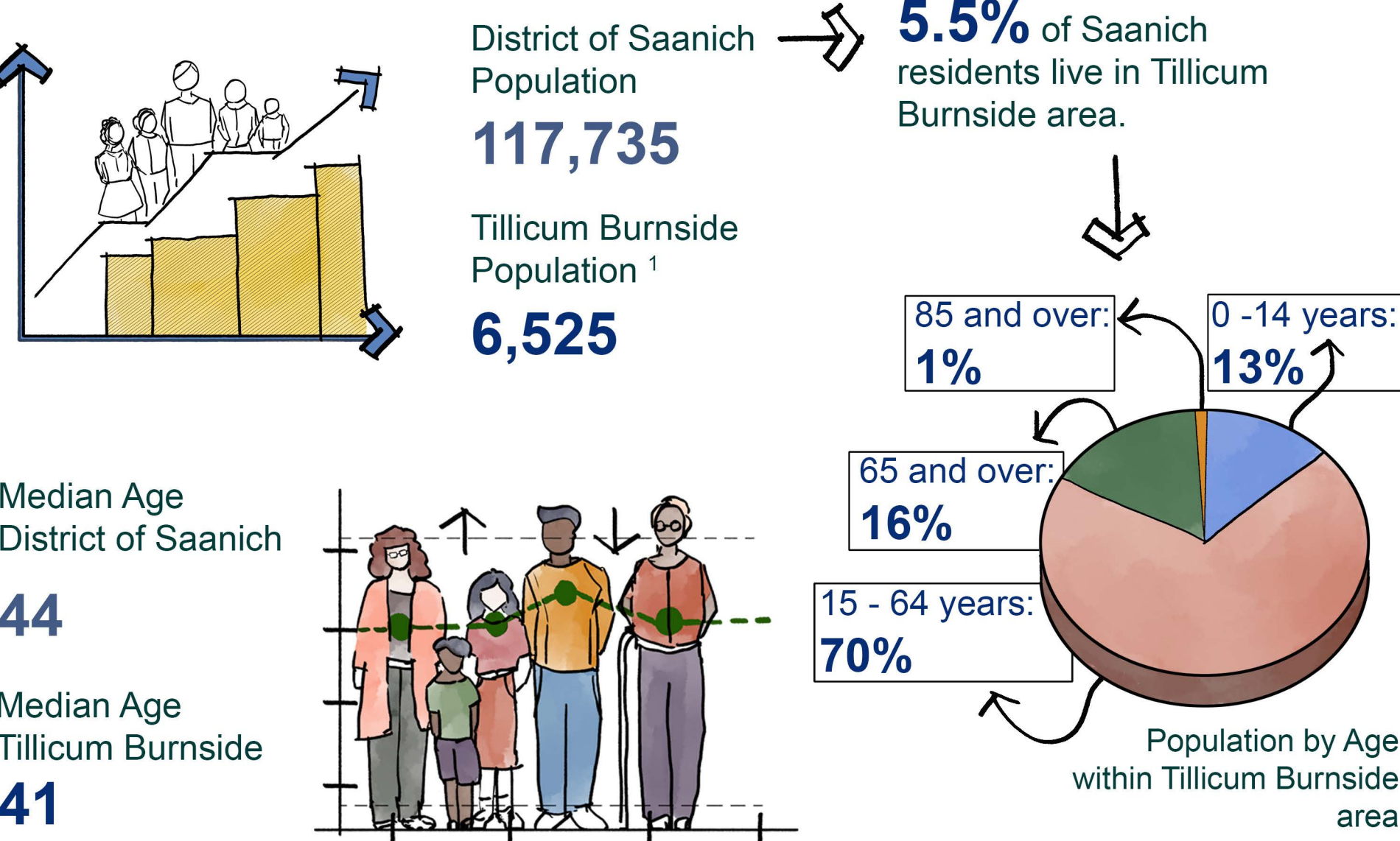
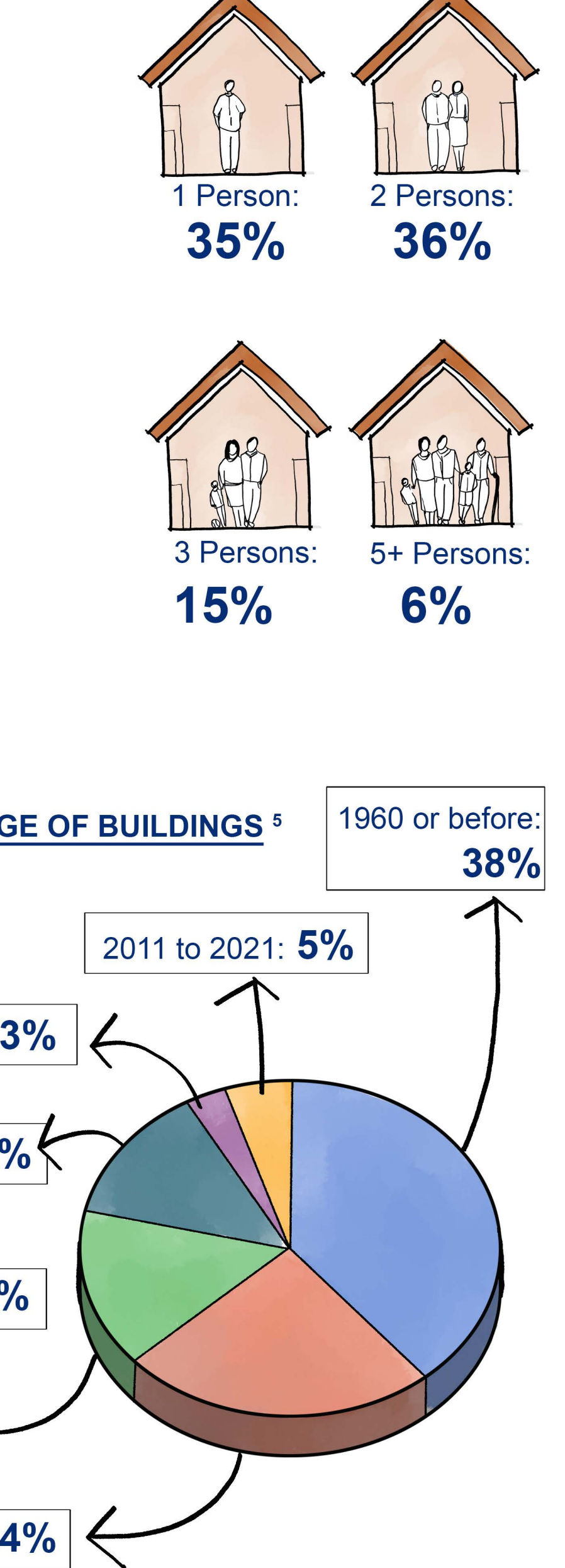
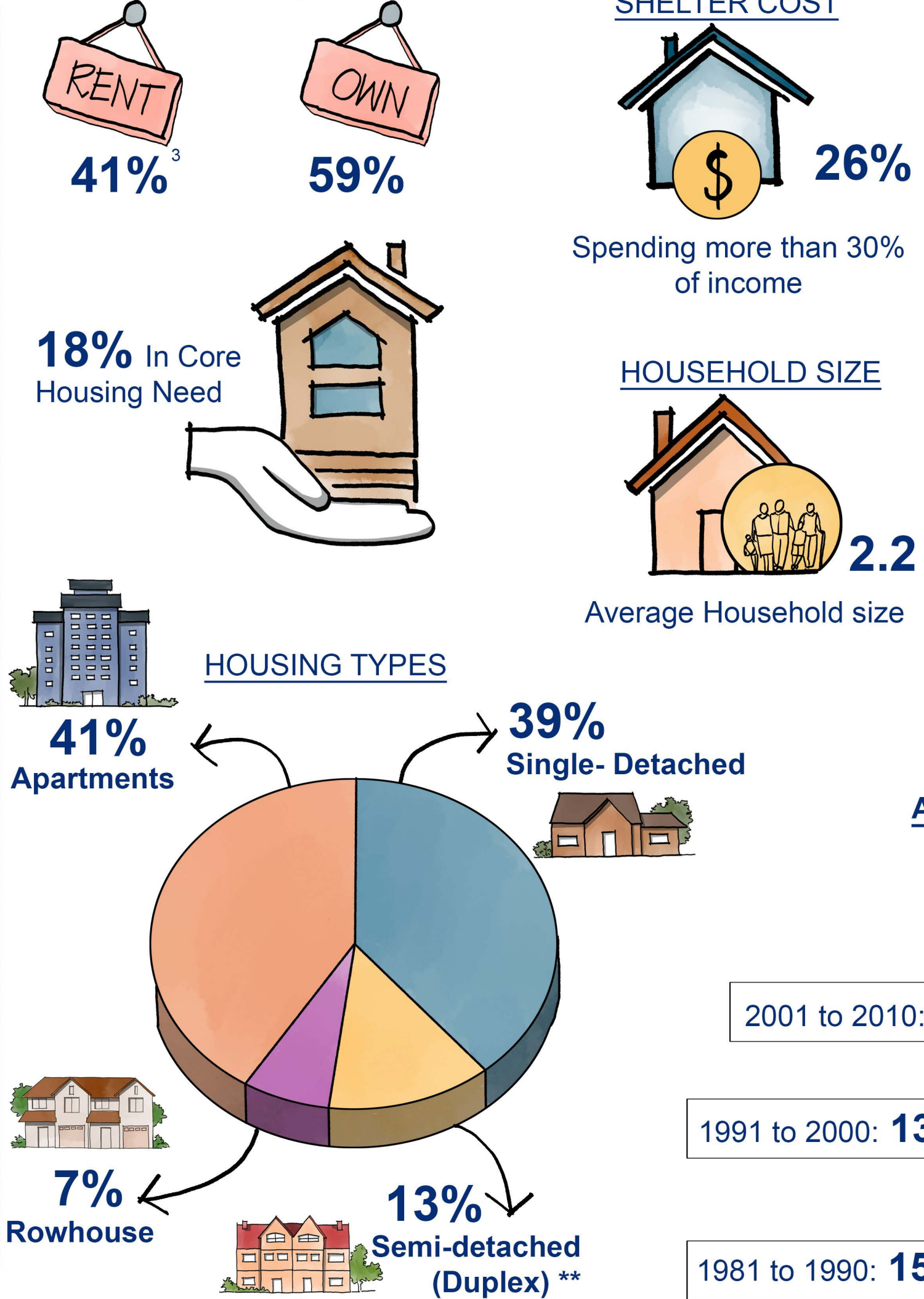


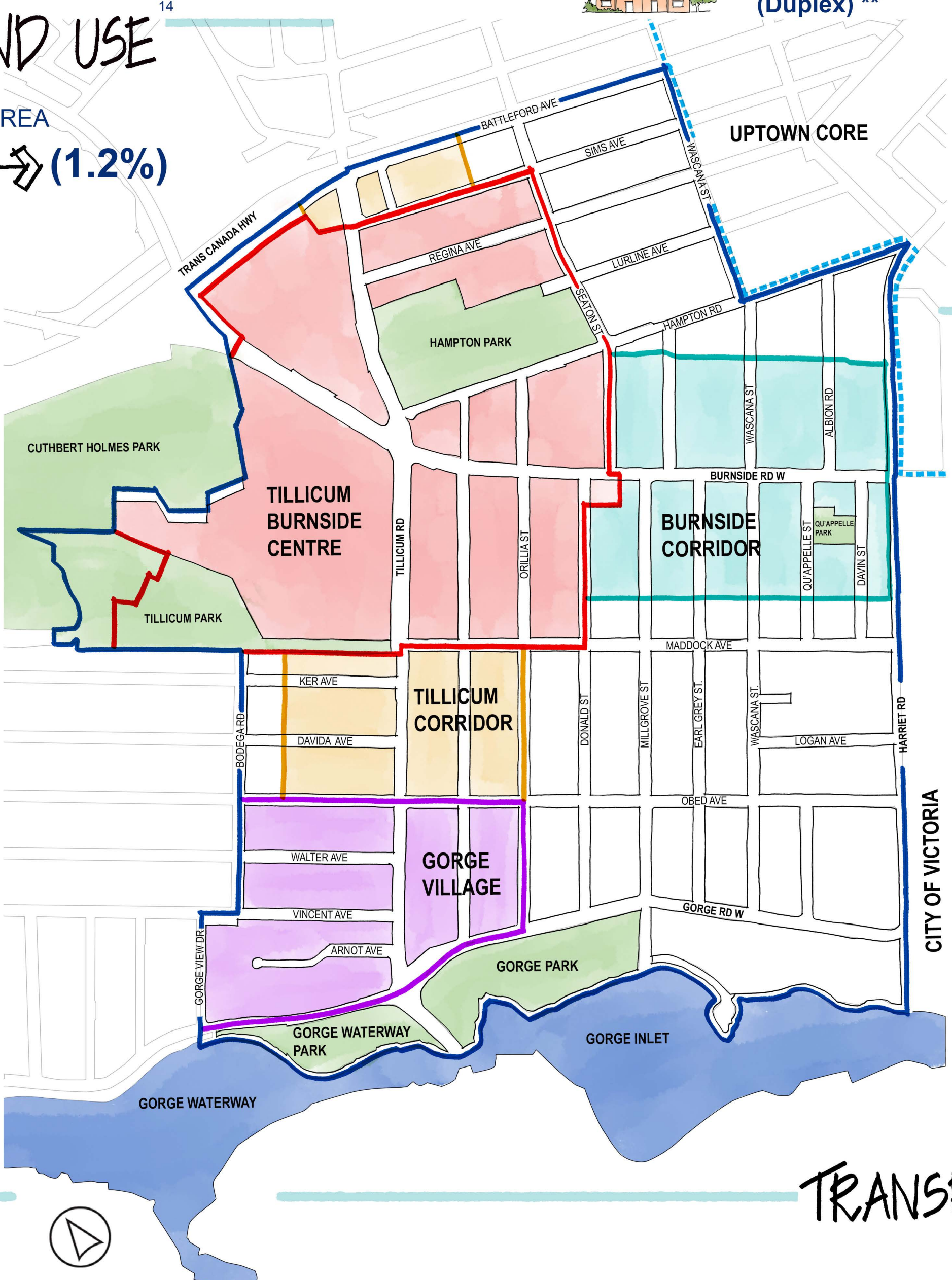
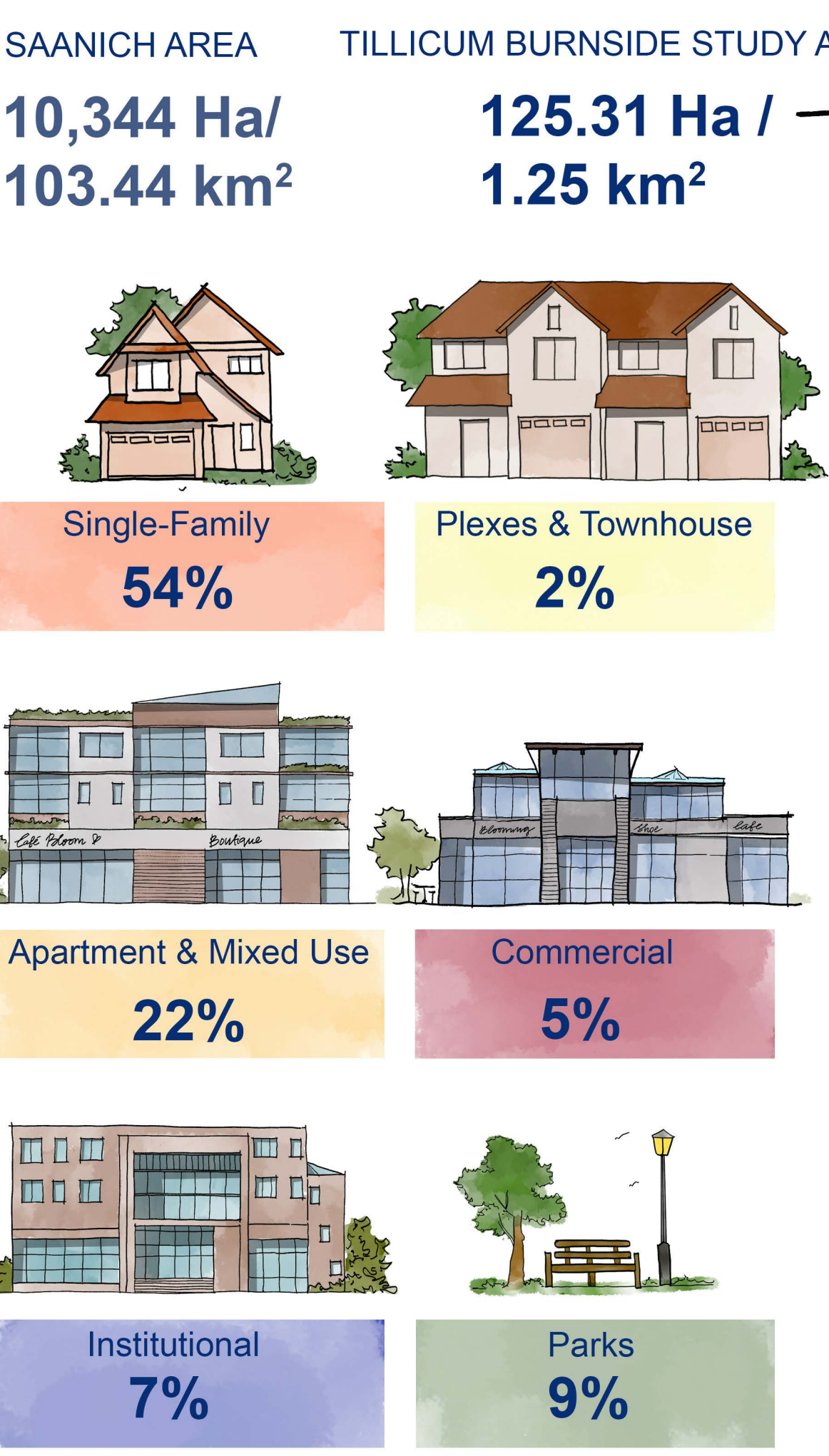
GENERAL STATISTICS



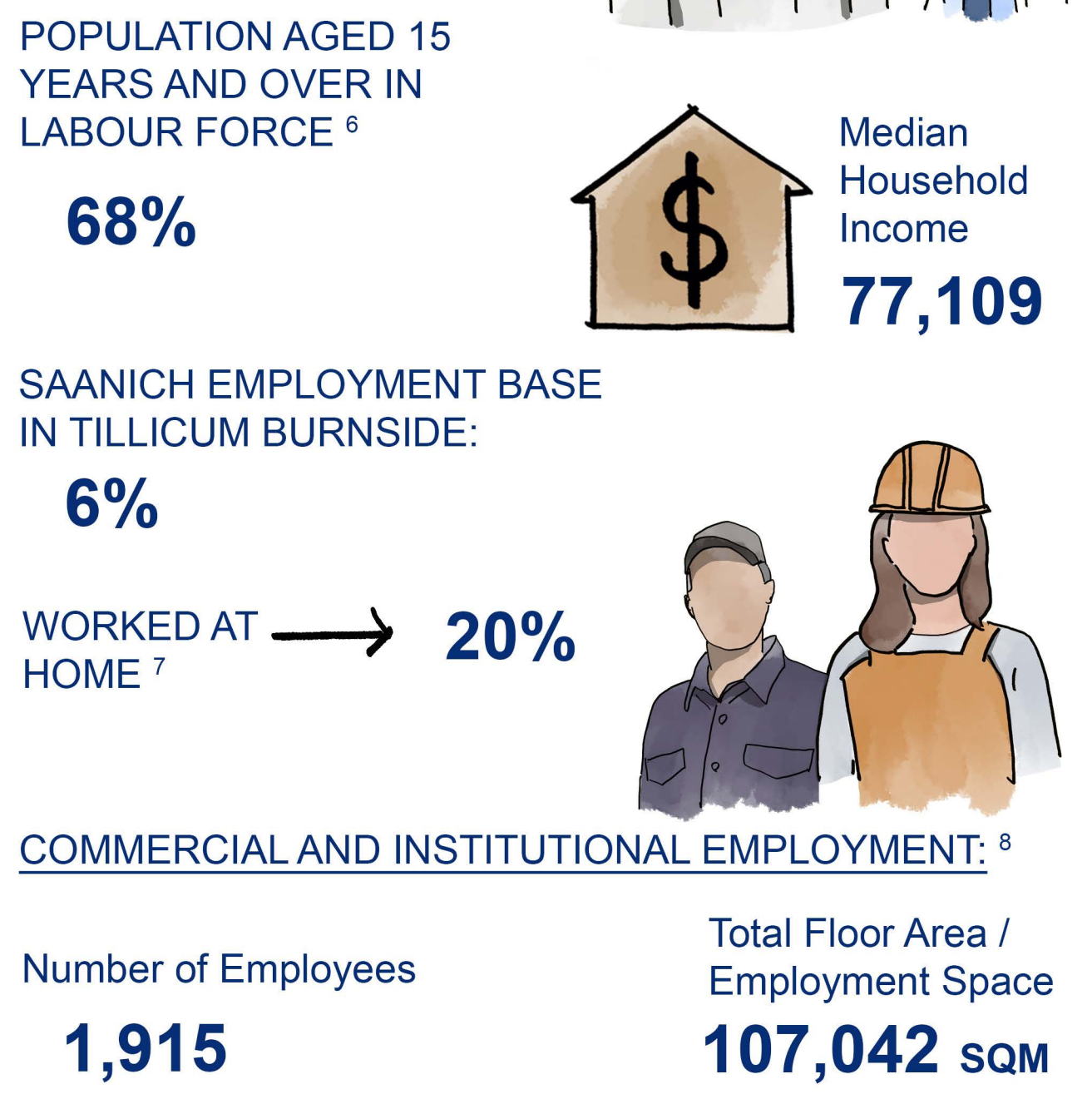
HOUSING



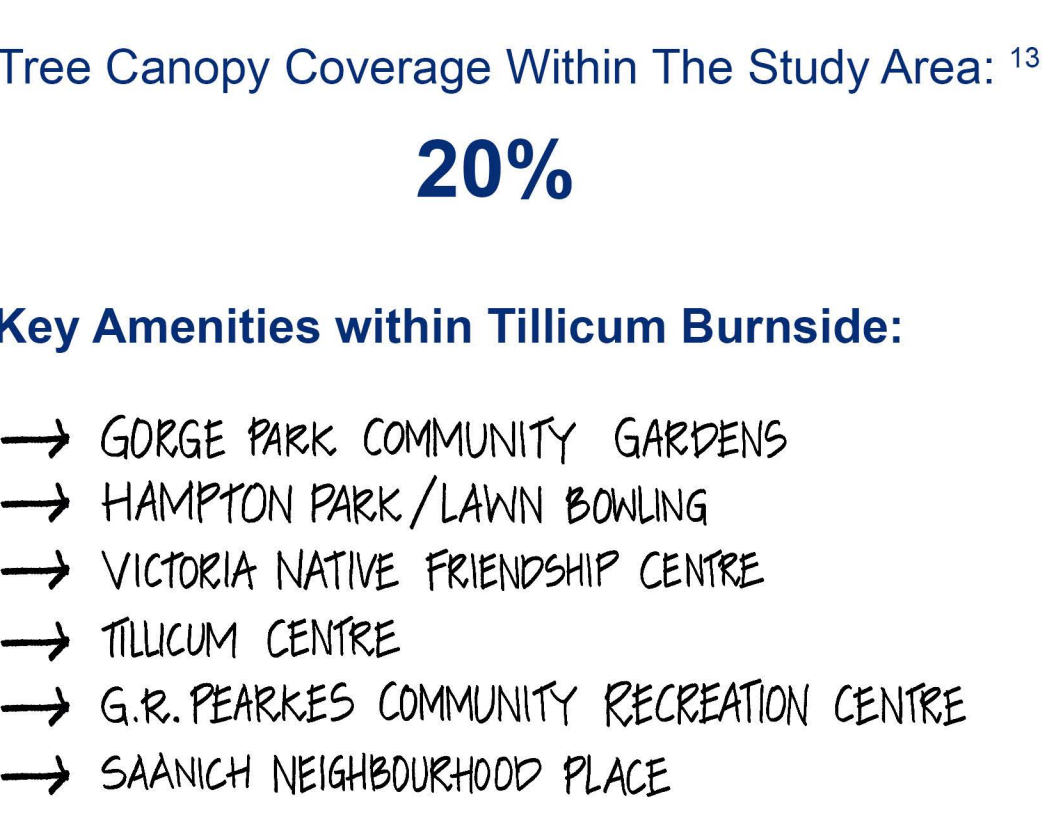
GENERAL LAND USE



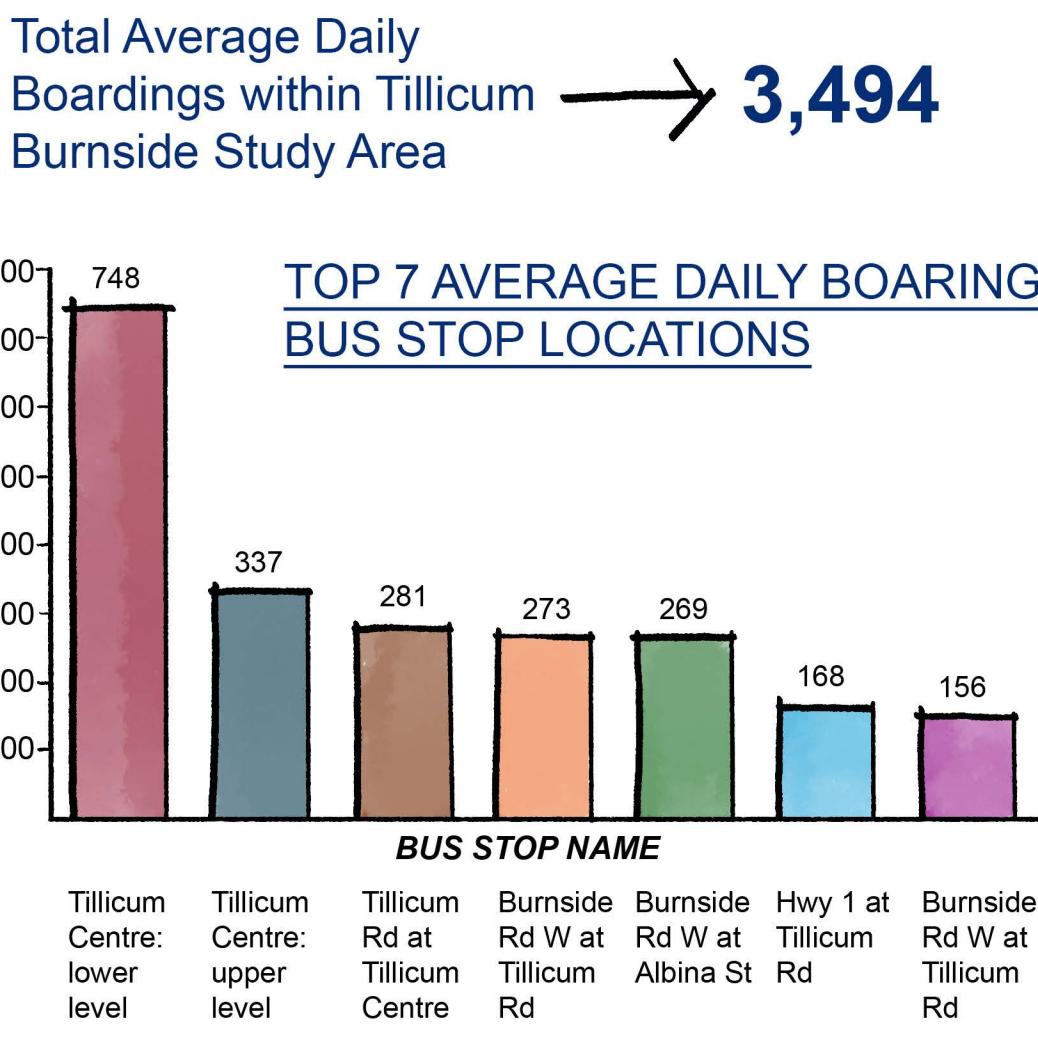
ECONOMY



PARKS AND AMENITIES



PUBLIC TRANSIT RIDERSHIP ¹¹

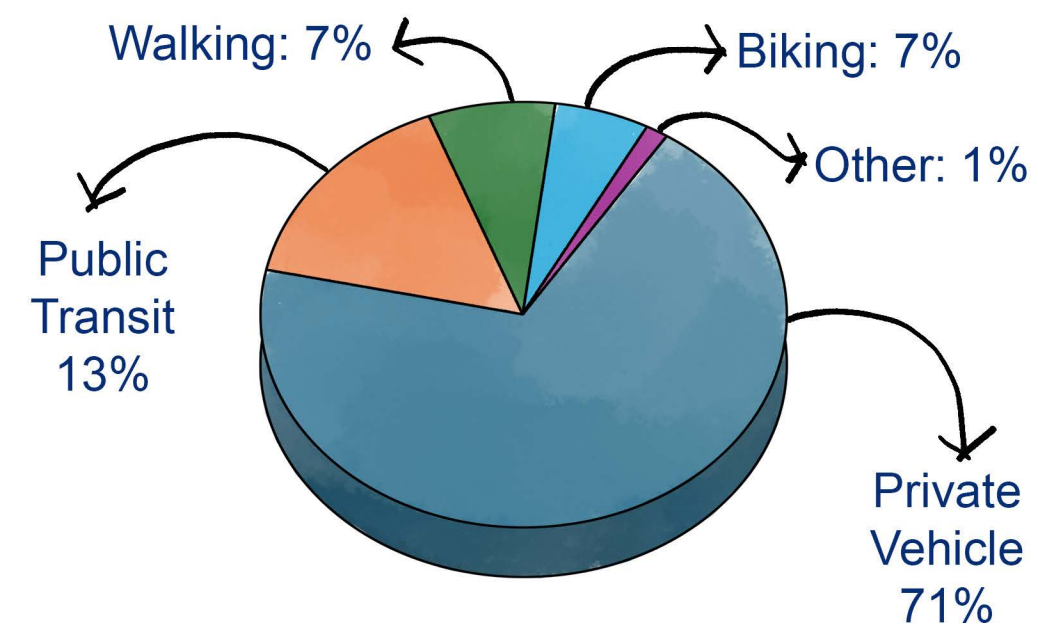


PUBLIC CHARGING STATIONS ¹²

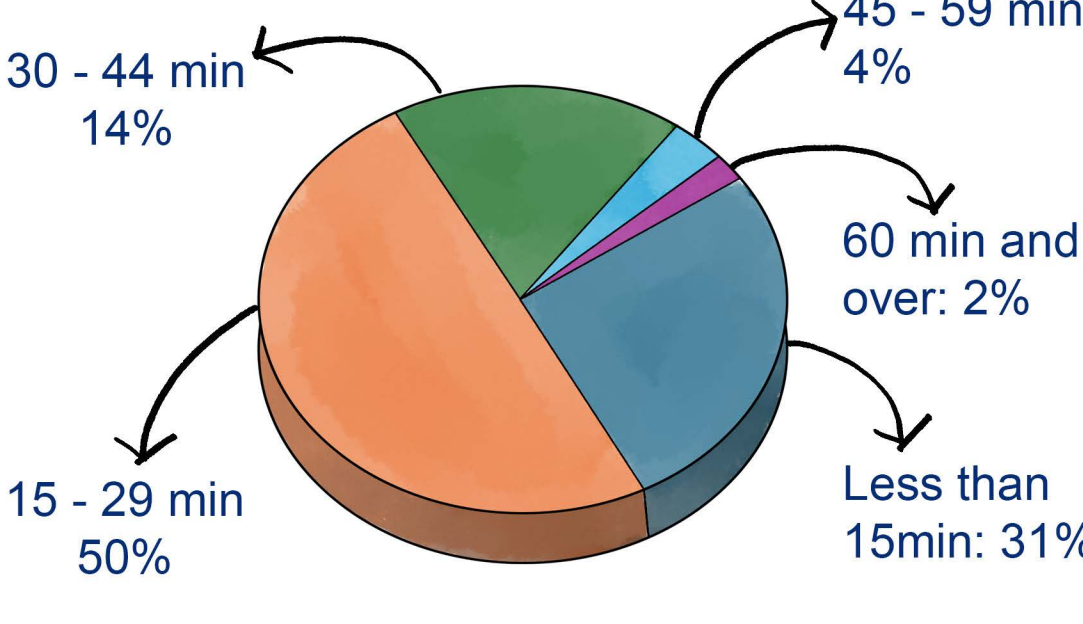


TRANSPORTATION

TRAVEL MODES TO WORK



TRAVEL TIME ¹⁰



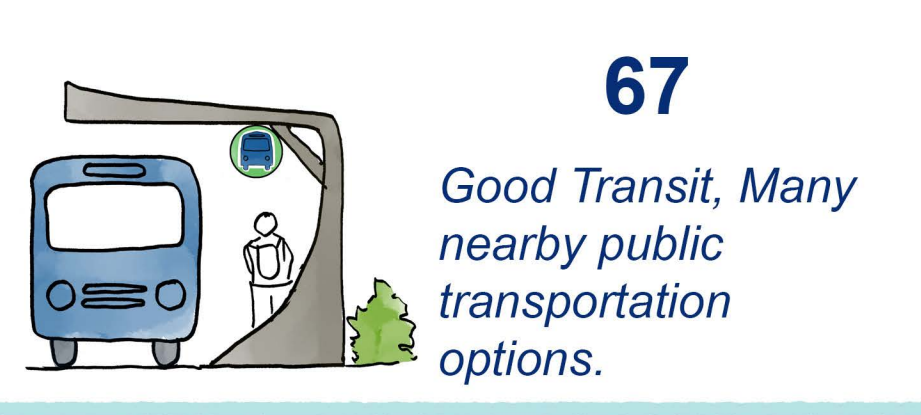
WALK SCORE AVERAGE: ⁹



BIKE SCORE AVERAGE:



TRANSIT SCORE AVERAGE:



1 - Stat Canada data, census of population 2021
2 - Census, 2021
3 - Census 2021 Dissemination areas. Private household by tenure - 25% sample data
4 - Census 2021 Dissemination areas
5 - Census 2021, Occupied private dwellings by period of construction - 25% sample data
6 - Census 2021 Labour Force Status (Aggregate data includes 2 overlapping Census DA boundaries)
7 - Census 2021 Place of Work (Aggregate data includes 2 overlapping Census DA Boundaries)
8 - Land Capacity Model (Residential and ICI Methodology, Licker June 2024)
9 - Data based on Walkscore.com
10 - 2021 Census: Travel time indicator refers to "This quality of employment indicator provides insights into the usual time spent by Canadians getting to their place of work each day (one-way), with a focus on those whose commute is 60 minutes or longer..
11 - Based on data provided by BC Transit
12 - Data from Plugshare
13 - Diamond Head Consulting data
14 - Saanich GIS data
** 50% Re-allocation for Apartment or flat in a duplex.