

Current State

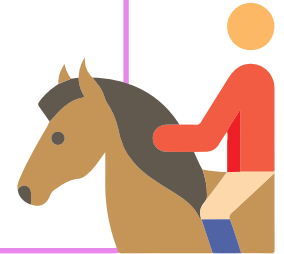
Dogs

- No designated dog off-leash trails or areas in Saanich
- Bylaw includes on-leash restricted areas and trails, restricted areas and trails where no dogs are allowed, and seasonal restrictions

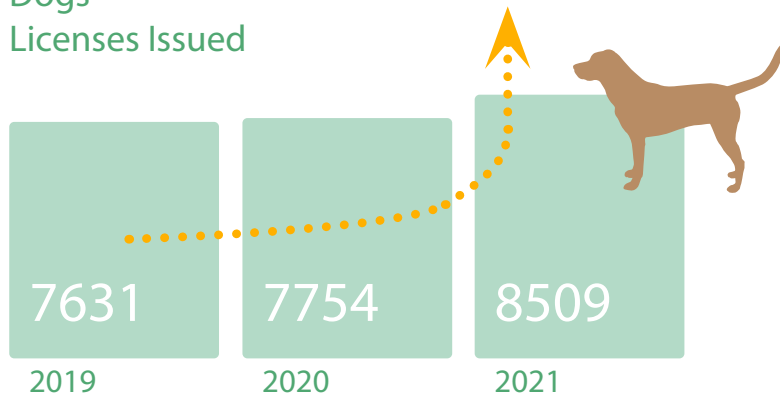


Horses

- No designated bridle trails for horses in Saanich Parks but there are bridle trails in CRD Parks located in Saanich
- Horse riders occasionally use trails around Blenkinsop Valley and rural Saanich



Dogs Licenses Issued



Pop-Up Dog Parks

- Fowler Park
- Hyacinth Park
- Gorge Park
- Rudd Park
- Cadboro Gyro Park



Pop-Up Survey Highlights

- About 80% of respondents would utilize one of the dog parks if it became permanent
- About 40% walk their dogs off-leash in a Saanich park daily
- Top concerns: owners not controlling their dogs, aggressive dogs and cleanliness

Strategy Purpose



“...allow Saanich and its park users to achieve positive desired relationships between all people (pet owners and non-pet owners), pets and the environment (parks and beaches)”

Strategy Goals



Develop a framework that balances community needs and environmental protection.



Define policy elements that will be required to improve the compliance and enforcement of pet related bylaws in parks.



Provide opportunities for residents and stakeholders to understand, engage with, and provide feedback on the project.



Develop an implementation guide.



Establish a monitoring and reporting guide to evaluate the success of the shared use framework.

Engagement Overview

★ WE ARE HERE!

..... SPRING 2022 FALL 2022 - WINTER 2023 SPRING 2023 ➔



Exploring Park Uses +
Community Vision



Public Survey



Virtual Community
Dialogue Sessions



Kitchen Table Workbooks

Drafting the Strategy +
Validating Needs



Virtual Stakeholder
Workshops



Public Open House



Public Online Survey

Finalizing the People,
Pets, Parks Strategy



Public Open House

Strategy Priorities

What needs to be considered as part of this Strategy?

Protection of
natural areas
and sensitive
ecosystems

41% selected this
in the public survey
and 43% in the
representative survey

Safety for
people

36% selected this
in the public survey
and 77% in the
representative survey

Safety for dogs/
pets

40% selected this
in the public survey
and 38% in the
representative survey

Location and
distribution of
off-leash areas
for dogs

35% selected this
in the public survey
and 40% in the
representative survey

Sharing Our Parks

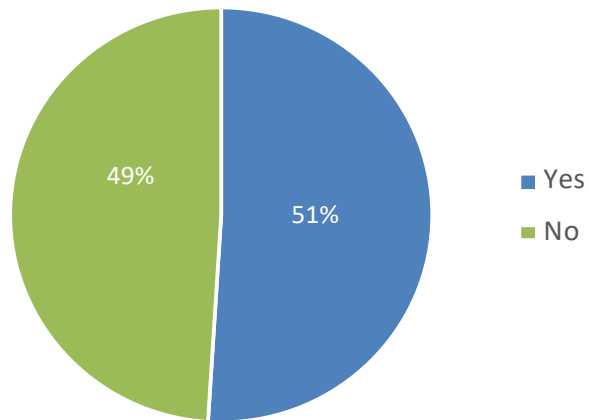
What needs to be considered as part of this Strategy?

- **Variety of Off-Leash Areas**
Enclosed/fenced areas, trails, etc.
- **Inclusivity**
Recognition of different needs and perspectives (all of ways people use parks)
- **Communication**
Signage and information on where pets are welcome, how to train dogs, protection of natural areas, etc.
- **Compliance**
Bylaw enforcement and ensuring impact of regulation
- **Park Features for Dogs**
Top features in survey included fenced off-leash areas for running and play and walking path/trail loops

Sharing Our Parks

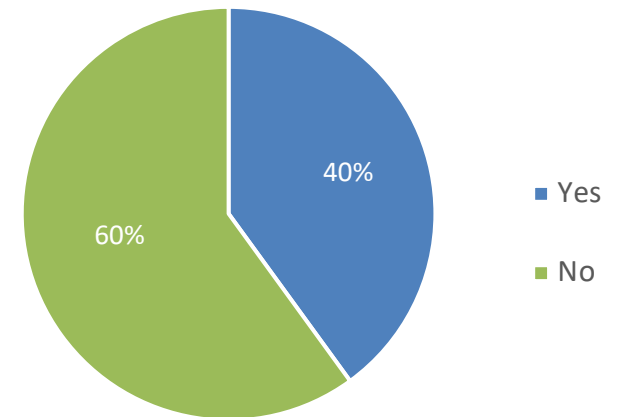
Current Park Experiences

Have you ever had a negative experience or conflict with an off-leash dog?



(from representative survey)

Are there parks you avoid because of the high number of off-leash dogs?



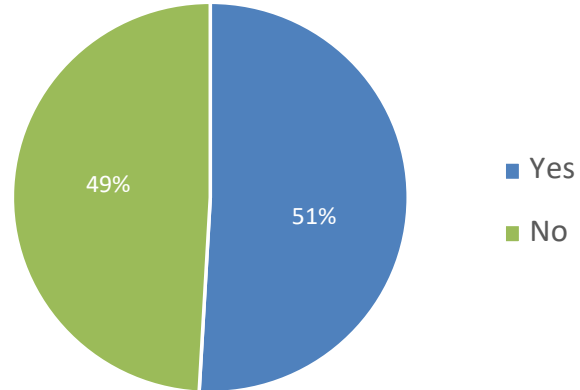
(from public survey)

- From the representative survey, there were high levels of agreement for statements related to the **coexistence, comfort and safety of people and dogs**
- 85% of representative (statistically valid) phone survey respondents agree or strongly agree that **“dogs are a welcome part of the community”**

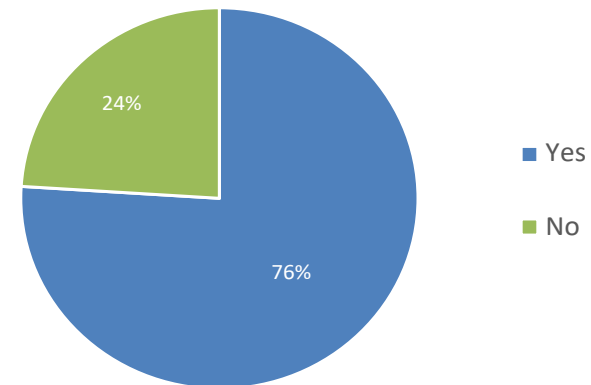
Sharing Our Parks

Current Park Experiences

Public survey participants were almost equally divided on whether they would support having a park where no dogs were allowed.



The majority (76%) of representative survey respondents agree that specific areas where dogs are not allowed off-leash will help reduce conflicts.



Next Steps

Visit the project website for more information and to stay up to date on future engagement opportunities in the new year:

<https://www.saanich.ca/dogs>